



f. britsch

everything. always. quick.

YOUR NEEDS – OUR PASSION
WITH US YOU GET ALL THE TOOLS THAT YOU
NEED FOR THE TURNED PARTS INDUSTRY



In brief – key information about f.britsch

Founded by Friedrich Britsch in 1976 as a trading company for supplying turning shops, f.britsch is now a continually expanding, modern company, which is a reliable supplier and trusted trading partner for turning shops across the whole of Germany and throughout the world.

With one of the largest stocks in Germany and with our in-house modification and production workshop in Germany, we ensure that no customer requirement remains unfulfilled.

You can also rely on us in terms of quality: our entire product range comes almost exclusively from well-known manufacturers in Germany and Switzerland. In addition, over 50 highly-trained and service-oriented staff make sure that almost every single order is delivered within 24 hours, if we have the parts on stock.

When we say „everything“, we mean just that...

...particularly when it comes to precision tools: e.g.

- Dead length collets - 100 Series or F-type,
- Draw-in collets - 300 Series or W-type,
- Hydromat collets - HW-type,
- Multi-spindle collets - all types,
- Tool-holding collets - all ER series,
- Clamping sleeves,
- Clamping chucks (and other clamping technology and clamping elements),
- Guide bushes,
- Cutting, turning, and knurling tools,
- Different kinds of tool holders,
- BIMU insert systems,
- Ifanger MicroTurn systems,
- Grinding wheels – whatever you need for turning, we have it in stock.

This also applies to machines and machine accessories such as drill grinding machines, bar chamfering machines, grinding and lapping machines.

Over 34,000 products permanently in stock!

If it is not a perfect fit, we will make it fit according to your designs and specifications. Our in-house grinding and EDM service makes this possible – always working with the utmost precision and according to strict quality standards (DIN EN ISO 9001:2008).

And if you still don't find what you're looking for in our practically unlimited stock - because none of the commercially available products meets your needs - then we can produce a custom design exclusively for you.

The following is only an extract from our product portfolio on the subject collets and clamping tools. Our stock goes beyond collets and clamping tools, it covers all that you can find in the application of your lathes.

f.britsch – absolutely **everything** you need for turning!

TABLE OF CONTENTS

f. britsch

Contents

48 HOURS GRINDING- AND ELECTRIC DISCHARGE MACHINING-SERVICE.....	4	COLLET STOPS.....	24-26
DIFFERENT TYPES OF DEAD LENGTH COLLETS.....	5	COLLETS, FEED COLLETS; PICK-UP COLLETS FOR AUTOMATIC MULTI-SPINDLE LATHES SERIES 9000.....	27-31
RUNOUT ACCURACY TOLERANCES IN ACCORDANCE TO DIN 6341.....	6	CLAMPING HEADS.....	32
DEAD LENGTH COLLETS SERIES 100 / F-TYPE.....	7-8	ER-COLLETS SERIES 400.....	33
DEAD LENGTH COLLETS WITH CARBIDE INSERT SERIES 100 / F-TYPE.....	9	ER-RIGID TAPPING COLLETS SERIES 400.....	34
CHUCK LEVERS.....	9	PCM TAPPING COLLETS WITH AXIAL COMPENSATION.....	35
KROKO COLLETS.....	10	ER-FLOATING REAMER COLLETS SERIES 400.....	36
COLLETS WITH POLYMER INSERT.....	11	ER-COLLETS SEALED SERIES 400.....	37
LONGSTAR.....	12-13	FEED COLLETS SERIES 200.....	38
GHEZZI FIX MODULAR COLLET CHUCK SYSTEM.....	14	ADJUSTABLE FEED COLLETS.....	39
WIFEX COLLET FOR INTERNAL CLAMPING.....	15	BAR FEED COLLETS FOR BAR LOADERS.....	40
ADJUSTABLE GUIDE BUSHES WITH CARBIDE INSERT.....	16	BAR FEED COLLETS FOR INTERNAL GRIPPING.....	41
ADJUSTABLE GUIDE BUSHES WITH EXTENDED CARBIDE INSERT.....	17	LONGLIFE BAR FEED COLLETS.....	42
WAVE - GUIDE BUSHES.....	18	TURBO-BAR FEED COLLETS.....	43
GUIDE BUSHES WITH POLYMER INSERT.....	19	BAR FEED COLLETS IEMCA.....	44-45
POLYMER - GUIDE BUSHES.....	20	BAR FEED COLLETS LNS TRYTON AND CUCCHI.....	46
DRAW-IN COLLETS SERIES 300 / W-TYPE.....	21-22	REVOLVING ENDS FOR BAR LOADERS.....	47-50
DRAW-IN COLLETS HYDROMAT.....	23		

48 HOURS GRINDING- AND ELECTRIC DISCHARGE MACHINING- SERVICE



If it is not a perfect fit, we will make it fit according to your designs and specifications. Our in-house grinding and EDM service (electric discharge machining service) makes this possible – always working with the utmost precision and according to strict quality standards (DIN EN ISO 9001:2008). We can quickly grind and EDM a wide range of collets and guide bushes according to your specifications and requirements with our modern technologies within max. 48 hours.

Try us!



DIFFERENT TYPES OF DEAD LENGTH COLLETS

f. britsch

Radial grooves are standard starting from \varnothing 8,5



Smooth bore is standard up to \varnothing 8,0



Axial and radial grooves



Supergrip



Carbide coating



Extended nose



Carbide insert



KROKO



Polymer insert



LONGSTAR



GHEZZI-FIX



WIFEX collet



Collet for internal clamping EXP173



Slits and slots siliconised or vulcanised



Customized profiles within max. 48 hours



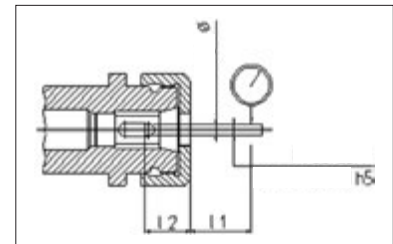
RUNOUT ACCURACY TOLERANCES IN ACCORDANCE TO DIN 6341

f. britsch

RUNOUT ACCURACY DEVIATIONS

for collets

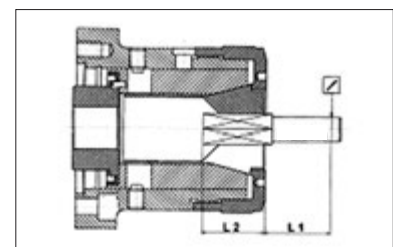
Bore Ø	L ₁	L ₂	DIN 6341	RUNOUT ACCURACY Ultra-precision
0,5 - 1	3	3 - 5	0,015	0,005
1 - 1,6	6	5 - 8	0,02	0,01
1,6 - 3	10	8 - 12	0,02	0,01
3 - 6	16	12 - 18	0,02	0,01
6 - 10	25	18 - 24	0,02	0,01
10 - 18	40	24 - 32	0,03	0,015



RUNOUT ACCURACY DEVIATIONS for collets with profiles (hexagon, square...)

At higher runout accuracy, the profile has to be eroded!

Profile widths	L ₁	L ₂	Max. runout accuracy deviations
0,5 - 1	3	3 - 5	0,12
1 - 1,6	6	5 - 8	0,12
1,6 - 3	10	8 - 12	0,12
3 - 6	16	12 - 18	0,12
6 - 10	25	18 - 24	0,15
10 - 18	40	24 - 32	0,2
18 - 24	50	32 - 48	0,2
24 - 30	60	48 - 60	0,2
30 - 50	80	60	0,2
50	100	60 - 70	0,2



DEAD LENGTH COLLETS

SERIES 100 / F-TYPE

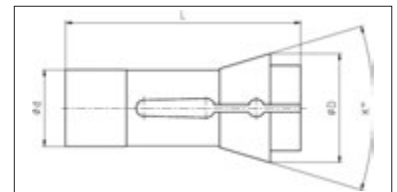
f. britsch



Standard version



Series 100 is also available as a collet with an extended nose



We also support you with collet sleeves!

Order No.		Ø d	Ø D	L	K	Maximum		
						Ø	Hexagon	Square
EF 4.5	76-76	4,5	6,75	17,25	30°	3,5	-	-
100 E	F6 76-599	6	10	30	30°	4,5	-	-
1010 E	F7 76-576	7	11	41	30°	5,0	-	-
1020 E	F7 76-66	7	10,7	26	30°	5,5	-	-
101 E	F8 76-577	8	12	42	32°	6,35	-	-
102 E		8	13,7	30	42°	6,0	-	-
103 E		8	14	35	30°	5,0-	-	-
109 E	F10 76-86	10	15,5	47,5	40°	8,0	7,0	5,5
110 E	F10 76-720	10	16	43	30°	8,0	-	-
111 E	F10 76-1178	10	16	46	40°	8,0	on request	
112 E	Gauthier 1H	11	18,7	41	44°	8,0	on request	
113 E		12	15,5	30,5	20°	10,0	on request	
114 E	F12 76-578	12	18	64	32°	10,0	-	-
1155 E	F12 76-78	12	18,1	44,5	30°	10,0	-	-
116 E	F13 76-357	13	19	63,5	32°	10,0	8,0	7,0
117 E	F14 76-98	14	18	46	26°	12,0	10,0	8,0
118 E		14	19,5	46	30°	10,5	on request	
120 E	F15 76-580	15	21	64	32°	13,0	11,0	9,0
E 120 uni deliverable with wave slots								
121 E	F15 76-358	15	22	47	40°	on request		
123 E	F16 76-104	16	22	55	30°	on request		
EF16-1076	1212 E	16	21	64	32°	13,0	10,0	8,0
125 E		17,5	22	51	30°	on request		
127 E	F18 76-85	18	25	67	30°	on request		
128 E	F18 76-579	18	24	64	32°	on request		
1299 E	F20 76-02	20	27.5	60	32°	on request		
136 E	F20 76-201	20	26	54	30°	16,0	14,0	10,0
137 E		20	27,5	69	30°	on request		

Customized profiles and further types on demand! Quickly available!

DEAD LENGTH COLLETS

SERIES 100 / F-TYPE

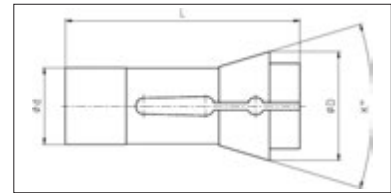
f. britsch



Standard version



Series 100 is also available as a collet with an extended nose



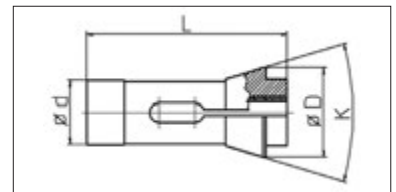
We also support you with collet sleeves!

Order No.		Ø d	Ø D	L	K	Maximum		
						Ø	Hexagon	Square
138 E	F20 76-87	20	28	67	32°	16,0	14,0	11,0
E 138 uni	deliverable with wave slots							
139 E	F22 76-88	22	28	67	26°	on request		
140 E	F22 76-71	22	30	55	30°	16,0	15,0	10,0
143 E	F25 76-581	25	31	54	30°	20,0	14,0	14,0
144 E	F25 76-91	25	34	65	30°	20,0	17,0	14,0
145 E	F25 76-64	25	35	77	32°	20,0	17,0	14,0
E 145 uni	deliverable with wave slots							
146 E	F26 76-90	26	32	67	26°	20,0	17,0	14,0
147 E	F27 76-22	27	38	72,7	30°	23,0	20,0	16,0
148 E	F28 76-93	28	38	70	30°	24,0	19,0	16,0
156 E		30	39,3	86,5	30°	on request		
157 E	F30 76-63	30	42	80	32°	26,0	22,0	18,0
EF 30 76-101	1446E	30	38	65	30°	26,0	22,0	17,0
161 E	F32 76-221	32	45	75	30°	28,0	24,0	19,0
165 E / 1497E	F34 76-77	34	44	80	32°	on request		
162 E	F35 76-67	35	43	70	30°	30,0	24,0	20,0
163 E	F35 76-94	35	48	80	30°	30,0	27,0	20,0
EF37 76-740	1536 E	37	47	92	32°	32,0	27,0	22,0
164 E	F38 76-72	38,1	49,3	108,7	30°	32,0	27,0	22,0
171 E	F42 76-99	42	55	94	30°	37,0	32,0	26,0
173 E	F48 76-81	48	60	94	30°	42,0	38,0	30,0
185 E	F66 76-59	66	84	110	30°	60,0	50,0	41,0
190 E		88	106	115	30°	on request		
193 E		90	107	130	30°	on request		
177 E/187 E	F58 17-355	58/72	70/90	94/142	30°/30°	on request		
188 E/194 E		84/95	100/116	142/200	30°/30°	on request		
195 E/196 E		105/112	125/138	172/120	30°/30°	on request		

Customized profiles and further types on demand! Quickly available!

DEAD LENGTH COLLETS WITH CARBIDE INSERT SERIES 100 / F-TYPE

f. britsch



Collets with carbide insert are also available with extended nose.

Order No.	Ø d	Ø D	L	K	Maximum Ø
HME 101	8	12	42	32	5,5
HME 109	10	15,5	47,5	20	6,0
HME 111	10	16	46	40	7,0
HME 116	13	19	63,5	20	8,0
HME 117	14	18	46	26	10,0
HME 118	14	19,5	46	30	10,0
HME 120	15	21	64	32	11,0
HMEF 16-1076	16	21	64	32	11,0
HME 138	20	28	67	32	16,0
HME 145	25	35	77	32	20,0
HME 157	30	42	80	32	26,0

Further types with carbide insert on request. Quickly available!

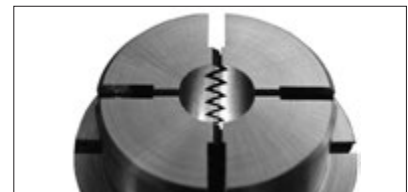
CHUCK LEVERS

We supply you with chuck levers for all turning machines!



KROKO COLLETS

f. britsch



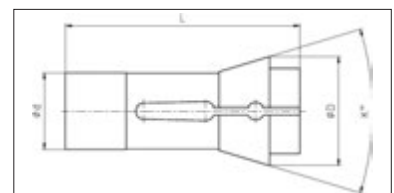
Collet types 109E (F10) / 116E (F13) / 120E (F15) / 1212E (F16-1076) / 136E (F20 76-201) / 138E (F20 76-87) / 145E (F25) / 1536E (F37)

KROKO collets with extended nose, carbide insert or even with extended nose and carbide insert on request. Quickly available!

Benefits

- High-precision clamping with runout accuracy <math><0.005\text{ mm}</math>
- Diameter variations allowed on the bar
- Clamping of square and hexagon profiles are possible
- Prevents scratches
- High and uniform clamping force
- Prevents chips and dirt into the bores and in the slots
- Ideal for clamping medical screws, also allows a constant guide of thread flanks even with differences in tolerance

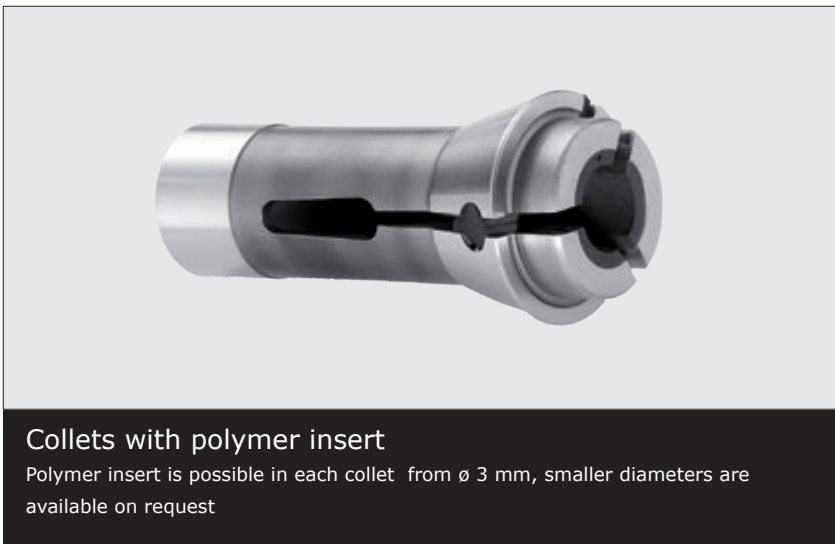
Order No.	$\varnothing d$	$\varnothing D$	L	K
Kroko116E F13 76-357	13	19	63,50	32°
Kroko120E F15 76-580	15	21	64	32°
Kroko1212E F16 76-1076	16	21	64	32°
Kroko136E F20 76-201	20	26	54	30°
Kroko138E F20 76-87	20	28	67	32°
Kroko145E F25 76-64	25	35	77	32°
Kroko1446E F30 76-101	30	38	65	30°
Kroko1536E F37 76-740	37	47	92	32°



Further types on request. Quickly available!
Kroko collet with extended nose or carbide insert on request.
Quickly available!

COLLETS WITH POLYMER INSERT

f. britsch



An overview of the benefits

- To pick up sensitive parts
- No pressure marks on the turning parts
- Allows clamping of turning parts on the thread flanks
- All collet types available



LONGSTAR

f.britsch

LongStar is a clamping device for Swiss-type lathes. Compared to the application of conventional collets, LongStar has the advantage of gripping at higher clamping force, especially during the machining of bigger workpiece diameters. As standard the bores are radial grooved.

Features

- compact segment collets with «true parallel diameter gripping» and rubber rebound elasticity
- clamping range: 0,5 mm
- usable at large diameter tolerances
- transverse grooving for improved chucking force and dust protection
- easy replacable with solid collets series F in existing chucks

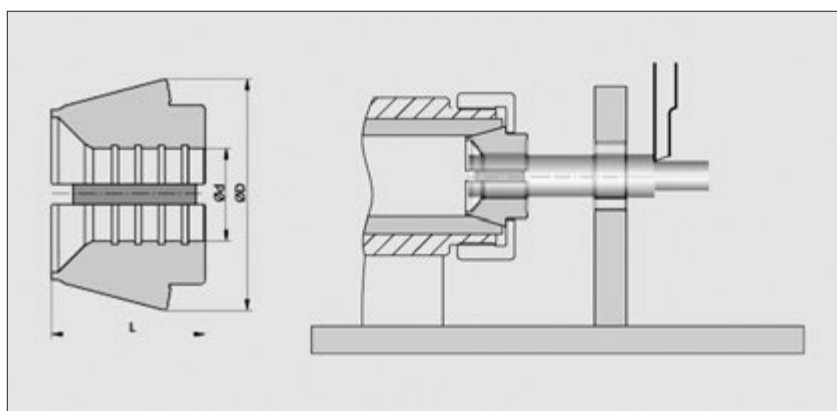


Benefits

- increased drilling and turning power by improved axial clamping force, stiffness and torque transmission
- improved machining quality with better runout accuracy ($< 0,02$ mm)
- increased runout accuracy for the whole clamping range of 0,5 mm
- precise vibrationless clamping even at high speeds
- chip prevention by rubber elements
- breakage of the collet almost not possible

LONGSTAR

f. britsch



Order No.	Ø	D	L
L145 (145E/F25)	8 - 20	35	30
L1536 (1536E/F37)	8 - 32	47	29
L171 (171E/F42)	10 - 37	54,6	36
L173 (173E/F48)	10 - 42	60	38
L185 (185E/F66)	10 - 60	84	42

Application range

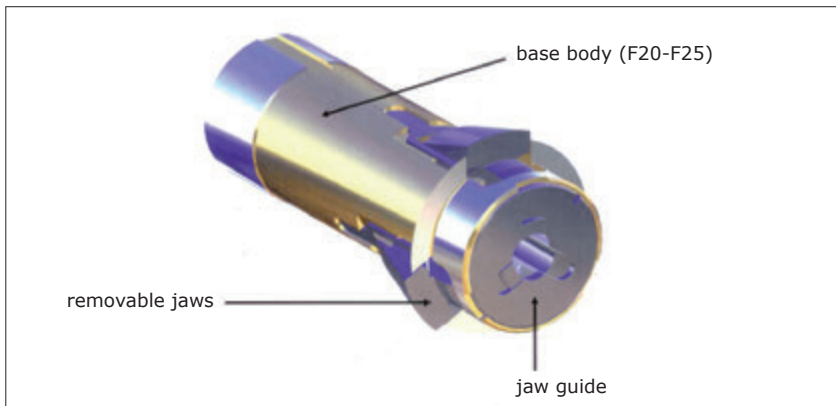
- all solid collet chucks (pressure clamping) in turning machines
- preferable in Swiss-type machines

- Diameter pitch L145 - L173: 0,5 mm
L185: 1,0 mm
- Diameter < 10 mm on request
- Standard with radial grooves
- Smooth surface on request
- Customized profiles: square, hexagon... on request

GHEZZI FIX MODULAR COLLET CHUCK SYSTEM

f.britsch

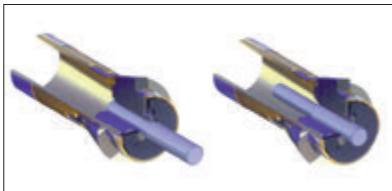
The Ghezzi-Fix chucking system incorporates three free-moving jaws which hold the workpiece on three straight lines parallel to the workpiece/spindle axis. Discrepancies to the nominal diameter do not result in any loss of quality in the machining process .



We need to know...

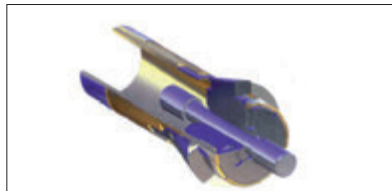
- Collet type (F20-F25 or E136, E138, E145)
- Machine type (for example Star SR-20RIV)
- Drawing of the collet sleeve of the pick-up spindle
- Drawing of the workpiece
- Clamping diameter and overlap diameter (for example clamping diameter 4,2 mm and overlap diameter 5,0 mm) Customized profiles: square, hexagon... on request

Infinitely variable chucking range



Chucking range: 2 mm per jaw set

Reaching over the workpiece



WIFEX COLLET FOR INTERNAL CLAMPING

f. britsch



WIFEX® collet types F20/136E - F20/138E - F25/145E - F37/1536E

Benefits

- Interchangeable jaws (3 pieces)
- Diameter starting from 1.5 mm
- Main body with shank F20 / F25 / F37
- "Nose" will be grinded to specific drawings
- "Nose" is hardened and grinded (according to customer's drawing)
- "Nose" can be supplied as a blank, which can be customized by the customer
- At the sub-spindle no changes are necessary. The collet can be used immediately.

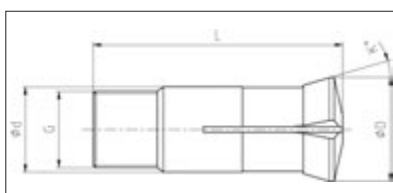
The WIFEX collet is an exclusive development to pick-up your turned parts from the inner diameter. Capacity starting \varnothing from 1.0 mm.

The expansible collet can be used exactly like a standard F type collet without any modification of the collet sleeve.

The mechanism of the collet allows the accurate clamping of your parts from inside diameter in order to do light counter-operation.

ADJUSTABLE GUIDE BUSHES WITH CARBIDE INSERT

f. britsch



All guide bushes are available with a **Raco-Morph coating**.

This coating reduces the coefficient of friction and thus ensures better smooth qualities and surface finish.

Order No.	Ø d	Ø D	Thread	L	K	Diameter	Ø-pitch
F 351	9	13	M 8 x 0,6	50	30°	0,7 - 5,5	0,1
I 351	9	12,5	M 8 x 0,75	44	16°	0,7 - 6,0	0,1
F 352	11	15	M 10 x 0,6	50	30°	1,0 - 7,5	0,1
I 352	11	14,5	M 10 x 0,8	53	16°	1,0 - 7,5	0,1
F3001	11	14,5	M 10 x 0,75	53	16°	1,0 - 7,0	0,1
I 353	16	20,5	M 14 x 1	59	16°	1,0 - 12,0	0,1
F 853	18	21,8	M 16 x 1	61	30°	1,0 - 13,0	0,1
F 104	20	24	M 20 x 1	55	30°	2,0 - 13,0	0,1
T 221	21	24	M 18 x 1	57,5	12°	3,0 - 15,0	0,5
I 354	22	29	M 19 x 1	68	16°	2,0 - 16,0	0,5
F 391	22	29	M 22 x 1	68	16°	3,0 - 18,0	0,5
F 605	24	29,5	M 24 x 1	61	30°	2,0 - 17,0	0,5
TD 26	26	29	M 25 x 1	77	16°	2,0 - 20,0	0,5
T 223	28	34	M 25 x 1	82	16°	3,0 - 21,0	0,5
T 223S	28	34	M 27 x 1	82	16°	21,0 - 23,0	1,0
I 357	28	38	M 25 x 1	81	30°	3,0 - 21,0	0,5
F 355	32	39	M 32 x 1	71	30°	3,0 - 22,0	0,5
T 227	34	41	M 34 x 1	87,5	10°	3,0 - 25,0	0,5
T 229	42	49	M 40 x 1	82	16°	3,0 - 32,0	1,0
T 245	45	52	M 42 x 1	82	16°	2,0 - 35,0	1,0
T 246	46	53	M 45 x 1	92	16°	2,0 - 38,0	1,0
T 248	48	54	M 46 x 1	82	16°	2,0 - 38,0	1,0
T 249	48	54	M 46 x 1	81	10°	2,0 - 38,0	1,0

Further types of guide bushes on request. Quickly available!

With extended carbide insert

With standard carbide insert



With extended carbide insert



Standard sizes with extended insert are in stock!

Special dimensions on request.

ADJUSTABLE GUIDE BUSHES WITH EXTENDED CARBIDE INSERT

f. britsch

The characteristics

Quality guide bushes with extended carbide insert are particularly suitable for Swiss-type lathes when long parts must be turned over again or for example, if a larger retreat of the turning part is needed, when chasing a long thread. Due to the longer carbide insert an improved guidance of the material is ensured and the escape of material from the carbide guide is prevented. An even more precise finishing is possible. All guide bush types are available with long carbide inserts of \varnothing 4.0 to 38.0mm at Britsch.

- Guide bushes with extended carbide inserts approximately 28 mm are in stock
- Max. length 40 mm (or longer) on demand



Benefits

- The escape of material from the carbide guide is prevented
- Shorter processing times are possible
- Prolonged retreat of the material is possible during the turning operation
- Less attrition
- Swiss precision
- Ideal for chasing long threads

WAVE - GUIDE BUSHES

f.britsch



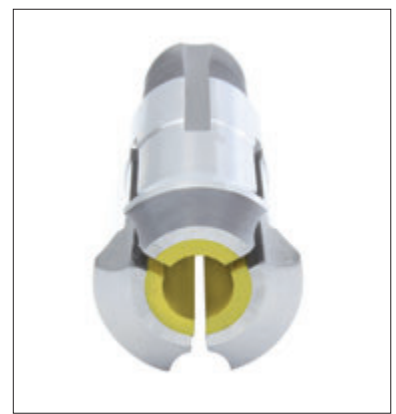
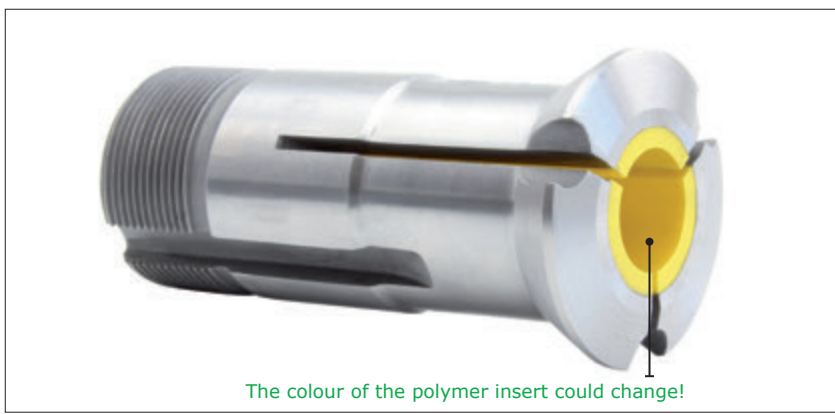
Benefits

- Due to the waveform of the slots a scratch-free surface is ensured
- Well-suited to drive square and hexagon material
- Prevents chips and dirt in the bores and slits
- Highest concentricity accuracy
- Deliverable from $\varnothing 2,0$ mm for all types of guide bushes



GUIDE BUSHES WITH POLYMER INSERT

f. britsch



The steel guide bush with polymer insert is available in all major types of guide bushes. To **order** such a guide bush, we only need the desired **guide bush type** and the **material diameter** to be processed.

The maximum diameter that we can produce for you with a guide bush type with polymer insert depends on the type of guide bush. The maximum bore diameter is slightly smaller than the guide bushes with carbide inserts.

Benefits

- High scratch-free surface on the turning parts
- Very low coefficient of friction, thus ensuring very good sliding properties of the polymer insert
- Shape consistency and stability is guaranteed by the steel body
- Concentricity accuracy is the same as what the user is used to by a guide bush
- Polymer insert extends over the entire length of the guide bush
- Polymer insert is not heat sensitive
- Polymer insert is non-abrasive

Case Study

Contrary to our skepticism, we have deployed these guide bushes in the production of a small series of 25,000 turning parts with high tolerance and surface requirements.

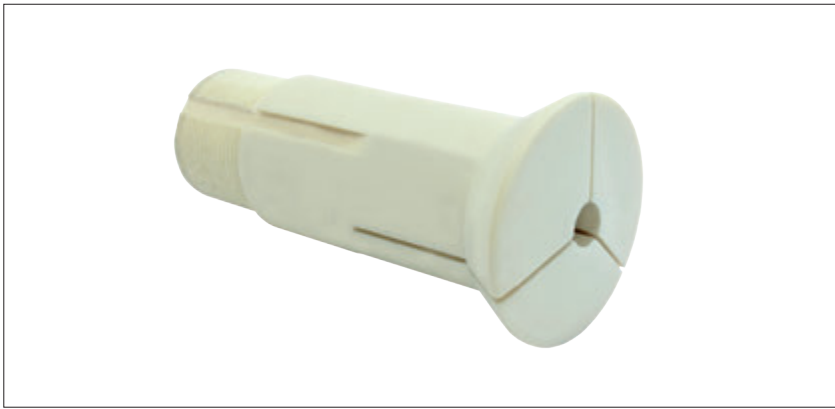
After the optical survey of the turning parts, no tolerance, i.e. deviations could be detected and the quality of the surface was flawless.

Due to this and other positive results, we will continue to upgrade several of our lathes with these guide bushes.

Source: Company Böhmeler Pforzheim, CNC Team

POLYMER - GUIDE BUSHES

f.britsch



The polymer guide bush is available in all standard guide bush types and is very suitable for machining operations with small, i.e. medium-sized forces.

To **order** such a guide bush we only need the desired guide bush types and the diameter of the material to be processed. The polymer guide bush can be made from bore diameter 3mm.

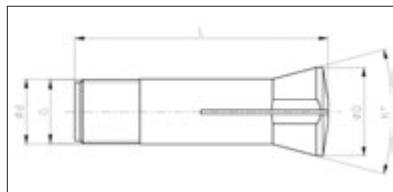
Benefits

- High scratch-free surface on the turning parts
- Very low coefficient of friction, thus ensuring very good sliding properties of the polymer guide bush
- Smooth running characteristics
- Polymer is not heat sensitive
- Polymer is non-abrasive

DRAW-IN COLLETS

SERIES 300 / W-TYPE

f. britsch



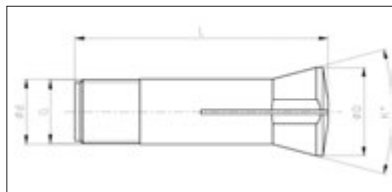
Order No.		Ø d	Ø D	L	K	Thread	Maximum		
							Ø	Hexagon	Square
ZB 6 128		6	10,5	31	40°	M5 x 36 f 55	6,0	-	-
EB06 wrench for ZB 6 collet on request									
302 E	B 8 72-137	8	12,7	35	40°	W6,82x6,25 55	8,0	-	-
302E / B8 wrench and toolholder on request									
314 E	W10 80-1	10	14	43,7	30°	M9,83x0,833	10,0	-	-
318 E	W12 80-2	12	16	45,6	30°	S11,75x8 Gg.	12,0	-	-
319 E		12	18	62,2	40°	Tr. 12x1	10,0	on request	
321 E	W15 80-3	15	20,2	58,3	30°	S14,75x1,25	12,0	-	-
324 E	B15 72-139	15	21,5	55,5	40°	M13x1	15,0	-	-
330 E		16	24	72,8	40°	Tr. 16x1,5	13,0	on request	
349 E	W20 80-4 up to Ø 16	20	26,3	73	30°	S19,7x1,667	20,0	16,0	14,0
	reinforced W20 80-107 Ø 16,5-20					3 Gg./5mm			
W20 with extended nose (ESW20) on the next page									
351 E		20	28	83	40°	Tr.20x1,5	17,5	on request	
355 E	L20 77-122	20	28	123	35°	S20x2	18,0	-	-
358 E	B23	23	32	86	40°	M21,2x1	20,0	14,0	14,0
359 E		23	32	93,8	40°	Tr. 23x1,5	20,0	on request	
362 E		25	34	89	30°	M21,2x1	22,0	on request	
363 E		25	33,5	89	32°	M23x1	22,0	16,0	15,0
364 E	W25 80-5 Ø 0,5-21,0	25	34	97,6	30°	S25x1/15"	25,0	19,0	16,0
	reinforced W 25 80-700 Ø 21,5-25,0								
W25 with extended nose (ESW25) on the next page									
366 E		28	36	106,5	37°	Tr.27x1/20"	25,0	19,0	16,0
367 E		28	38	104,4	40°	Tr.28x1,5	24,0	-	-
385 E C5	W31,75 80-842	31,75	37,5	89	20°	31,45x1/20"	26,0	26,0	22,0
386 E		32	45	115	40°	Tr.32 x 1,5	29,0	23,0	20,0
EB32/3713E	B32 72-65	32	40	106	30°	29,7x15f"	30,0	-	-

**Further types and customized draw-in collets on request.
Quickly available!**

DRAW-IN COLLETS

SERIES 300 / W-TYPE

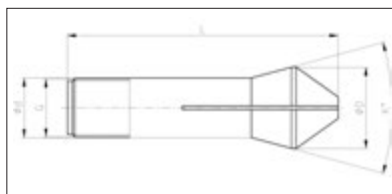
f. britsch



Order No.	Ø d	Ø D	L	K	Thread	Maximum			
						Ø	Hexagon	Square	
EB 45	72-199	45	53	115	30°	M42x1,5	45,0	30,0	30,0
ES 0388 c	Tornomat	45	60	146	40°		on request		
390 E		47	60	115	40°	Tr.47x1,5	42,0		

DRAW-IN COLLETS WITH EXTENDED NOSE

SERIES 300 / W-TYPE

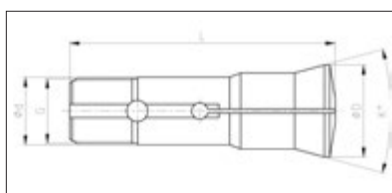


Order No.	Ø d	Ø D	L	K	Thread	Maximum			
						Ø	Hexagon	Square	
ESW 20	W20 80-92744	20	26,3	84,5	30°	S19,7x1,667	16,0	-	-
ESW 20	W20 80-93286	20	26,3	84,5	30°	S19,7x1,667	20,0	-	-
ESW 25	W25 80-92872	25	33,7	112,2	30°	S25x1/15"	21,0		

Further types and customized draw-in collets with extended nose on request. Quickly available!

DRAW-IN COLLETS HYDROMAT

f. britsch



Order No.	Ø d	Ø D	L	K	Thread	Maximum			
						Ø	Hexagon	Square	
EHW 20	80-2030	20	26,3	96,5	30°	Ø 19,7 x 1,666 ± 45°/5°	20,0	17,00	14,00
EHW 25	80-93174	25	33,7	97,6	30°	Ø 24,7 x 1,693 ± 45°/5°	25,40	22,00	19,00
EHW 25 (reinforced)	80-2033	25	33,7	97,6	30°	Ø 24,7 x 1,693 ± 45°/5°	25,40	22,00	19,00
EHB 32	72-2030	32	40	106	30°	Ø 29,7 x 1,693 ± 45°/5°	32,00	27,00	22,00
EHB 32/45	72-2033	32	53	122	30°	Ø 29,7 x 1,693 ± 45°/5°	45,00	38,50	31,00
EHB 45	72-2036	45	53	115	30°	M 42 x 1,5	45,00	38,50	31,00

**HYDROMAT COLLETS with customized positions of slots and customized profiles on request.
Quickly available!**

COLLET STOPS

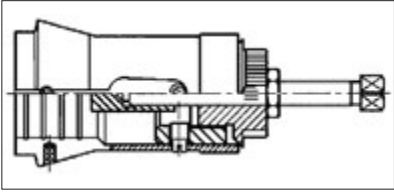


The HD collet stop is the ideal stop for all types of collets, because it can be delivered in 29 different sizes between 3.9 and 63mm diameter. The breakdown of the sizes can be seen on the next page.

With the collet stop, small series of screws, pins and the like can be produced on the lathe without the need to be constantly measured and monitored. Thus, significant time and labor savings can be achieved.

The particular advantage of the HD collet stop is that around the girth three small balls are used, which are pushed through the adjustment of a knurled nut on the inner wall of the collet and so ensures a tight fit of the stop in the collet.

Absolutely tight fit and easy installation. Usable for round, square and hexagon profiles. Collet shaft is not deformed and does not affect the collet behaviour. Also suitable as a stop for hollow parts.



Installation instructions

Screw in the three (or four) cross-screws and then insert the stop in the collet so that the cross-screws are covered with the collet slots. Now unscrew the cross-screws and tighten the stop with the locknut.

COLLET STOPS

f. britsch

Size	F-Type / W-Type	E-Type	Order No.	Figure
3,9 / 4,5	B8 – F6	100 E	HDAN 039	1
4,5 / 5,4	W8 – W9 F7	101 E - 102 E - 103 E – 313 E	HDAN 045	1
5,4 / 6,6	F7 – F8		HDAN 054	1
6,5 / 7,5	W10 – F9 F 10	109 E – 111 E - 112 E	HDAN 065	1
8 / 9,9	W12	318 E – 323 E – 324 E	HDAN 080	1
9,3 / 11	B15 – W15 – F12 – F14 – F15	113 E – 118 E – 120 E - 127 E – 328 E - 329 E - 350 E – 355	HDAN 093	1
	72 – 199	EB 45	HDAN EB 45	2
12 / 13,9	W16 – W50 – F15 – F16 – F18		HDAN 120	1
13,5 / 15,3	W20 349 E	125 E	HDAN 135	1
		E349	HDAN W20	2
		140 E	HDAN 140 E	2
		145 E	HDAN 145 E	1
		148 E	HDAN 148 E	2
15 / 16,1	B23 – F20	137 E – 358 E – 359 E	HDAN 150	1
		161 E	HDAN 161 E	2
		162 E – 163 E	HDAN 163 E	2
16,4 / 18,4	F22	364 E	HDAN 164	1
		164 E	HDAN 164 E	2
16,5 / 19,9	W25 364 E	136 E – 140 E - 362 E – 363 E	HDAN 165	1
		171 E	HDAN 171 E	2
		173 E	HDAN 173 E	2
		177 E	HDAN 177 E	1
		185 E	HDAN 185 E	2

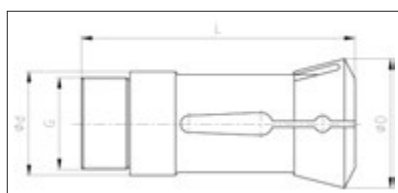
COLLET STOPS

f. britsch

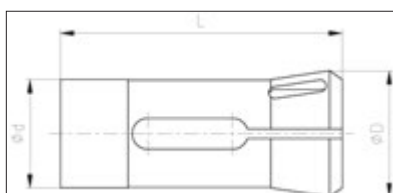
Size	F-Type / W-Type	E-Type	Order No.	Figure
19,8 / 23	F26 – F25	144 E – 366 E	HDAN 198	1
22 / 24	F27 – F28	367 E	HDAN 220	1
23 / 25	B 32	148 E – 156 E	HDAN 230	1
24,6 / 28	F30 – F32 – W31	156 E – 157 E – 161 E – 385 E – 386 E	HDAN 246	1
27,6 / 31	F35 – F34		HDAN 276	1
30 / 34	F38	162 E	HDAN 300	1
34,8 / 41	F42	171 E	HDAN 348	1
		349 E	HDAN 349	2
		364 E	HDAN 364	2
39,8 / 45	F48	173 E	HDAN 398	1
54 / 58	F64		HDAN 540	1
59 / 63	F66	185 E	HDAN 590	1

COLLETS, FEED COLLETS, PICK-UP COLLETS FOR AUTOMATIC MULTI-SPINDLE LATHES SERIES 9000

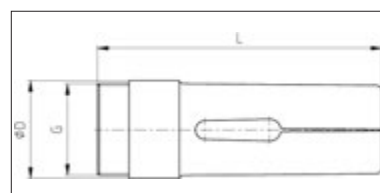
f. britsch



Collet



Pick-up collet



Feed collet

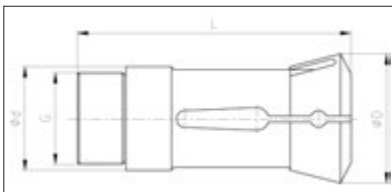
MULTI-SPINDLE LATHES: GILDEMEISTER

Type	Order No.	Ø d	Ø D	L	K	Thread
AS 12						
Collet	9013 E	26,8	34	88	15°	M24x1 L
Feed collet	9259 E	-	19,5	82	-	M17x1
Pick-up collet	-	15,8	22	85	5°	M13x0,75 L
AS 16/20, GM 20, GS 20						
Collet	9012 E	34	42	90	16!	M30x1 L
Feed collet	9258 E	-	25	90	-	M24x1
Pick-up collet	9012 EG / 3560 E	26	28,5	80	6°	M21,5x0,75
AS 16/AS, GS 20-6 V.25, GMC 20 IMS						
Collet	9017 E	38	45,5	90	16°	M34,5x0,75 L
Feed collet	9288 E	-	30,5	90	-	M28,5x0,75 L
Pick-up collet	on request					
AS 25						
Collet	9045 E	45	60,4	164	15°	M40x1 L
Feed collet	9287 E	-	33	140	-	M30x1 L
Pick-up collet	on request					
GS 25 V.32						
Collet	9046 E	45	60,4	164	15°	M42x1 L
Feed collet	-	-	38,5	140	-	M36x1
Pick-up collet	-	37	45	78	15°	M30x1,5
AS GS GM 32, GM 35-6/8, GMC 35 IMS						
Collet	9069 E	53	69,4	139	15°	M48x1,5 L
Feed collet	on request					
Pick-up collet	on request					

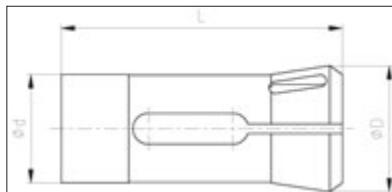
Further collets for GILDEMEISTER multi-spindle lathes on request.
Quickly available!

COLLETS, FEED COLLETS, PICK-UP COLLETS FOR AUTOMATIC MULTI-SPINDLE LATHES SERIES 9000

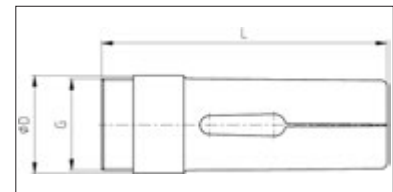
f.britsch



Collet



Pick-up collet



Feed collet

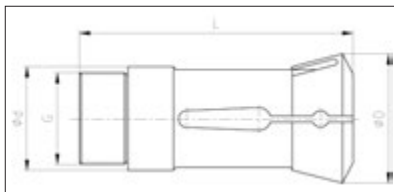
MULTI-SPINDLE LATHES: GILDEMEISTER

Type	Order No.	Ø d	Ø D	L	K	Thread
AS GS GM42-6						
Collet	9115 E	64	80,5	134	15°	M59x1,5 L
Feed collet	9374 E	-	51,5	136	-	M48x1,5
Pick-up collet	-	47	52,5	73	8°	AtcB Ø29x2,7
AS 48						
Collet	9132 E	70	90,4	167,5	15°	M65x1,5 L
Feed collet	9368 E	-	57	160	-	M54x1,5 L
Pick-up collet	on request					
AS 67						
Collet	9178 E	90	115,4	183,5	15°	M85x1,5 L
Feed collet	9447 E	-	77,5	170	-	M74x1,5 L
Pick-up collet	on request					
AS 82						
Collet	9209 E	109	138,4	201 m	15°	M102x1,5 L
Feed collet	9475 E	-	94	180	-	M88x1,5 L
Pick-up collet	on request					
AS 100						
Collet	9239 E	128	160	263 m	15°	M122x1,5 L
Feed collet	9483 E	-	114	235	-	M108x1,5 L
Pick-up collet	on request					

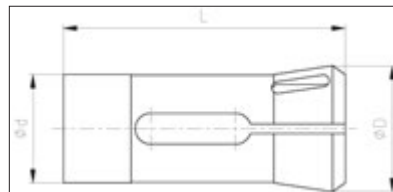
Further collets for GILDEMEISTER multi-spindle lathes on request.
Quickly available!

COLLETS, FEED COLLETS, PICK-UP COLLETS FOR AUTOMATIC MULTI-SPINDLE LATHES SERIES 9000

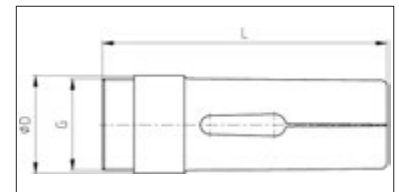
f. britsch



Collet



Pick-up collet



Feed collet

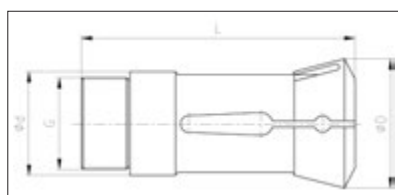
MULTI-SPINDLE LATHES: SCHÜTTE

Type	Order No.	Ø d	Ø D	L	K	Thread
SE 16, SF16, SE18						
Collet	9007 E	32	41,8	84	30°	M28x1 L
Feed collet	9255 E	-	25	88	-	M23x1
Pick-up collet	9007 E/G-SE 3540E	25	35,1	58	-	M18x1,5 L
SF20						
Collet	9016 E	32	41,6	84	30°	M30x1 L
Feed collet	9262 E	-	27	88	-	M25x1
Pick-up collet	9016 E/G 3607 E	28	36	50	-	M24x1,5 L
VD 25, SD25, SE 25						
Collet	9039 E	46	60,4	120	30°	M40x1,5 L
Feed collet	9282 E	-	35	118	-	M33x1,5
Pick-up collet	9039 E/G-SD 3722E	32	45,1	71	-	M22x1,5 L
SF 26, SE 26, AF 26						
Collet	9039 E	46	60,4	120	30°	M40x1,5 L
Feed collet	9282 E	-	35	118	-	M33x1,5
Pick-up collet	9039 E/G-SF 1495 E	34	42	53	-	-
SF 32, AF 32, SD 32, VD 32						
Collet	9070 E	53	69,7	136	30°	M47x1,5 L
Feed collet	9319 E	-	41,8	130	-	M38x1,5
Pick-up collet	9070 E/G-SF 1700 E	52	60,6	60	-	-
SF 40, SF 42, AD 40						
Collet	9112 E	62,9	78,3	157	30°	M56x1,5 L
Feed collet	9372 E	-	51	152	-	M48x1,5
Pick-up collet	9070 E/G-SF 1700 E	52	60,6	60	-	-

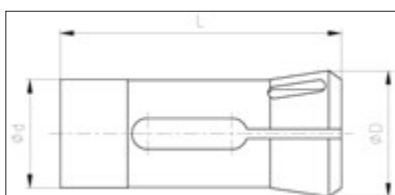
**Further collets for SCHÜTTE multi-spindle lathes on request.
Quickly available!**

COLLETS, FEED COLLETS, PICK-UP COLLETS FOR AUTOMATIC MULTI-SPINDLE LATHES SERIES 9000

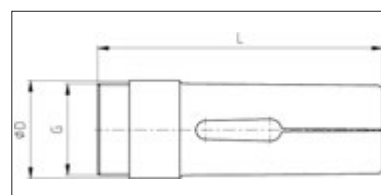
f. britsch



Collet



Pick-up collet



Feed collet

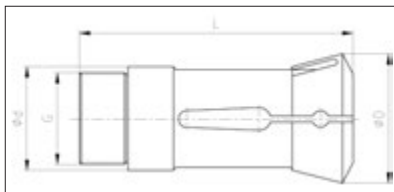
MULTI-SPINDLE LATHES: INDEX-STEINHÄUSER

Type	Order No.	Ø d	Ø D	L	K	Thread
MS 16						
Collet	9007 E	32	41,8	84	30°	M28x1 L
Feed collet	9255 E	-	25	88	-	M23x1
Pick-up collet	on request					
KS 20/22						
Collet	9033 E	40	55,2	102	30°	M35x1,5 L
Feed collet	9273 E	-	31	102	-	M28x1,5 L
Pick-up collet	on request					
KS/MS 25						
Collet	9039 E	46	60,5	112	30°	M40x1,5 L
Feed collet	9282 E	-	37	118	-	M33x1,5
Pick-up collet	9039 E/SY GZI 25	25	35,4	65	-	-
KS 32						
Collet	9070 E	53	69,3	136	30°	M47x1,5 L
Feed collet	9319 E	-	41,8	130	-	M38x1,5
Pick-up collet	9108 E/G	36	49	49,2/71	-	M28x1,5 L
KS 42						
Collet	9108 E	62	82,4	180	30°	M58x1,5 L
Feed collet	9364 E	-	54	170	-	M50x1,5 L
Pick-up collet	9108 E/G	36	49	49,2/71	-	M28x1,5 L
KS 50						
Collet	9133 E	70	92	157	30°	M65x2 L
Feed collet	9402 E	-	60	156	-	M57x2 L
Pick-up collet	9108 E/G	36	49	49,2/71	-	M28x1,5 L

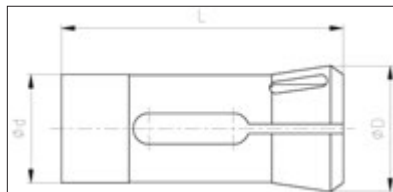
Further collets for INDEX multi-spindle lathes on request. Quickly available!

COLLETS, FEED COLLETS, PICK-UP COLLETS FOR **TORNOS** AUTOMATIC MULTI-SPINDLE LATHES SERIES 9000

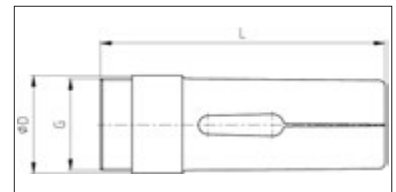
f. britsch



Collet



Pick-up collet



Feed collet

Collets, feed collets and pick-up collets for the **Tornos MultiSwiss** are also available with us.

TORNOS AS / BS 14						
	Order No.	Ø d	Ø D	L	Thread	K
Collet	9001 E / P25 78-334	25	35,0	73	M22 x 1	32°
Feed collet	9521 E / A17,9 71-335	-	17,9	70	M16 x 0,75	-
Pick-up collet	SYF 16 / 3263 E	16	21,0	66	M14 x 0,75	-

TORNOS AS / SAS 16						
	Order No.	Ø d	Ø D	L	Thread	K
Collet	9021 E / W25 80-1923	25	35,0	92	M25 x 1	31°
Feed collet	9265 E / A22,8 71-1922	-	22,8	98	M20 x 0,75	-
Pick-up collet	SYF 16 / 3263 E	16	21,0	66	M14 x 0,75	-

TORNOS BS 20B						
	Order No.	Ø d	Ø D	L	Thread	K
Collet	9020 E	36	45,0	107	M33 x 1,25 internal	31°
Feed collet	9266 E	-	27,7	116	M25 x 1	-
Pick-up collet	SYF 145 E	25	34,8	77	M22 x 1	32°

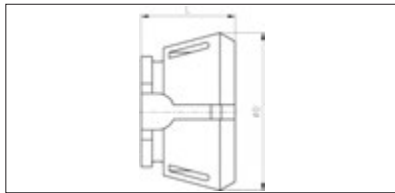
TORNOS Multi Deco 20								
	Order No.	Ø d	Ø D	L	Thread	Maximum		
						Ø	Hexagon	Square
Collet	ET 9012	34	42,3	90	M30 x 1 left	25,0	21,0	17,0
Feed collet	E 9258		25,0	90	M24 x 1	20,0	17,0	14,0
Pick-up collet	ETPU 9012	28	32,0	73		24,0	21,0	17,0

TORNOS Multi Deco 26 und 32								
	Order No.	Ø d	Ø D	L	Thread	Maximum		
						Ø	Hexagon	Square
Collet	ET 9039	46	60,3	120	M40 x 1,5 left	33,0	29,0	24,0
Feed collet	E 9282		36,0	118	M33 x 1,5	26,0	22,0	18,0
Pick-up collet	ETPU 9039	35,5	40,0	80		32,0	27,0	22,0

Further collets for TORNOS multi-spindle lathes on request. Quickly available!

CLAMPING HEADS

SK 32 | SK 42 | SK 52 | SK 65 | SK 80 | SK 100
 SK 32 ZW | SK 9022 ZW | SK 9039 ZW
 SK 6970 ZW | SK 6970 BZ



Furthermore, deliverable even at short notice:

- SK 32 ZW
- SK 9022 ZW
- SK 9039 ZW
- SK 6970 ZW
- SK 6970 BZ

HSW clamping heads available for do-it-yourself turning smooth, short clamping heads (BZIG).

And other types and special sizes Also available in square and hexagon profiles.

Please contact us!

The advantages at a glance:

- Rigid, hardened segments of chrome-nickel steel
- All functional surfaces are grinded in one clamping operation
- Special versions with axial and radial grooves for high grip and extreme cutting forces
- Numerous profile clamping options
- Fast, easy and convenient replacement: manual, pneumatic or pneumatic-hydraulic

Order No.	Version	Clamping range	Ø D	L
SK32 BZI	bore Ø	smooth	57,7	47
	(Ø-pitch 1,0 mm)	radial grooves		
		axial and radial grooves		
SK32 BZIG	bore Ø	smooth	57,7	44
SK42 BZI	bore Ø	smooth	79,3	47
	(Ø-pitch 0,5 mm)	radial grooves		
		axial and radial grooves		
SK42 BZIG	bore Ø	smooth	79,3	42
SK52 BZI	bore Ø	smooth	79,2	46
	(Ø-pitch 0,5 mm)	radial grooves		
		axial and radial grooves		
SK52 BZIG	bore Ø	smooth	79,2	46
SK65 BZI	bore Ø	smooth	99,5	58
	(Ø-pitch 0,5 mm)	radial grooves		
		axial and radial grooves		
SK65 BZIG	bore Ø	smooth	99,5	53
SK80 BZI	bore Ø	smooth	114,5	53
	(Ø-pitch 1,0 mm)	radial grooves		
		axial and radial grooves		
SK80 BZIG	bore Ø	smooth	114,5	53
SK100 BZI	bore Ø	radial grooves	144,5	59
	(Ø-pitch 1,0 mm)			
		axial and radial grooves		

Also square and hexagon profiles in stock !

ER-COLLETS SERIES 400

f. britsch

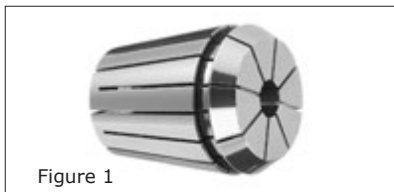
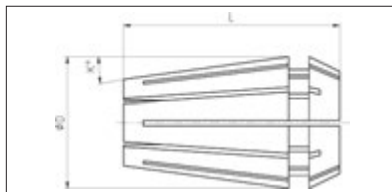


Figure 1



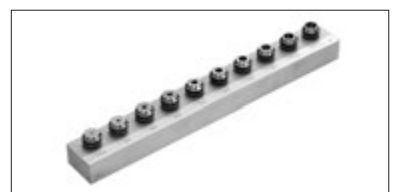
We supply you with all kinds of toolholders, nuts, driven tools and cutting tools! Please ask us!

Also in **ULTRA PRECISION (HIGHER RUNOUT ACCURACY)** available!

Order No.	Figure	Ø D	L	K	Standard ø from-to	
ER 08	4004 E	1	8	13,8	8°	0,5-5,0
ESX 9	4006 E	1	9	14,5	8°	1,0-5,0
ER 11	4008 E	1	11	17	8°	1,0-7,0
SPECIAL SIZE						7,5+8,0
ESX 12	424 E	1	12	18	8°	1,0-7,0
ER 16	426 E	1	17	28	8°	1,0-10,0
SPECIAL SIZE						10,5+11+11,5+12
ER 20	428 E	1	21	32	8°	1,0-13,0
SPECIAL SIZE						13,5+14+14,5+15
ER 25	430 E	1	26	34	8°	1,0-16,0
SPECIAL SIZE						16,5+17+18+19+20
ER 32	470 E	1	33	40	8°	2,0-20,0
SPECIAL SIZE						21,0+22,0
ER 40	472 E	1	41	46	8°	3,0-26,0
SPECIAL SIZE						27+28+29+30
ER 50	477 E	1	52	60	8°	6,0-34,0

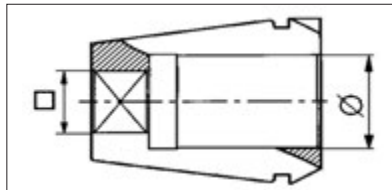
Order No.	Set	Standard ø from-to	ø-pitch
ZWT ER 8	9 ER-Collets	1,0 - 5,0	0,5
ZWT ESX 9	9 ER-Collets	1,0 - 5,0	0,5
ZWT ER 11	13 ER-Collets	1,0 - 7,0	0,5
ZWT ESX 12	9 ER-Collets	1,0 - 7,0+1,5+2,5	1,0
ZWT ER 16	10 ER-Collets	1,0 - 10,0	1,0
ZWT ER 20	12 ER-Collets	2,0 - 13,0	1,0
ZWT ER 25	15 ER-Collets	2,0 - 16,0	1,0
ZWT ER 32	18 ER-Collets	3,0 - 20,0	1,0
ZWT ER 40	23 ER-Collets	4,0 - 26,0	1,0
ZWT ER 50	12 ER-Collets	12,0 - 34,0	2,0

ER/ESX SETS



ER-RIGID TAPPING COLLETS SERIES 400

f. britsch



RIGID TAPPING COLLETS WITH INTERNAL SQUARE ER/ESX DIN 6499

Type	ø x square
ERG 08	2,2x1,8 / 2,5x2,1 / 2,8x2,1 / 3,5x2,7
ERG 11	2,5x2,1 / 2,8x2,1 / 3,5x2,7 / 4,0x3,2 / 4,5x3,55 / 5,0x4,0 / 5,5x4,5 / 6,0x5,0
ERG 16	2,8x2,1 / 3,5x2,7 / 4,0x3,2 / 4,5x3,55 / 5,0x4,0 / 5,5x4,5 / 6,0x5,0 / 6,3x5,0 / 7,0x5,6 / 7,1x5,6 / 8,0x6,3 / 9,0x7,1 / 10,0x8,0
ERG 20	3,5x2,7 / 4,0x3,2 / 4,5x3,55 / 5,0x4,0 / 5,5x4,5 / 6,0x5,0 / 6,3x5,0 / 7,0x5,6 / 7,1x5,6 / 8,0x6,3 / 9,0x7,1 / 10,0x8,0 / 11,0x9,0 / 11,2x9,0 / 12,0x9,0
ERG 25	3,2x2,7 / 4,0x3,2 / 4,5x3,55 / 5,0x4,0 / 5,5x4,5 / 6,0x5,0 / 6,3x5,0 / 7,0x5,6 / 7,1x5,6 / 8,0x6,3 / 9,0x7,1 / 10,0x8,0 / 11,0x9,0 / 11,2x9,0 / 12,0x9,0 / 12,5x10,0 / 14,0x11,2 / 16,0x12,5
ERG 32	4,0x3,2 / 4,5x3,55 / 5,0x4,0 / 5,5x4,5 / 6,0x5,0 / 6,3x5,0 / 7,0x5,6 / 7,1x5,6 / 8,0x6,3 / 9,0x7,1 / 10,0x8,0 / 11,0x9,0 / 11,2x9,0 / 12,0x9,0 / 12,5x10,0 / 14,0x11,2 / 16,0x12,5 / 18,0x14,5 / 20,0x16,0
ERG 40	6,0x5,0 / 6,3x5,0 / 7,0x5,6 / 7,1x5,6 / 8,0x6,3 / 9,0x7,1 / 10,0x8,0 / 11,0x9,0 / 11,2x9,0 / 12,0x9,0 / 12,5x10,0 / 14,0x11,2 / 16,0x12,5 / 18,0x14,5 / 20,0x16,0 / 22,0x18,0 / 25,0x20,0

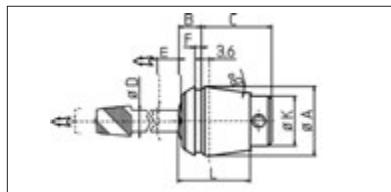


We supply you with all kinds of taps, tool holders, nuts, driven tools and cutting tools!

Please ask us!

PCM TAPPING COLLETS WITH AXIAL COMPENSATION

f. britsch



The most rational and economical solution for tapping on CNC machines with axial compensation built in the collet.

Advantages of PCM tapping collets

- Fully interchangeable with ESX or ER collets, resp. DIN 6388 / 6499
- easy to use with short, medium or long collet holders
- automatic extraction by standard collet nut
- spring force adapted to the tap size
- strong and compact construction, excellent tap alignment
- No expensive tapping tools necessary
- Simple mounting of tapping collet
- Spring tension is adapted to tap size
- Compact and very robust design

Use recommendations

At rest, the tapping collet has an extension stroke only, but no compression stroke.

The PCM tapping collet is made of one plain external body, one bored sleeve getting the tap shank, 2 or 4 clamping screws on the tap square and one return spring.

On CNC machines following tapping process is recommended: fast approach then tapping feed from 95 to 99 % of the pitch value, so as to be in the compensation stroke when spindle rotation and feed movement are simultaneously reversed. Use standard canned cycles.

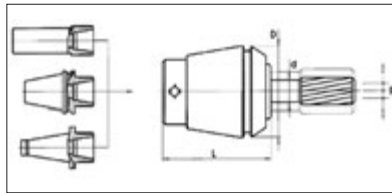
Order No.	E-Type	ER-Type	a	A	B	C	D max.	E	K	L
PCMET1-12 ...	424 E	ER11	8°	11,5	8,5	13	3,55	5,5	7	18
PCMET1-16 ...	426 E	ER16	8°	17	10,5	18	6,3	7	11	22
PCMET1-20 ...	428 E	ER20	8°	21	11,5	19,5	7,1	7	14	24
PCMET1-25 ...	430 E	ER25	8°	26	13,5	20,5	10	8	19	26
PCMET1-32 ...	470 E	ER32	8°	33	14,5	28,5	12,5	10	23	33
PCMET1-40 ...	472 E	ER40	8°	41	15,5	38,5	17	13	28	42

RT1-61 ...	404 E	10	2,85°	15,15	9	18	6,3	7	11	22
RT1-62 ...	407 E	12	2,85°	17,75	9,5	21,5	7,1	7	14	24
RT1-63 ...	410/415 E	16	2,85°	22,65	12,5	22	10	8	19	26
RT1-64 ...	440/454 E	20	2,85°	27,4	14	29	12,5	10	23	33
RT1-65 ...	444/462 E	25	2,85°	32,9	14	38	17	13	28	40

**We supply you with all kinds of taps, tool holders, nuts, driven tools and cutting tools!
Please ask us!**

ER-FLOATING REAMER COLLETS SERIES 400

f. britsch



Collets for floating reamers and for rigid drilling with pendulum balance.

Floating collets replace pendulum holder.

Preferably used in driven tools.

ER-FLOATING REAMER COLLET DIN 6499B with pendulum balance

Order No.	ER-Type	D	L	R	Standard ϕ
ERP IM-CBA-16	ER16	17	29	0,5	2/3/4/5/6/7 1,5/2,5/3,2/3,5/3,55/4,5/5,5/5,6/6,3
ERP IM-CBA-20	ER20	21	32	0,5	3/4/5/6/7/8 1,5/2,5/3,2/3,5/3,55/4,5/5,5/5,6/6,3
ERP IM-CBA-25	ER25	26	35	0,5	3/4/5/6/7/8/9/10 1,5/2,5/3,2/3,5/3,55/4,5/5,5/5,6/6,3
ERP IM-CBA-32	ER32	33	44	0,5	4/5/6/7/8/9/10/11/12/13/14 2,5/3,2/3,5/3,55/4,5/5,5/5,6/6,3
ERP IM-CBA-40	ER40	41	56	0,5	5/6/7/8/9/10/11/12/13/14/15/16 2,5/3,2/3,5/3,55/4,5/5,5/5,6/6,3

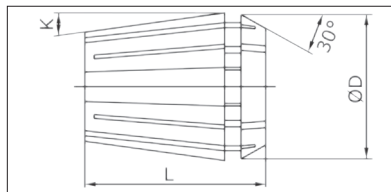


We supply you with all kinds of reamers, tool holders, nuts, driven tools and cutting tools!

Please ask us!

ER-COLLETS SEALED SERIES 400

f. britsch



Order No.	Ø D	L	K	Standard ø
ER 11 S	11	17,0	8°	3 / 3,5 / 4 / 4,5 / 5 / 5,5 / 6 / 6,5 / 7 / 7,5 / 8
ER 16 S	17	28	8°	3 / 3,5 / 4 / 4,5 / 5 / 5,5 / 6 / 6,5 / 7 / 7,5 / 8 / 8,5 / 9 / 9,5 / 10 / 10,5 / 11 / 11,5 / 12
ER 20 S	21	32	8°	3 / 3,5 / 4 / 4,5 / 5 / 5,5 / 6 / 6,5 / 7 / 7,5 / 8 / 8,5 / 9 / 9,5 / 10 / 10,5 / 11 / 11,5 / 12 / 13 / 13,5 / 14 / 14,5 / 15
ER 25 S	26	34	8°	3 / 3,5 / 4 / 4,5 / 5 / 5,5 / 6 / 6,5 / 7 / 7,5 / 8 / 8,5 / 9 / 9,5 / 10 / 10,5 / 11 / 11,5 / 12 / 12,5 / 13 / 13,5 / 14 / 14,5 / 15 / 15,5 / 16 / 16,5 / 17 / 17,5 / 18 / 19,5 / 20
ER 32 S	33	40	8°	3 / 4 / 5 / 6 / 7 / 8 / 9 / 10 / 11 / 12 / 13 / 14 / 15 / 16 / 17 / 18 / 19 / 20 / 21 / 22
ER 40 S	41	46	8°	3 / 4 / 5 / 6 / 7 / 8 / 9 / 10 / 11 / 12 / 13 / 14 / 15 / 16 / 17 / 18 / 19 / 20 / 21 / 23 / 25 / 27 / 28 / 29 / 30

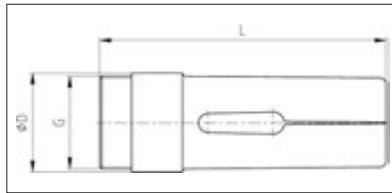


We supply you with all kinds of tool holders, nuts, driven tools and cutting tools!

Please ask us!

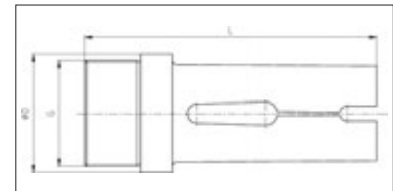
FEED COLLETS SERIES 200

f. britsch



Order No.	Ø D	L	G	Maximum		
				Ø	Hexagon	Square
207 E	18	70	M16x1 L	13,0	12,0	9,0
217 E	21	70	M20x1 L	16,0	15,0	11,0
220 E	24	85	M22x1 L	18,0	16,0	12,0
236 E	30	95	M28x1 L	25,0	22,0	17,0
237 E	31	90	M29x1 L	25,0	22,0	18,0
254 E	42	116	M40x1 L	36,0	31,0	25,0
273 E	60	140	M58x1 L	52,0	45,0	40,0

EXTERNAL FEED COLLETS SERIES 200



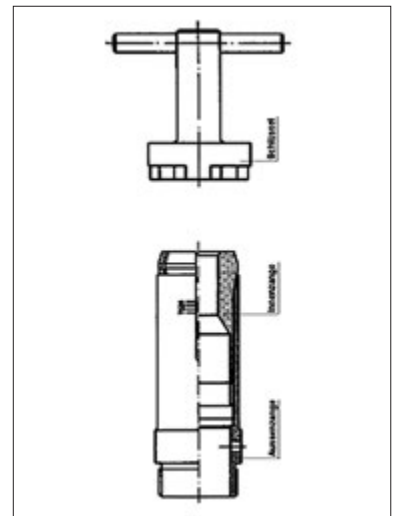
Order No.	Ø D	L	G	Maximum		
				Ø	Hexagon	Square
242 E	42	120	M36x1,5		on request	
259 E	56	138	M50x1,5		on request	
278 E	75	138	M68x1,5		on request	

ADJUSTABLE FEED COLLETS

f. britsch



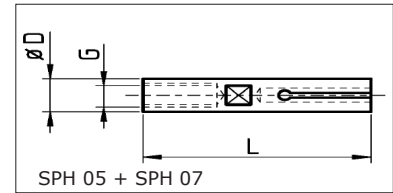
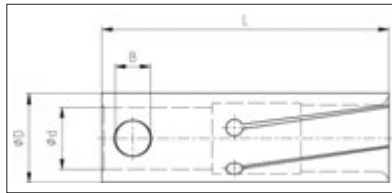
Type	External collet	Internal collet	Wrench
Index	Order No.	Order No.	Order No.
12-ON 12	RSA 207	RSV 12	RSS 12
ON extended	RSA 217	RSV 16	RSS 16
18-C 19	RSA 220	RSV 16	RSS 16
24-C 29-B 30	RSA 236	RSV 24	RSS 24
25	RSA 237	RSV 24	RSS 24
36-B 42	RSA 254	RSV 32	RSS 32
52-B 60	RSA 273	RSV 50	RSS 50
Gildemeister			
GM20	RSA 9258	RSV 20	RSS 20
AS16-20/GS20			
AS20/AS25	RSA9258-2	RSV 24	RSS 24
AV/AS32	RSA 9316	RSV 32	RSS 32
Index ABC series			
ABC 25	RSA 237	RSV 24	RSS 24
ABC 36	RSA 254	RSV 32	RSS 32
ABC 52	RSA 273	RSV 50	RSS 50
Schütte			
SF 13	RSA 9261	RSV 12	RSS 12
SG18/AG20	RSA 9255	RSV 16	RSS 16
VD/SD/SE25	RSA 9282	RSV 25	RSS 25
SF26/AF26			
VD/SD32/S32PC	RSA 9319	RSV 32	RSS 32
SF32/AF32			
AD40/AF42	RSA 9372	RSV 40	RSS 40
SF42/SF40			
Tornos			
AS 14	RSA 9251	RSV 14	RSS 14
BS 20 B	RSA 9266	RSV 20	RSS 20



Further adjustable feed collets on request.
Quickly available!

BAR FEED COLLETS FOR BAR LOADERS

f.britsch

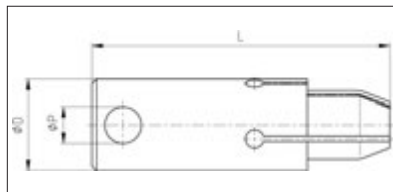


Order No.		Ø D	Ø d	L	B	Ø from - to	Ø-pitch
SPH 05	(200 E)	5	M4	37	X	1,0 - 4,5	0,1
SPH 07	(208 E)	7	M5	37	X	1,0 - 6,3	0,1
SPH 10	(210 E)	10	7	40	4	1,5 - 8,5	0,5
SPH 11		11	7	40	4	9,0 - 10,0	0,5
SPH 12	(212 E)	12	8	40	4	2,0 - 12,0	0,5
SPH 13		13	8	40	4	2,0 - 12,0	0,5
SPH 15	(203 E)	15	11	40	6	2,0 - 15,5	0,5
SPH 16		16	11	40	6	12,0 - 15,0	0,5
SPH 18	(218 E)	18	11	40	6	2,5 - 16,5	0,5
SPH 20	(225 E)	20	14	65	8	2,0 - 20,0	0,5
SPH 22		22	14	65	8	12,0 - 21,0	0,5
SPH 25	(222 E)	25	20	65	8	3,0 - 25,0	0,5
SPH 28	(227 E)	28	20	65	8	8,0 - 27,0	0,5
SPH 30		30	20	65	8	4,0 - 28,0	0,5
SPH 32		32	20	65	8	5,0 - 30,0	0,5
SPH 36		36	20	65	8	4,0 - 33,0	0,5

Hexagon and square bar feed collets in stock!
Further bar feed collets and bore diameters on request.
Quickly available!

BAR FEED COLLETS FOR INTERNAL CLAMPING

f. britsch



Order No.	ø P	ø D	L	ø-pitch
SPD 07	M4	07	37	1,0
SPD 10	7	10	40	1,0
SPD 12	8	12	40	1,0
SPD 15	11	15	40	1,0
SPD 18	11	18	40	1,0
SPD 20	14	20	65	1,0
SPD 22	14	22	65	1,0
SPD 25	20	25	65	1,0

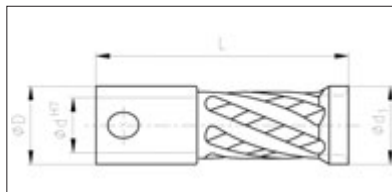
Bar feed collets for internal clamping are available for further bar feed collet types (IEMCA, CUCCHI, etc.)

Vulcanised available! BENEFIT -> Coolant oil can't escape.

NEW! Polymer bar feed collets for internal clamping on request!

LONGLIFE BAR FEED COLLETS

f. britsch



Order No.	Ø D	Ø d	L	Ø d ₁	Ø-pitch
SPH D L 07...	7	M 5	37	5,0 - 6,5	0,5
SPH D L 10...	10	7	40	7,0 - 8,5	0,5
SPH D L 11...	11	7	40	9,0 - 10,0	0,5
	11			8,0 / hexagon	-
SPH D L 12...	12	8	40	9,0 - 10,5	0,5
SPH D L 13...	13	8	40	11,0 - 12,0	0,5
	13			10,0 / hexagon	-
SPH D L 15...	15	11	40	11,0 - 14,0	0,5
SPH D L 16...	16	11	40	14,0 - 15,0	0,5
	16			13,0 / hexagon	-
SPH D L 17...	17	11	40	15,0 - 16,0	0,5
SPH D L 18...	18	11	40	12,0 - 17,0	0,5
SPH D L 19...	19	11	40	17,5 - 18,0	0,5
SPH D L 20...	20	14	65	15,0 - 19,0	0,5
SPH D L 21...	21	14	65	19,0 - 20,0	0,5
	21			17,0 / hexagon	-
SPH D L 22...	22	14	65	16,0 - 21,0	0,5
	22			17,0 / hexagon	-
SPH D L 23...	23	14	65	20,0 - 22,0	0,5
SPH D L 25...	25	20	65	20,0 - 24,0	0,5
SPH D L 26...	26	20	65	24,0 - 25,0	0,5
SPH D L 27...	27	20	65	24,0 - 26,0	0,5
SPH D L 28...	28	20	65	20,0 - 27,0	0,5
SPH D L 30...	30	20	65	25,0 - 29,0	0,5
SPH D L 31...	31	20	65	29,0 - 30,0	0,5
SPH D L 32...	32	20	65	25,0 - 31,0	0,5
	32			27,0 / hexagon	-
SPH D L 33...	33	20	65	30,0 - 32,0	0,5
SPH D L 36...	36	20	65	30,0 - 35,0	0,5
	36			30,0 / hexagon	-

Benefits:

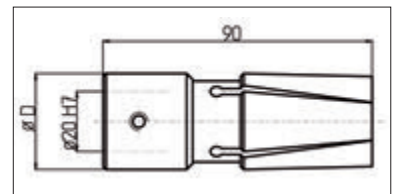
- The tightening of the material bar is often not necessary
- Very solid bar feed collet, thereby the risk of breakage is significantly lower
- All bar feed collets are field-tested
- The bar feed collets are extremely durable
- Almost constant clamping force over the entire speed range
- Suitable for profile material (hexagon, square...)

Further **LONGLIFE** bar feed collets and bore diameters on request.
Quickly available!

TURBO-BAR FEED COLLETS

f. britsch

Order No.	Ø D	Standard ø from - to	ø-pitch
SPHTS 25	25	4,0 - 24,0	0,5
SPHTS 30	30	5,0 - 28,0	0,5
SPHTS 32	32	4,0 - 30,0	0,5
SPHTS 34	34	6,0 - 32,0	0,5
SPHTS 36	36	6,0 - 34,0	0,5
SPHTS 38	38	10,0 - 36,0	0,5
SPHTS 40	40	7,0 - 38,0	0,5
SPHTS 42	42	6,0 - 40,0	0,5
SPHTS 45	45	15,0 - 43,0	0,5
SPHTS 50 with spring	50	15,0 - 48,0	0,5
SPHTS 60	60	20,0 - 58,0	0,5
SPHTS 63	63	25,0 - 60,0	0,5
SPHTS 65	65	20,0 - 63,0	0,5
SPHTS 80	80	40,0 - 74,0	1,0

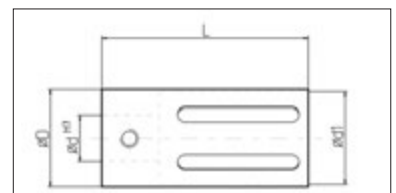


Also available in XT variation:
With defined clamping force

Also available in SF variation:
With spiral tension spring

TURBO-LONGLIFE-BAR FEED COLLETS

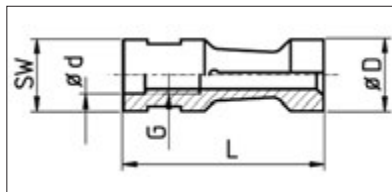
Order No.	Ø D	Ø d	L	Ø d ₁	ø-pitch
SPH TD L 25	25	20	90	18,0 - 24,0	0,5
30...	30	20	90	24,0 - 29,0	0,5
				24 / hexagon	-
32...	32	20	90	25,0 - 31,0	0,5
	32			22/24/27 / hexagon	-
33...	33	20	90	30,0 - 31,0	0,5
34...	34	20	90	30,0 - 33,0	0,5
36...	36	20	90	28,0 - 35,0	0,5
	36			30 / hexagon	-
38...	38	20	90	30,0 - 37,0	0,5
				32 / hexagon	-
42...	42	20	90	30,0 - 41,5	0,5
				32 / hexagon	-
45...	45	20	90	40,0 - 44,0	0,5
	45			36 / hexagon	-
50...	50	20	90	40,0 - 49,0	0,5
	50			41 / hexagon	-
60...	60	20	90	50,0 - 59,0	0,5
				46 / hexagon	-
65...	65	20	90	55,0 - 64,0	0,5
				46 / hexagon	-



Further TURBO-bar feed collets and TURBO-LONGLIFE bar feed collets and bore diameters on request. Quickly available!!

BAR FEED COLLETS IEMCA

f. britsch

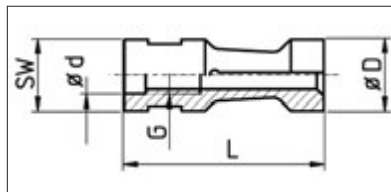


Order No.		Ø D	Thread	L	SW	Standard ø from - to	ø-pitch
SPHI07	2001 E	7,5	M5x0,5	40	6	1,5 - 6,5	0,1
SPHI10	2045 E	10	M6x0,75	40	8	2,0 - 9,0	0,1
SPHI12	2061 E	12	M7x0,75	42	10	3,0 - 11,0	0,1
SPHI15	2101 E	15	M8x1,0	42	13	4,0 - 14,0	0,1
SPHI16		16	M8x1,0	42	14	12,0 - 15,0	0,5
SPHI18		18	M8x1,0	42	14	12,5 - 16,5	0,5
SPHI20	2197 E	20	M10x1,0	59	17	4,0 - 18,5	0,1
SPHI23		23	M10x1,0	59	19	15,0 - 20,0	0,5
SPHI25	2289 E	25	M10x1,0	59	22	10,0 - 23,0	0,5
SPHI27	2316 E	27	M10x1,0	59	22	20,0 - 25,5	0,5
SPHI30		30	M10x1,0*	65	28	8,0 - 28,0	0,5
SPHI31		31	M10x1,0*	65	28	8,0 - 30,0	0,5
SPHI32		32	M10x1,0*	65	28	8,0 - 30,0	0,5
SPHI33		33	M10x1,0*	65	28	8,0 - 32,0	0,5
SPHI34		34	M10x1,0*	65	28	8,0 - 32,0	0,5
SPHI35		35	M25x1,5	65	30	20,0 - 33,0	0,5
SPHI40		40	M25x1,5	70	36	20,0 - 37,0	0,5
SPHI42		42	M25x1,5	70	36	20,0 - 40,0	0,5
SPHI46		46	M25x1,5	72	40	20,0 - 44,0	0,5
SPHI50		50	M25x1,5	80	46	43,0 - 48,0	0,5
SPHI52		52	M25x1,5	80	50	45,0 - 50,0	0,5
SPHI54		54	M25x1,5	80	50	47,0 - 52,0	0,5
SPHI55		55	M25x1,5	80	50	20,0 - 54,0	0,5
SPHI56		56	M25x1,5	80	50	20,0 - 54,0	0,5
SPHI58		58	M25x1,5	80	50	20,0 - 54,0	0,5
SPHI60		60	M25x1,5	80	55	20,0 - 57,0	0,5
SPHI65		65	M25x1,5	80	55	56,0 - 63,0	0,5
SPHI70		70	M25x1,5	80	55	60,0 - 68,0	0,5
SPHI75		75	M25x1,5	80	55	67,0 - 72,0	0,5

Further IEMCA bar feed collets and bore diameters on request.
Quickly available!

BAR FEED COLLETS IEMCA (EXTENDED VERSION)

f. britsch



Order No.	Ø D	Thread	L	SW	Standard ø from - to	ø-pitch
SPHIL29	29	M17x1	80	27	5,0 - 27,0	0,5
SPHIL30	30	M17x1	80	27	5,0 - 28,0	0,5
SPHIL32	32	M25x1,5	80	30	5,0 - 30,0	0,5
SPHIL34	34	M25x1,5	80	30	20,0 - 32,0	0,5
SPHIL36	36	M25x1,5	80	30	20,0 - 34,0	0,5
SPHIL38	38	M25x1,5	80	36	20,0 - 36,0	0,5
SPHIL40	40	M25x1,5	80	36	10,0 - 38,0	0,5
SPHIL42	42	M25x1,5	80	36	10,0 - 40,0	0,5
SPHIL44	44	M25x1,5	80	41	38,0 - 42,0	0,5
SPHIL46	46	M25x1,5	80	41	39,0 - 44,0	0,5
SPHIL48	48	M25x1,5	80	46	40,0 - 46,0	0,5

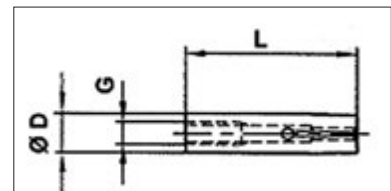
**Further IEMCA bar feed collets and bore diameters on request.
Quickly available!**

BAR FEED COLLETS LNS TRYTON AND CUCCHI

f. britsch

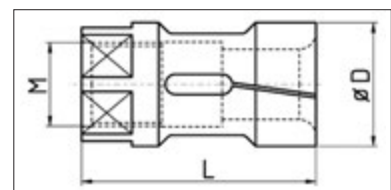
BAR FEED COLLETS LNS TRYTON

Order No.	Ø D	L	Thread	Standard ø from - to	ø-pitch
SPH LNS 06	6	30	M 4	0,8 - 5,0	0,1
SPH LNS 07	7	30	M 4	1,0 - 6,35	0,1
SPH LNS 10	10	30	M 5	1,5 - 9,0	0,1
SPH LNS 12	12	30	M 6	2,0 - 11,0	0,1
SPH LNS 125	12,5	30	M 6	2,0 - 12,0	0,1
SPH LNS 165	16,5	35	M 8	3,0 - 15,0	0,1
SPH LNS 17	17	35	M 10	3,0 - 15,5	0,1
SPH LNS 20	20	35	M 10	3,0 - 18,5	0,1
SPH LNS 22	22	35	M 10	3,0 - 20,5	0,1
SPH LNS 25	25	35	M 10	5,0 - 23,5	0,1
SPH LNS 30	30	35	M 10	6,0 - 28,5	0,1
SPH LNS 32	32	35	M 10	6,0 - 30,5	0,1



BAR FEED COLLETS CUCCHI

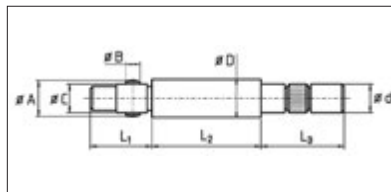
Order No.	Ø D	L	Thread	Standard ø
SPH CUCCHI 10	10	52	M 6 x 0,75	on request
SPH CUCCHI 12	12	52	M 7 x 0,75	on request
SPH CUCCHI 14	14	52	M 8 x 1	on request
SPH CUCCHI 15	15	52	M 8 x 1	on request
SPH CUCCHI 16	16	52	M 8 x 1	on request
SPH CUCCHI 18	18	60	M 10 x 1	on request
SPH CUCCHI 19	19	60	M 10 x 1	on request
SPH CUCCHI 25	25	60	M 14 x 1	on request
SPH CUCCHI 30	30	65	M 18 x 1,5	on request
SPH CUCCHI 40	40	70	M 25 x 1,5	on request



Further LNS and CUCCHI bar feed collets and bore diameters on request.
Quickly available!

REVOLVING ENDS FOR BAR LOADERS

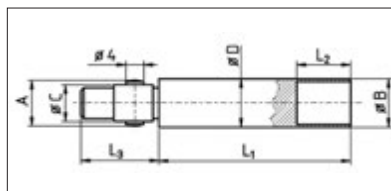
f. britsch



FMB, HAGENUK, AB D15 TRAUB, SYMCO, IEMCA

Cross-bolts for revolving ends available!

Order No.	Ø d	Ø D	A	B	C	L ₁	L ₂	L ₃
SPHLD 10 H	8	10	9,8	4	7	24	45,5	31
SPHLD 12 H	8	12	11,8	4	8	24	45,5	31
SPHLD 13 H	8	13	14,8	6	11	24	50	31
SPHLD 15 H/T	12	15	14,8	6	11	24	50	31
SPHLD 16 H/T	12	16	14,8	6	11	24	50	31
SPHLD 18 H/T	12	18	14,8	6	11	24	50	31
SPHLD 20 H/T	17	20	19,8	8	14	40	50	31
SPHLD 22 H/T	17	22	19,8	8	14	40	50	31
SPHLD 25 H/T	20	25	24,8	8	20	40	50	31
SPHLD 28 H/T	20	28	27,8	8	20	40	50	31
SPHLD 30 H/T	20	30	29,8	8	20	40	50	31
SPHLD 32 H/T	20	32	31,8	8	20	42	47	31
SPHLD 36 H/T	20	36	24,8	8	20	42	47	31

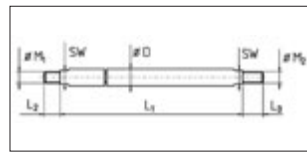


TRAUB

Order No.	D	A	C	B	L ₃	L ₁	L ₂
SPHLD 10 T	10	9,9	7	9	24	63,5	18
SPHLD 12 T	12	11,9	8	11	24	63,5	18

REVOLVING ENDS FOR BAR LOADERS

f.britsch



GAUTHIER / IEMCA / LNS

* Standard configuration for channel D7 and D5

Order No.	D	M ₁	M ₂	SW	L ₁	L ₂	L ₃	Magazin
SPHLD 05 GS	5,0	M4	M4	4	7	73	11	Gauthier / IEMCA
SPHLD 05 G	5,5	M4	M4	4	7	73	11	* Gauthier / IEMCA
SPHLD 07 GS	7,0	M5	M5	6	7	79	11	Gauthier
SPHLD 07 G	7,5	M5	M5	6	7	79	11	* Gauthier
SPHLD 07 S LNS	7,0	M4	M5	6	8	115	11	LNS Mini Sprint
SPHLD 07 LNS	7,5	M4	M5	6	8	115	11	* LNS Mini Sprint
SPHLD 12 LNS	12	M6	M6	9	overall length 72 mm			LNS Mini Sprint

IEMCA

Order No.	D	L	F	d	Figure
SPHLD 07 I	7,5	126	M6 x 0,75	M5 x 0,5	1
SPHLD 10 I	10	113	M8 x 1	M6 x 0,75	2
SPHLD 12 I	12	116	M10 x 1	M7 x 0,75	2
SPHLD 15 I	15	121	M12 x 1,5	M8 x 1	2
SPHLD 20 I	20	133	M14 x 1,5	M10 x 1	2
SPHLD 25 I	25	133	M14 x 1,5	M10 x 1	2
SPHLD 30 I	30	135	M14 x 1,5	M10 x 1	2

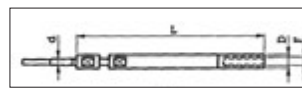


Figure 1

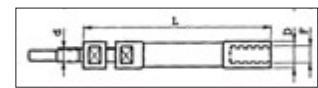
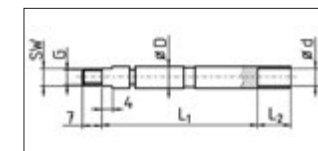


Figure 2

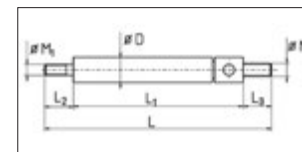
TRAUB

Order No.	∅ D	G	SW	L ₁	L ₂	∅ d
SPHLD 05 T	5	M4	4	56	12	4,5
SPHLD 07 T	7	M5	6	59	15	6,5



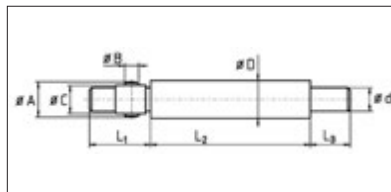
BECHLER

Order No.	∅ D	M ₁	M ₂	L ₁	L
ERB0760	7	M5	M4	48	60
SPHLD 10 B 2	10	M6	M5	56	84
SPHLD 10 B 1	10	M6	M5	68	96



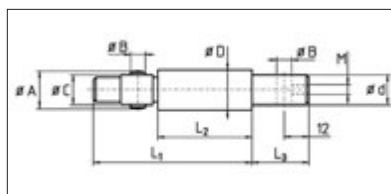
REVOLVING ENDS FOR BAR LOADERS

f. britsch



TORNOS ROBOBAR

Order No.	Ø d	Ø D	A	B	C	L ₁	L ₂	L ₃
SPHLD ROB 055	M 3	5,5	M 4	-	-	22	61	10
SPHLD ROB 075	5	7,5	M 5	-	-	20	64	16
SPHLD ROB 105	8	10,5	9,8	4	7	27	73	16
SPHLD ROB 120	8	12	11,8	4	8	26	73	16
SPHLD ROB 160	10	16	14,8	6	11	28	117	16
SPHLD ROB 180	12	18	14,8	6	11	25	115	16
SPHLD ROB 205	14	20,5	19,8	8	14	42	110	20
SPHLD ROB 250	20	25	24,8	8	20	44	114	22
SPHLD ROB 260	20	26	24,8	8	20	44	114	22

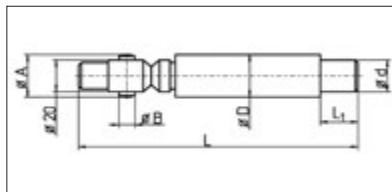


LNS MINI-SPRINT S2

Order No.	Ø d	Ø D	Ø A	Ø B	Ø C	L ₁	L ₃	M
SPH 10 LNS	8	10	10	4	7	65	30	M 4
SPH 12 LNS	8	12	12	4	8	65	30	-
SPH 15 LNS	12	15	15	6	11	66	30	M 5
SPH 18 LNS	12	18	18	6	11	66	30	-
SPH 20 LNS	17	20	20	8	14	81	30	M 8
SPH 25 LNS	20	25	25	8	20	85,5	30	M 8
SPH 36 LNS	30	36	36	8/--	20	158	40	-
SPH 50 LNS	42	50	--	--	20	158	50	-

REVOLVING ENDS FOR TURBO BAR LOADERS

f.britsch



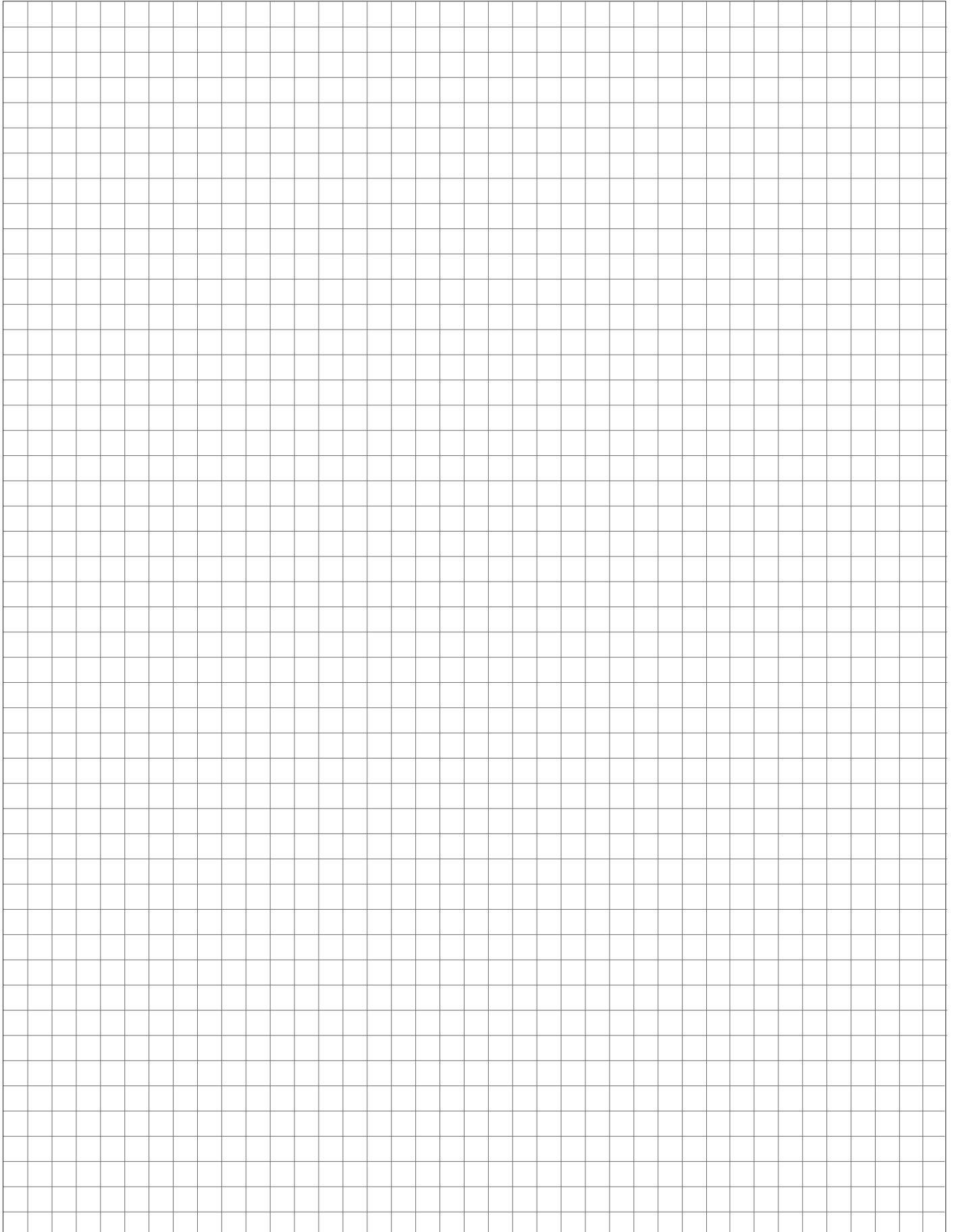
FMB BAR LOADERS

Order No.	Ø d	Ø D	A	B	L ₁	L
SPHLDTS 25	20	25	24,8	8	40	197
SPHLDTS 28	20	28	25,8	8	40	197
SPHLDTS 30	25	30	25,8	8	40	197
SPHLDTS 32	25	32	31	8	40	197
SPHLDTS 34	30	34	31	8	40	197
SPHLDTS 36	30	36	35	8	40	207
SPHLDTS 38	30	38	-	-	40	207
SPHLDTS 42	33	42	-	-	50	207
SPHLDTS 50	42	50	-	-	50	207
SPHLDTS 60	51	60	-	-	75	232
SPHLDTS 63	51	63	-	-	75	232
SPHLDTS 65	51	65	-	-	75	232



TORNOS BAR LOADERS

Order No.	Ø d	Ø D	A	B	L ₁	L
SPHLDTR 32	22	32	31	8	30	192
SPHLDTR 36	25	36	35	8	30	192





CUTTING TOOLS



TOOL HOLDERS FOR CUTTING TOOLS



PCM - SPECIAL TOOLS



BIMU-INSERTS



IFANGER MICROTURNT



MEASURING EQUIPMENT

f.britsch
everything. always. quick.



tools | machines

Friedrich Britsch GmbH & Co. KG
Mülleracker 6
75177 Pforzheim
Germany

Tel: +49 7231 9365-0
Fax: +49 7231 9365-30
fbritsch@f-britsch.com

www.f-britsch.com/en
www.f-britsch.com/en/shop