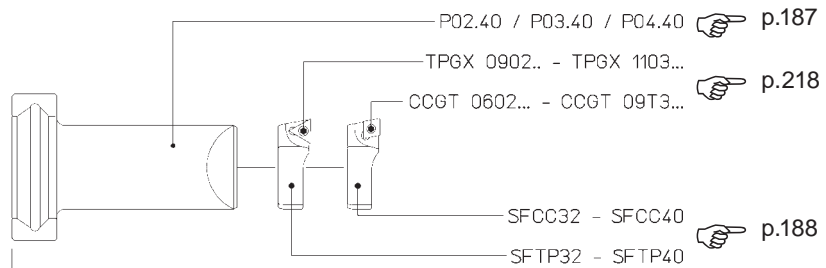


TRM 80/125

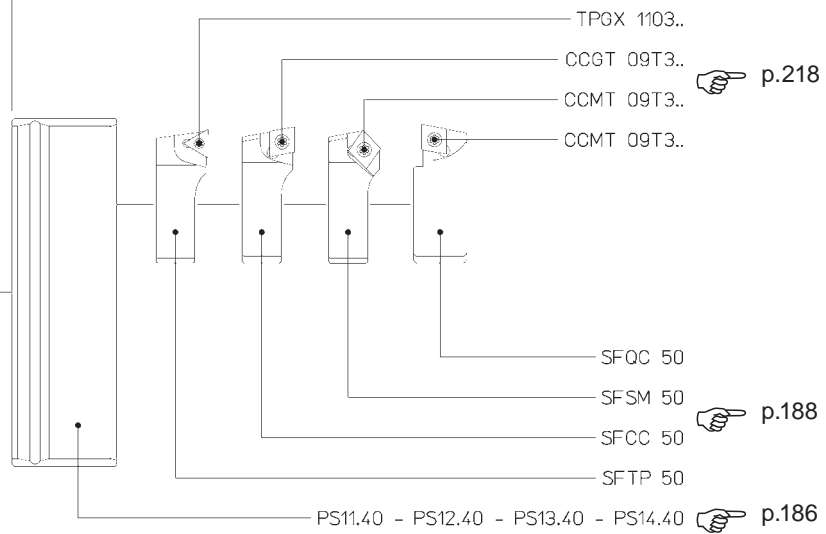
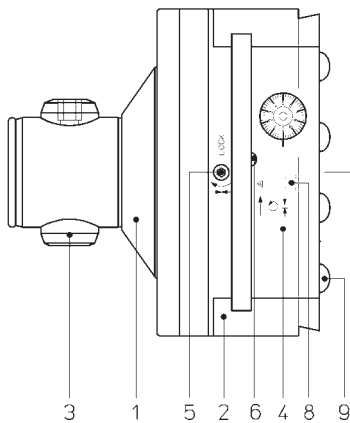
Ø 36 ~ 500



Ø 36 ~ 138
p. 137



Ø 135 ~ 500
p. 138 - 139



COMPONENTS

1. Body
2. Slide toolholder
3. Expanding radial pin
4. Micrometric vernier scale
5. Slide clamp screw
6. Coolant outlet
8. Oiler
9. Toolholder lock screw

BAUTEILE

1. Körper
2. Werkzeugschlitten
3. Spreizbolzen
4. Mikrometrischer Nonius
5. Schlittenklemmschraube
6. Kühlmittelaustrittloch
8. Schmiernippel
9. Werkzeughalter-spanschrauben

COMPONENTES

1. Cuerpo
2. Guía portaherramientas
3. Perno radial expansible
4. Nonio micrométrico
5. Tornillo bloqueo guía
6. Agujero salida refrigerante
8. Engrasador
9. Tornillos bloqueo portaherramientas

COMPOSANTS

1. Corps
2. Coulisseau
3. Tige radial expansible
4. Vernier micrométrique
5. Vis blocage coulisseau
6. Sortie du liquide d'arrosage
8. Graisseur
9. Vis blocage porte-outils

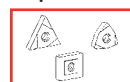
COMPONENTI

1. Corpo
2. Slitta portautensili
3. Perno radiale espandibile
4. Nonio micrometrico
5. Vite bloccaggio slitta
6. Uscita refrigerante
8. Oliatore
9. Vite bloccaggio portautensile

p. 260

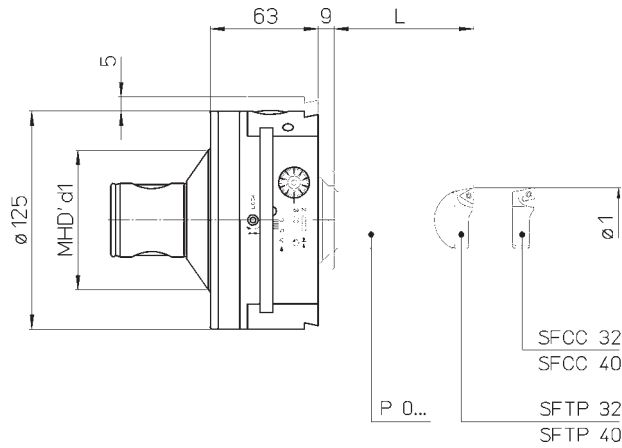
p. 218-219



p. 242

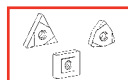


TRM 80/125

Ø 36 ~ 138



REF.	CODE	MHD'd ₁	Ø ₁	L	P 0...	SF..			kg
TRM 80/125	45 50 080 0125 0	80	36 ~ 125	80	P 02.40	SFTP 32 SFCC 32	•	•	5.5
				125	P 03.40				
				200	P 04.40				
			50 ~ 138	80	P 02.40	SFTP 40 SFCC 40	•	•	
				125	P 03.40				
				200	P 04.40				



Testarossa

Testarossa

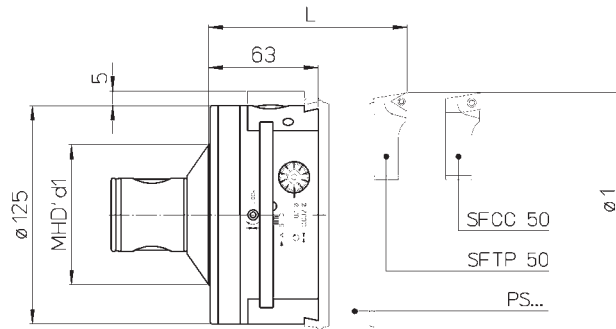
Testarossa

Testarossa

Testarossa

TRM 80/125

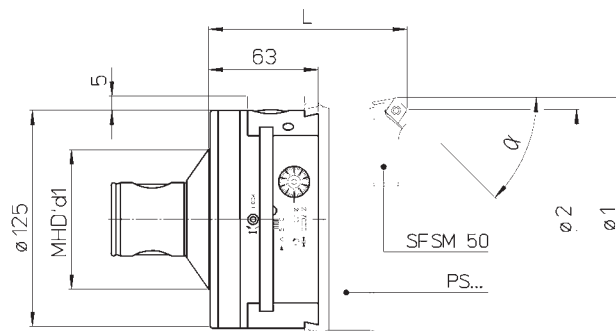
Ø 135 ~ 500



REF.	CODE	MHD'd ₁	Ø ₁	L	PS..	SF..	△	□	kg
TRM 80/125	45 50 080 0125 0	80	135 ~ 210	115	PS 11.40	SFTP 50 SFCC 50	•	•	5.5
			205 ~ 310		PS 12.40				
			305 ~ 410		PS 13.40				
			405 ~ 500		PS 14.40				

TRM 80/125

Ø 135 ~ 500

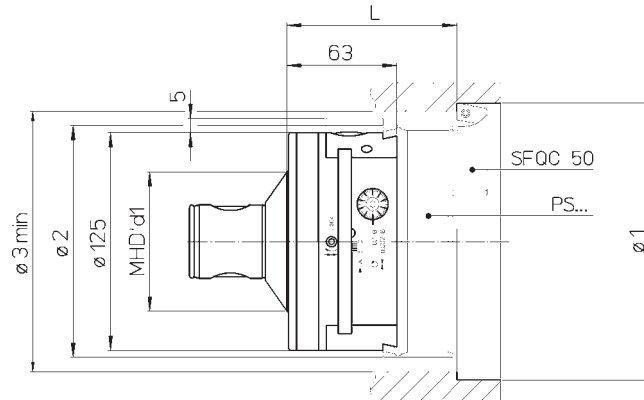


REF.	CODE	MHD'd ₁	Ø ₁	Ø ₂	α	L	PS..	SFSM	□	kg
TRM 80/125	45 50 080 0125 0	80	135 ~ 210	130 ~ 205	15°	115	PS 11.40	SFSM 50-15° SFSM 50-30° SFSM 50-45°	•	5.5
				125.5 ~ 200.5	30°					
				121.5 ~ 196.5	45°					
			205 ~ 310	200 ~ 305	15°		PS 12.40			
				195.5 ~ 300.5	30°					
				191.5 ~ 296.5	45°					
			305 ~ 410	300 ~ 405	15°		PS 13.40			
				295.5 ~ 400.5	30°					
				291.5 ~ 396.5	45°					
			405 ~ 500	400 ~ 495	15°		PS 14.40			
				395.5 ~ 490.5	30°					
				391.5 ~ 486.5	45°					



TRM 80/125

Ø 140 ~ 502



$$\text{Ø}3 \text{ min} = (\text{Ø}1 + \text{Ø}2 + 1) : 2$$

REF.	CODE	MHD'd1	Ø ₁	Ø ₂	L	PS..	SFQC		kg
TRM 80/125	45 50 080 0125 0	80	140 ~ 212	133	98	PS 11.40	SFQC 50	•	5.5
			210 ~ 312	200		PS 12.40			
			310 ~ 410	300		PS 13.40			
			410 ~ 502	400		PS 14.40			

