

Testarossa

Testarossa

Testarossa

Testarossa

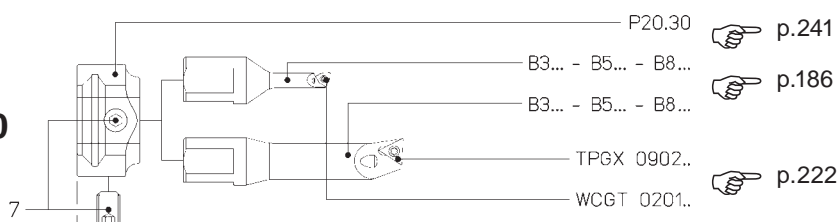
Testarossa



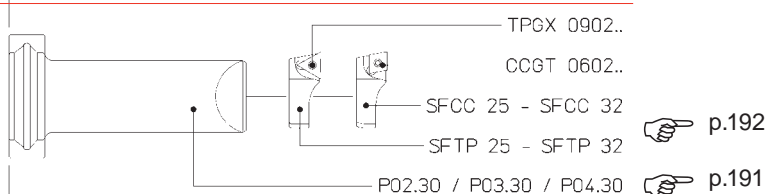
TRM 50/80
TRM 80/80

Ø 6 ~ 160

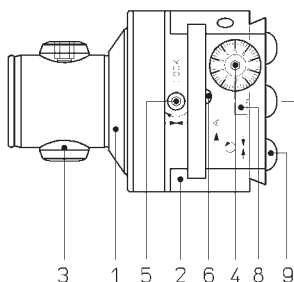
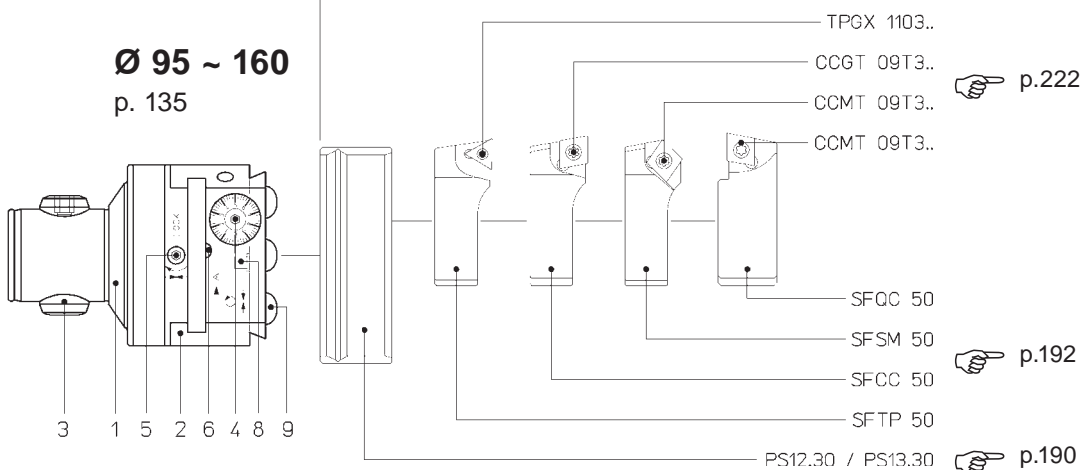
Ø 6 ~ 30
p. 133



Ø 30 ~ 95
p. 134



Ø 95 ~ 160
p. 135



132

COMPONENTS

1. Body
2. Slide toolholder
3. Expanding radial pin
4. Micrometric vernier scale
5. Slide clamp screw
6. Coolant outlet
7. Tool clamp screw
8. Oiler
9. Toolholder lock screw

BAUTEILE

1. Körper
2. Werkzeugschlitten
3. Spreizbolzen
4. Mikrometrischer Nonius
5. Schlittenklemmschraube
6. Kühlmittelaustrittloch
7. Werkzeugklemmschraube
8. Schmiernippel Bohrstangen.
9. Werkzeughalter-spanschrauben

COMPONENTES

1. Cuerpo
2. Guía portaherramientas
3. Perno radial expansible
4. Nonio micrométrico
5. Tornillo bloqueo guía
6. Agujero salida refrigerante
7. Tornillo bloqueo herramientas
8. Engrasador
9. Tornillos bloqueo portaherramientas

COMPOSANTS

1. Corps
2. Coulisseau
3. Tige radial expansible
4. Vernier micrométrique
5. Vis blocage coulisseau
6. Sortie du liquide d'arrosage
7. Vis blocage outil
8. Graisseur
9. Vis blocage porte-outils

COMPONENTI

1. Corpo
2. Slitta portautensili
3. Perno radiale espandibile
4. Nonio micrometrico
5. Vite bloccaggio slitta
6. Uscita refrigerante
7. Vite bloccaggio utensili
8. Oliatore
9. Viti bloccaggio portautensili

p. 260

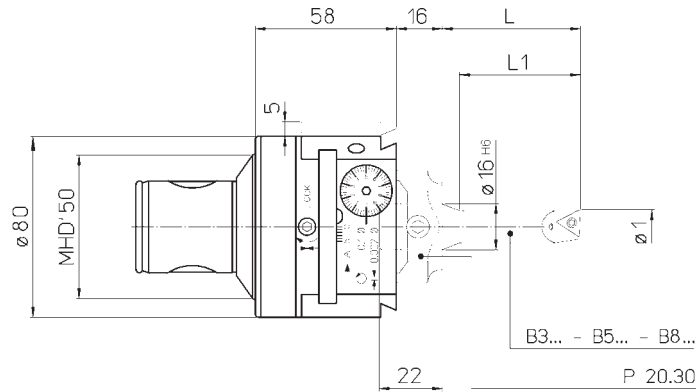
p. 218-219

p. 242

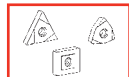


TRM 50/80 TRM 80/80

Ø 6 ~ 30



REF.	CODE	MHD'd ₁	Ø ₁	B...	L	L ₁			kg	
TRM 50/80 TRM 80/80	45 50 050 0080 0 45 50 080 0080 0	50 80	6 ~ 8	B3.06	29	21	•	—	2 2.5	
				B5.06	36	—	•	—		
				B8.06	45	—	•	—		
			8 ~ 10	B3.08	36	28	•	—		
				B5.08	48	—	•	—		
				B8.08	60	—	•	—		
			10 ~ 12	B3.10	43	35	—	•		
				B5.10	60	—	—	•		
				B8.10	75	—	—	•		
			11 ~ 13	B3.11	48	40	—	•		
				B3.12	48	42	—	•		
				B5.12	72	—	—	•		
			12 ~ 14	B8.12	90	—	—	•		
				14 ~ 16	B3.14	52	50	—		•
					B5.14	84	—	—		•
			B8.14		105	—	—	•		
			16 ~ 18	B3.16	58	50	—	•		
				B5.16	96	—	—	•		
B8.16	120	—		—	•					
18 ~ 22	B3.18	63	—	—	•					
22 ~ 30	B3.22	68	—	—	•					



Testarossa

Testarossa

Testarossa

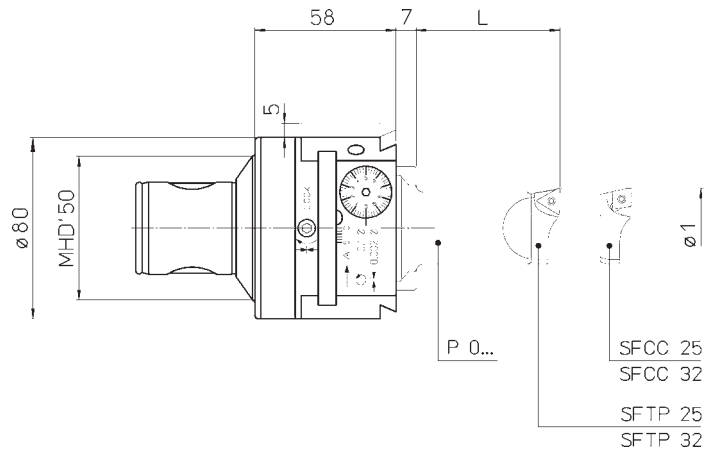
Testarossa

Testarossa

TRM 50/80

TRM 80/80

Ø 30 ~ 95



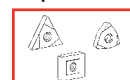
REF.	CODE	MHD'd ₁	Ø ₁	L	P 0...	SF..			kg
TRM 50/80 TRM 80/80	45 50 050 0080 0 45 50 080 0080 0	50	30 ~ 83	50	P 02.30	SFTP 25 SFCC 25	•	•	2
				80	P 03.30				
				125	P 04.30				
		80	35.5 ~ 95	50	P 02.30	SFTP 32 SFCC 32	•	•	2.5
				80	P 03.30				
				125	P 04.30				

134

p. 260

p. 218-219

p. 242



TRM 50/80
TRM 80/80
Ø 95~ 160

REF.	CODE	MHD'd1	Ø1	L	PS..	SF..	⚠	Ⓚ	kg
TRM 50/80	45 50 050 0080 0	50	95 ~ 140	96.5	PS 12.30	SFTP 50	•	•	2
TRM 80/80	45 50 080 0080 0	80	140 ~ 160		PS 13.30	SFCC 50	•	•	2.5

TRM 50/80
TRM 80/80
Ø 95 ~ 160

REF.	CODE	MHD'd1	Ø1	Ø2	α	L	PS..	SF5M	Ⓚ	kg
TRM 50/80 TRM 80/80	45 50 050 0080 0 45 50 080 0080 0	50 80	95 ~ 140 140 ~ 160	90 ~ 135	15°	96.5	PS 12.30 PS 13.30	SF5M 50-15° SF5M 50-30° SF5M 50-45°	•	2 2.5
				85.5 ~ 130.5	30°					
				81.5 ~ 126.5	45°					
				135 ~ 155	15°					
				130 ~ 150	30°					
				126.5 ~ 146.5	45°					

TRM 50/80
TRM 80/80
Ø 100 ~ 162

ø3 min = (ø1+ø2+1) : 2

REF.	CODE	MHD'd1	Ø1	Ø2	L	PS..	SFQC	Ⓚ	kg
TRM 50/80	45 50 050 0080 0	50	100 ~ 142	93	79.5	PS 12.30	SFQC 50	•	2
TRM 80/80	45 50 080 0080 0	80	142 ~ 162	135		PS 13.30			

