

Testarossa

Testarossa

Testarossa

Testarossa

Testarossa

TRM 50

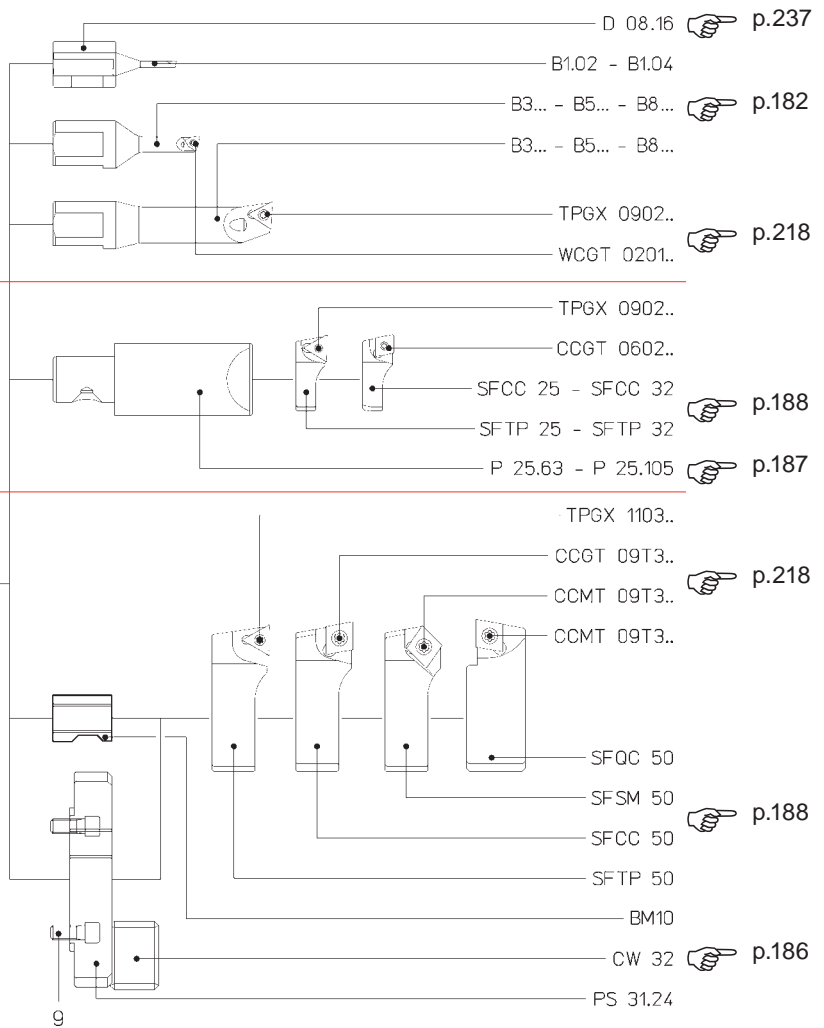
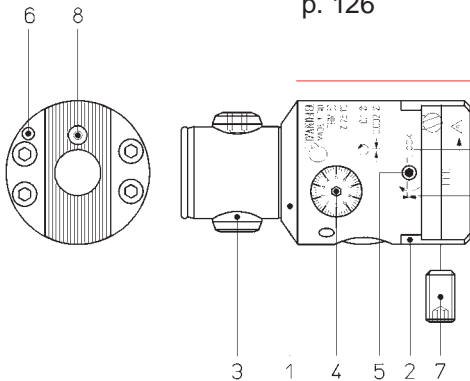
Ø 2.5 ~ 108



Ø 2.5 ~ 30
p. 125

Ø 28 ~ 54
p. 126

Ø 54 ~ 108
p. 127



COMPONENTS

1. Body
2. Slide toolholder
3. Expanding radial pin
4. Micrometric vernier scale
5. Slide clamp screw
6. Coolant outlet
7. Tool clamp screw
8. Oiler
9. Toolholder lock screw

BAUTEILE

1. Körper
2. Werkzeugschlitten
3. Spreizbolzen
4. Mikrometrischer Nonius
5. Schlittenklemmschraube
6. Kühlmittelaustrittloch
7. Werkzeugklemmschraube
8. Schmiernippel
9. Werkzeughalter-spanschrauben

COMPONENTES

1. Cuerpo
2. Guía portaherramientas
3. Perno radial expansible
4. Nonio micrométrico
5. Tornillo bloqueo guía
6. Agujero salida refrigerante
7. Tornillo bloqueo herramientas
8. Engrasador
9. Tornillos bloqueo portaherramientas

COMPOSANTS

1. Corps
2. Coulisseau
3. Tige radial expansible
4. Vernier micrométrique
5. Vis blocage coulisseau
6. Sortie du liquide d'arrosage
7. Vis blocage outil
8. Graisseur
9. Vis blocage porte-outils

COMPONENTI

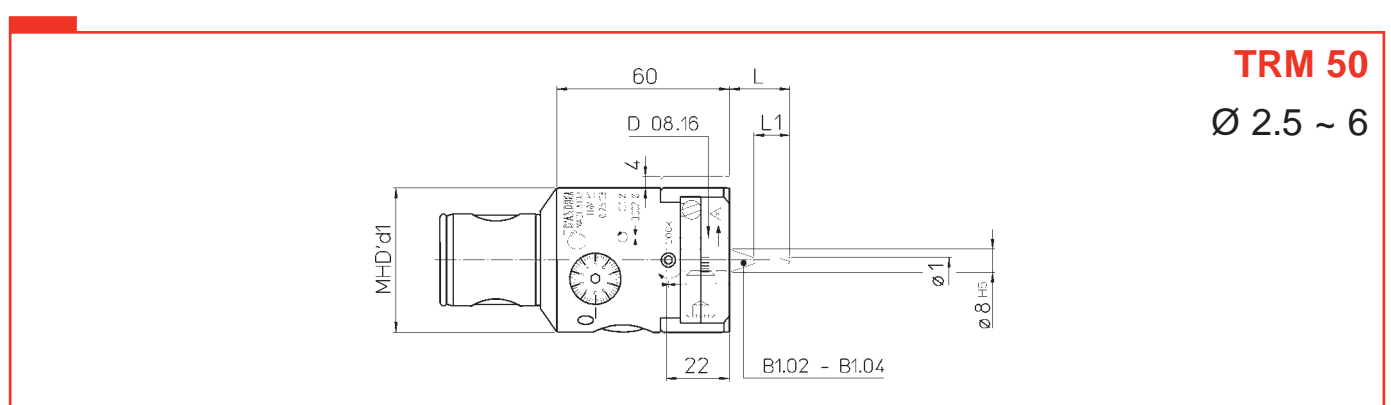
1. Corpo
2. Slitta portautensili
3. Perno radiale espandibile
4. Nonio micrometrico
5. Vite bloccaggio slitta
6. Ugello uscita refrigerante
7. Vite bloccaggio utensili
8. Oliatore
9. Viti bloccaggio portautensili

p. 260

p. 218-219

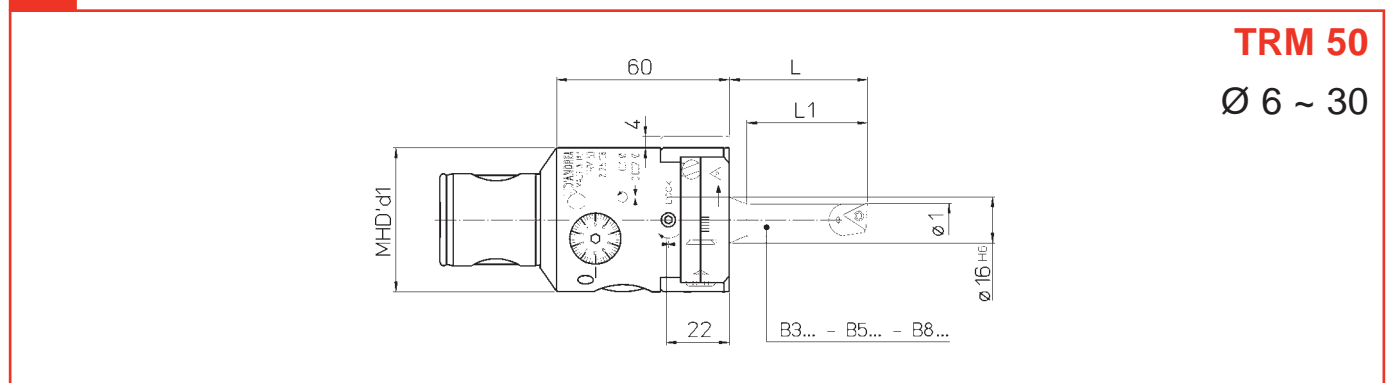
p. 242





TRM 50
Ø 2.5 ~ 6

REF.	CODE	MHD'd1	Ø ₁	B...	L	L ₁	kg
TRM 50	45 50 050 0050 0	50	2.5 ~ 4	B1.02	21	12.5	1
			4 ~ 6	B1.04	24	-	



TRM 50
Ø 6 ~ 30

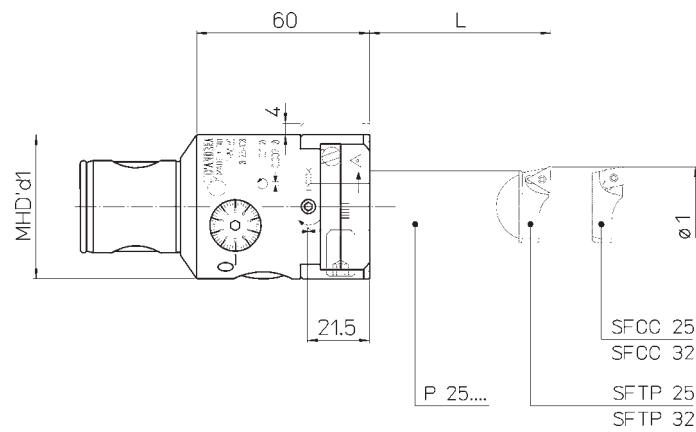
REF.	CODE	MHD'd1	Ø ₁	B...	L	L ₁			kg
TRM 50	45 50 050 0050 0	50	6 ~ 8	B3.06	29	21	•	-	1
				B5.06	36	-	•	-	
				B8.06	45	-	•	-	
			8 ~ 10	B3.08	36	28	•	-	
				B5.08	48	-	•	-	
				B8.08	60	-	•	-	
			10 ~ 12	B3.10	43	35	-	•	
				B5.10	60	-	-	•	
				B8.10	75	-	-	•	
			11 ~ 13	B3.11	48	40	-	•	
				B3.12	48	42	-	•	
				B5.12	72	-	-	•	
			12 ~ 14	B8.12	90	-	-	•	
				B3.14	52	50	-	•	
				B5.14	84	-	-	•	
			14 ~ 16	B8.14	105	-	-	•	
B3.16	58	50		-	•				
B5.16	96	-		-	•				
16 ~ 18	B8.16	120	-	-	•				
	B3.18	63	-	-	•				
18 ~ 22	B3.18	63	-	-	•				
22 ~ 30	B3.22	68	-	-	•				



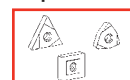
125

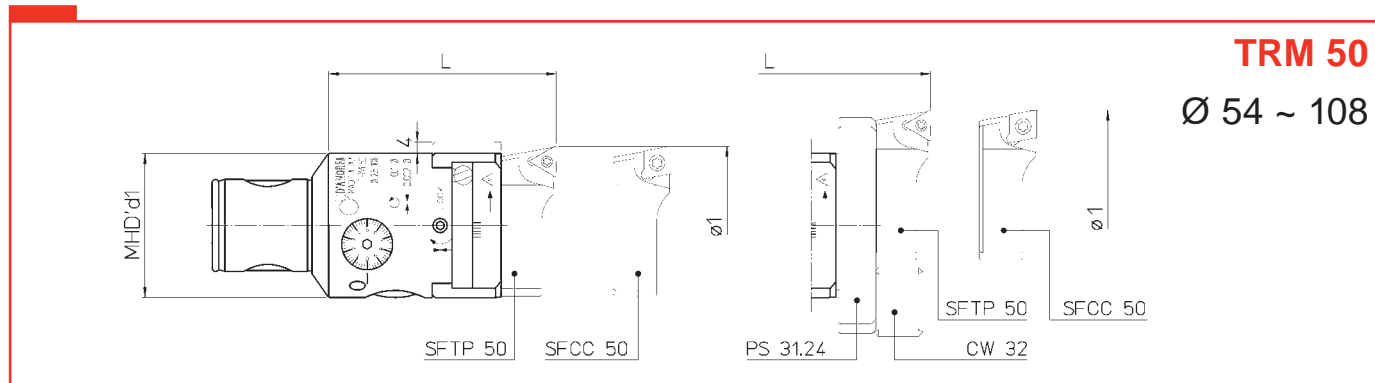
TRM 50

Ø 28 ~ 54



REF.	CODE	MHD'd ₁	Ø ₁	L	P 25..	SF..	△	□	kg
TRM 50	45 50 050 005 0 0	50	28 ~ 42	63	P 25.63	SFTP 25	•	•	1
				105	P 25.105	SFCC 25	•	•	
			36 ~ 54	63	P 25.63	SFTP 32	•	•	
				105	P 25.105	SFCC 32	•	•	

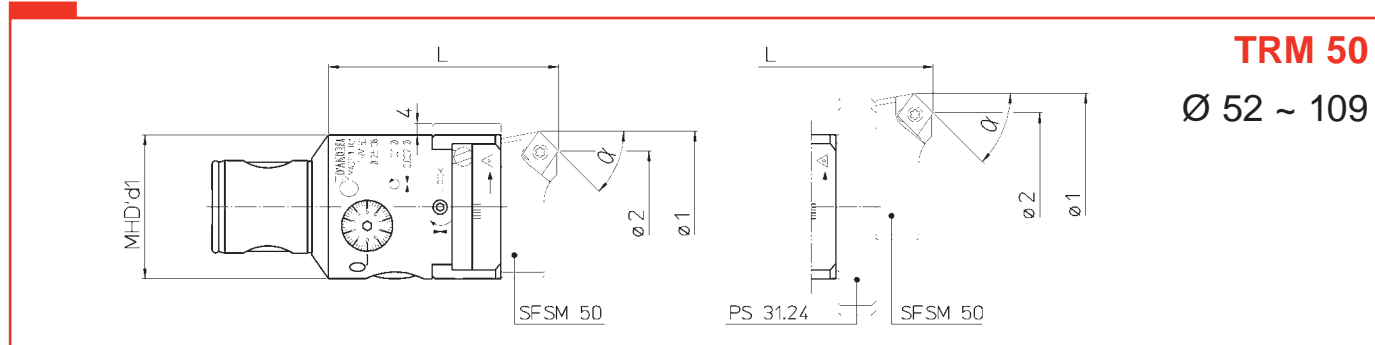




TRM 50

Ø 54 ~ 108

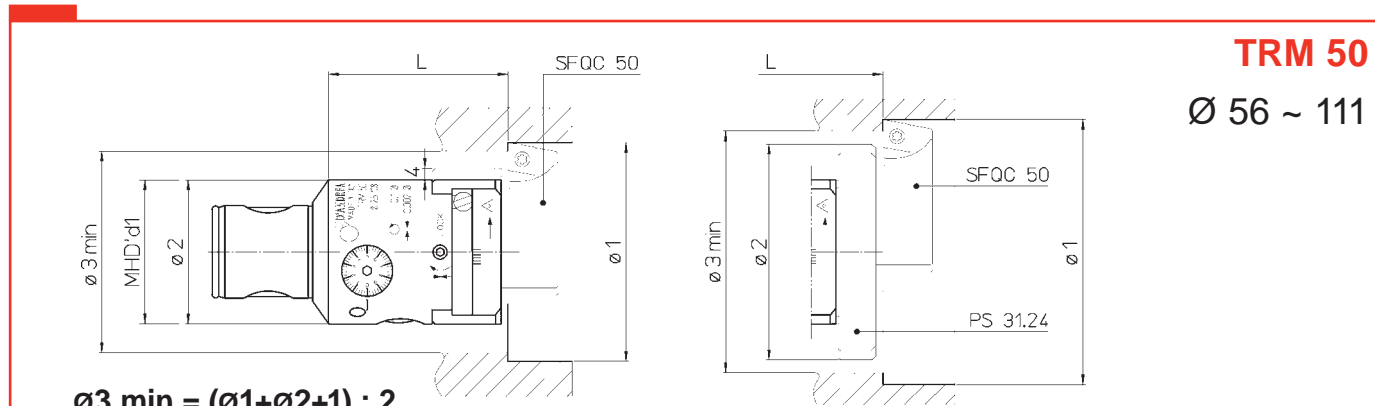
REF.	CODE	MHD'd ₁	Ø ₁	L	PS	SF..			kg
TRM 50	45 50 050 0050 0	50	54 ~ 84	79	-	SFTP 50 SFCC 50	•	•	1
			80 ~ 108	93	PS 31.24				
			92 ~ 108	PS 31.24+CW32					



TRM 50

Ø 52 ~ 109

REF.	CODE	MHD'd ₁	Ø ₁	Ø ₂	α	L	PS	SFSM		kg
TRM 50	45 50 050 0050 0	50	52 ~ 84	47.5 ~ 79.5	15°	79	-	SFSM 50-15° SFSM 50-30° SFSM 50-45°	•	1
				43 ~ 74.5	30°					
				39 ~ 71.5	45°					
			77 ~ 109	72 ~ 104	15°	93	PS 31.24			
				67.5 ~ 99	30°					
				63.5 ~ 95	45°					



TRM 50

Ø 56 ~ 111

$\text{ø}3 \text{ min} = (\text{ø}1 + \text{ø}2 + 1) : 2$

REF.	CODE	MHD'd ₁	Ø ₁	Ø ₂	L	PS	SFQC		kg
TRM 50	45 50 050 0050 0	50	56 ~ 87	50	62	-	SFQC 50	•	1
			81 ~ 111	75	76	PS 31.24			

