

Testarossa

Testarossa

Testarossa

Testarossa

Testarossa

TRC 50

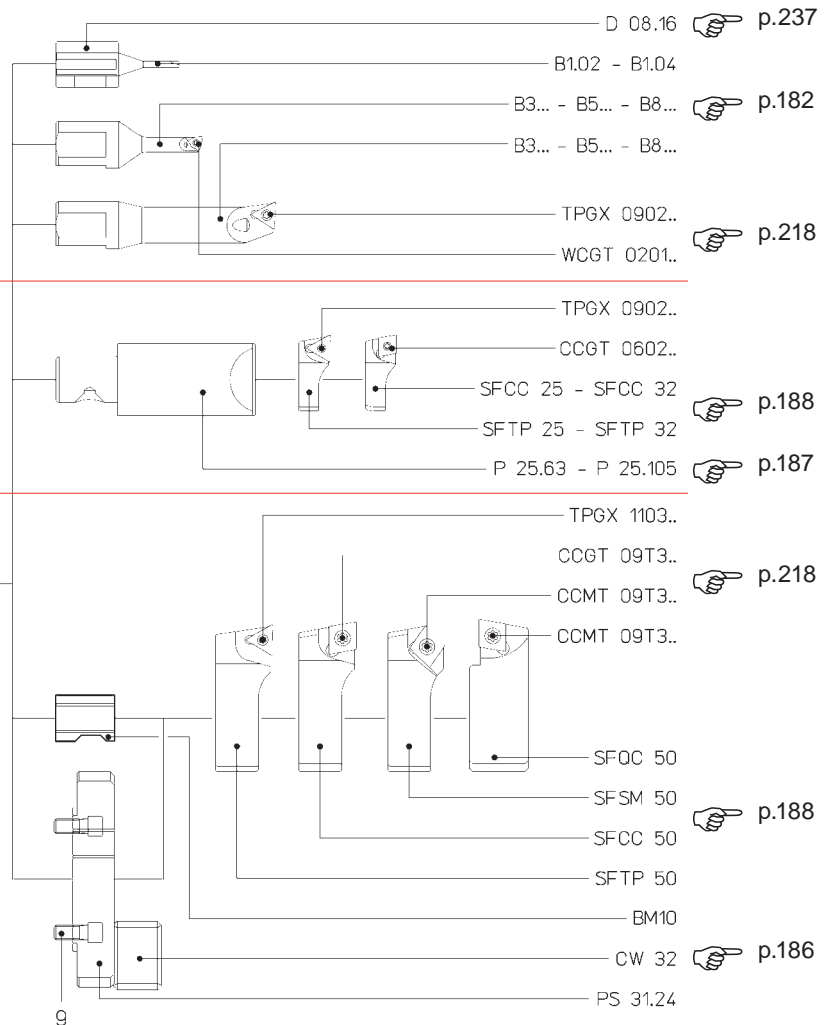
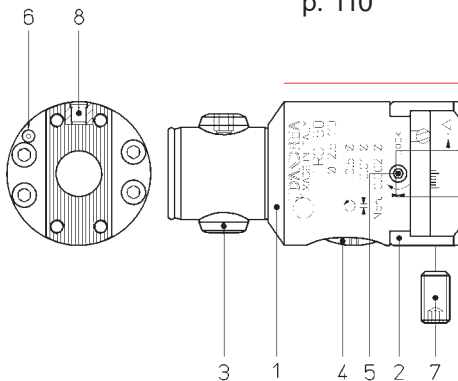
Ø 2.5 ~ 110



Ø 2.5 ~ 30
p. 109

Ø 28 ~ 56
p. 110

Ø 54 ~ 110
p. 111



COMPONENTS

1. Body
2. Slide toolholder
3. Expanding radial pin
4. Micrometric vernier scale
5. Slide clamp screw
6. Coolant outlet
7. Tool clamp screw
8. Oiler
9. Toolholder lock screw

BAUTEILE

1. Körper
2. Werkzeugschlitten
3. Spreizbolzen
4. Mikrometrischer Nonius
5. Schlittenklemmschraube
6. Kühlmittelaustrittloch
7. Werkzeugklemmschraube
8. Schmiernippel
9. Werkzeughalter-
spannschrauben

COMPONENTES

1. Cuerpo
2. Guía portaherramientas
3. Perno radial expansible
4. Nonio micrométrico
5. Tornillo bloqueo guía
6. Agujero salida refrigerante
7. Tornillo bloqueo
herramientas
8. Engrasador
9. Tornillos bloqueo
portaherramientas

COMPOSANTS

1. Corps
2. Coulisseau
3. Tige radial expansible
4. Vernier micrométrique
5. Vis blocage coulisseau
6. Sortie du liquide d'arrosage
7. Vis blocage outil
8. Graisseur
9. Vis blocage
porte-outils

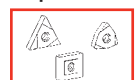
COMPONENTI

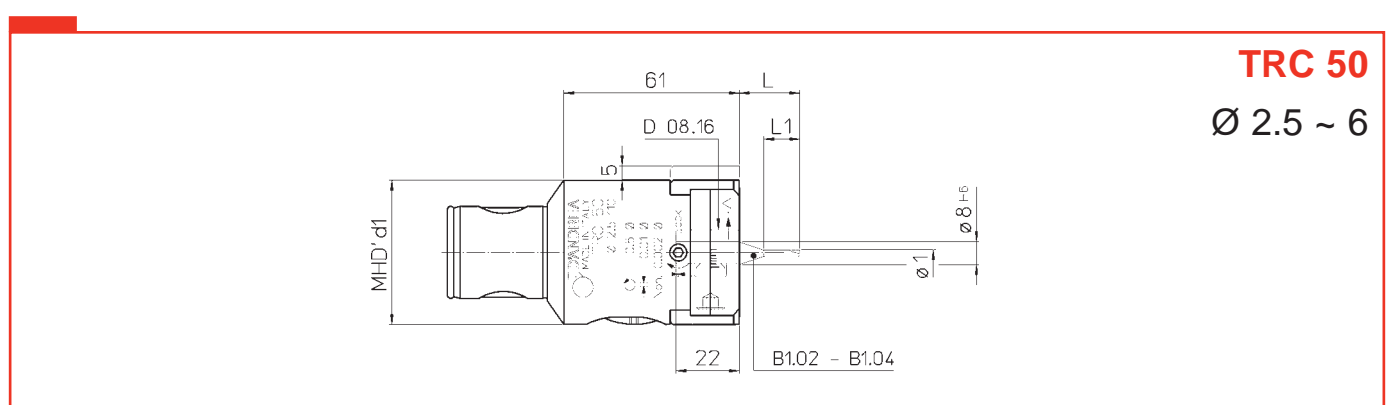
1. Corpo
2. Slitta portautensili
3. Perno radiale espandibile
4. Nonio micrometrico
5. Vite bloccaggio slitta
6. Uscita refrigerante
7. Vite bloccaggio utensili
8. Oliatore
9. Viti bloccaggio
portautensili

p. 260

p. 218-219

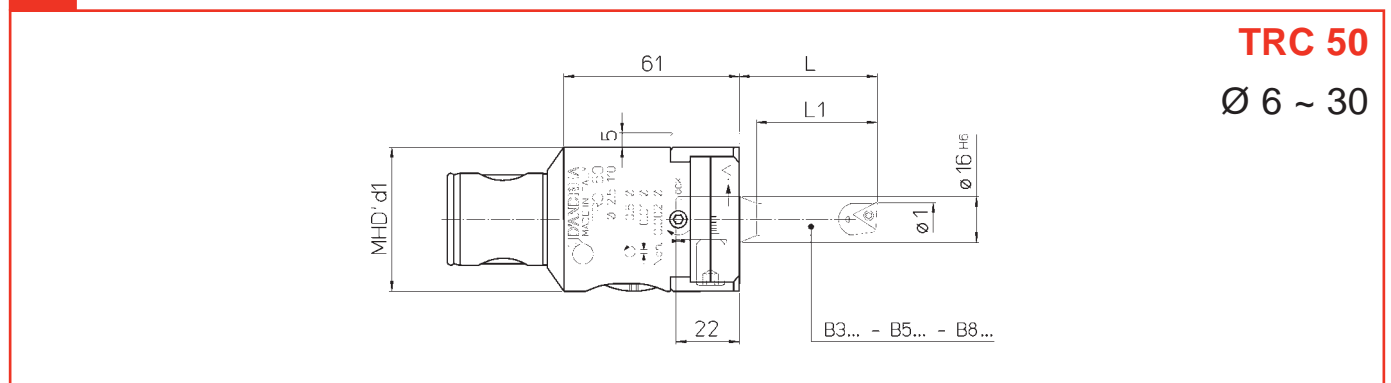
p. 242





TRC 50
Ø 2.5 ~ 6

REF.	CODE	MHD'd ₁	Ø ₁	B...	L	L ₁	kg
TRC 50	45 50 150 0080 0	50	2.5 ~ 4	B1.02	21	12.5	1
			4 ~ 6	B1.04	24	-	



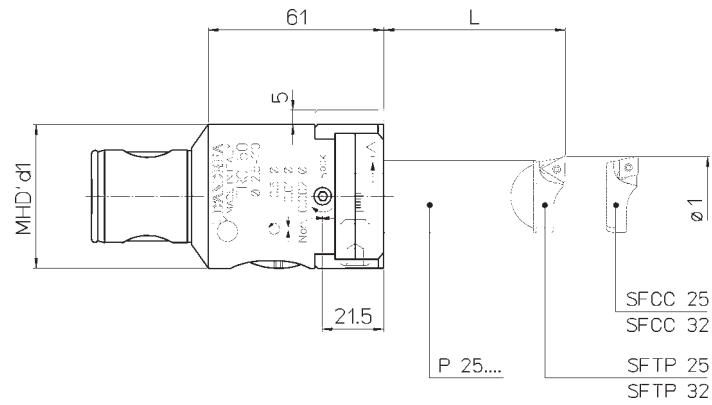
TRC 50
Ø 6 ~ 30

REF.	CODE	MHD'd ₁	Ø ₁	B...	L	L ₁	⊙	⊙	kg
TRC 50	45 50 150 0080 0	50	6 ~ 8	B3.06	29	21	•	-	1
				B5.06	36	-	•	-	
				B8.06	45	-	•	-	
			8 ~ 10	B3.08	36	28	•	-	
				B5.08	48	-	•	-	
				B8.08	60	-	•	-	
			10 ~ 12	B3.10	43	35	-	•	
				B5.10	60	-	-	•	
				B8.10	75	-	-	•	
			11 ~ 13	B3.11	48	40	-	•	
				B3.12	48	42	-	•	
				12 ~ 14	B5.12	72	-	-	
			B8.12		90	-	-	•	
			14 ~ 16		B3.14	52	50	-	
B5.14	84	-		-	•				
B8.14	105	-		-	•				
16 ~ 18	B3.16	58	50	-	•				
	B5.16	96	-	-	•				
	B8.16	120	-	-	•				
18 ~ 22	B3.18	63	-	-	•				
22 ~ 30	B3.22	68	-	-	•				



TRC 50

Ø 28 ~ 56



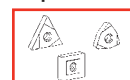
110

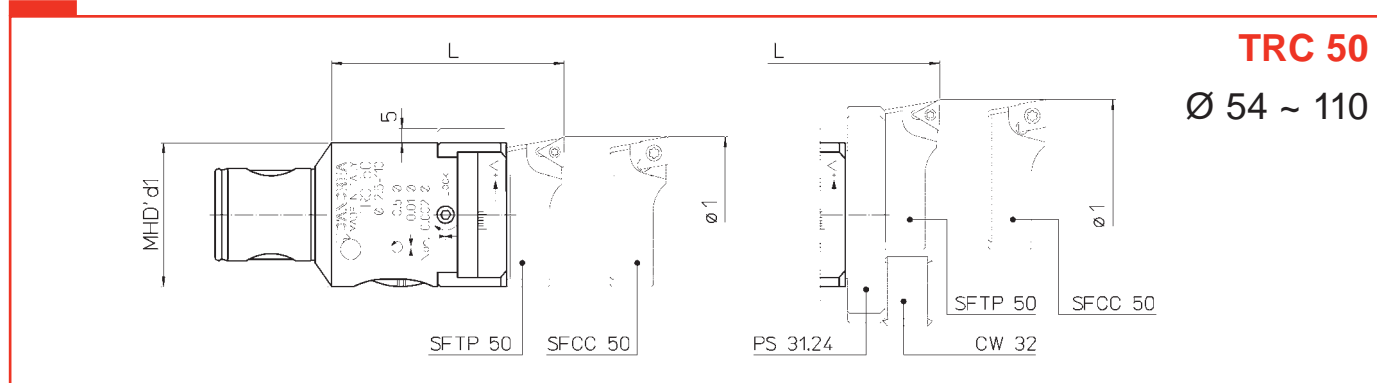
REF.	CODE	MHD'd ₁	Ø ₁	L	P 25..	SF..	△	□	kg
TRC 50	45 50 150 0080 0	50	28 ~ 44	63	P 25.63	SFTP 25	•	•	1
				105	P 25.105	SFCC 25	•	•	
			36 ~ 56	63	P 25.63	SFTP 32	•	•	
				105	P 25.105	SFCC 32	•	•	

p. 260

p. 218-219

p. 242

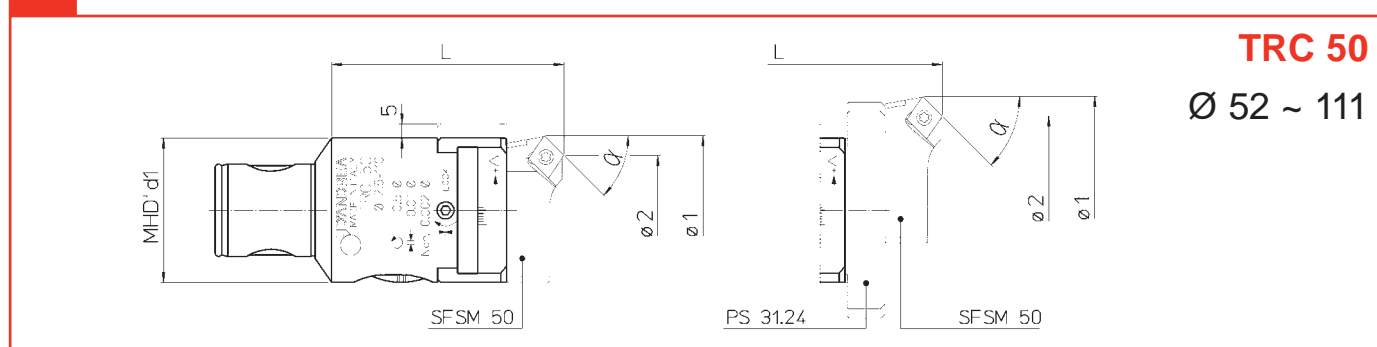




TRC 50

Ø 54 ~ 110

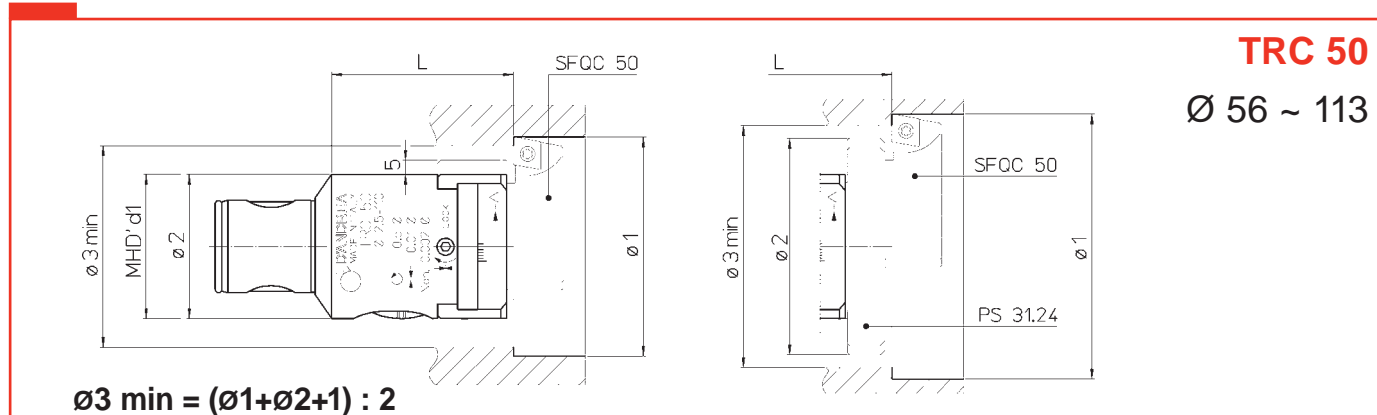
REF.	CODE	MHD'd1	Ø1	L	PS	SF..			kg
TRC 50	45 50 150 0080 0	50	54 ~ 86	80	-	SFTP 50 SFCC 50	•	•	1
			80 ~ 110	94	PS 31.24				
			92 ~ 110	PS 31.24+CW32					



TRC 50

Ø 52 ~ 111

REF.	CODE	MHD'd1	Ø1	Ø2	α	L	PS	SFSM		kg
TRC 50	45 50 150 0080 0	50	52 ~ 86	47.5 ~ 81	15°	80	-	SFSM 50-15° SFSM 50-30° SFSM 50-45°	•	1
				43 ~ 76	30°					
				38.5 ~ 72	45°					
			77 ~ 111	72 ~ 106	15°	94	PS 31.24			
				67.5 ~ 101	30°					
				63.5 ~ 97	45°					



TRC 50

Ø 56 ~ 113

REF.	CODE	MHD'd1	Ø1	Ø2	L	PS	SFQC		kg
TRC 50	45 50 150 0080 0	50	56 ~ 88.5	50	63	-	SFQC 50	•	1
			81 ~ 113.5	75	77	PS 31.24			

