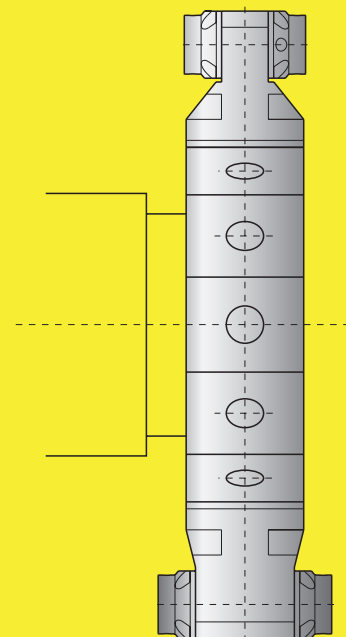
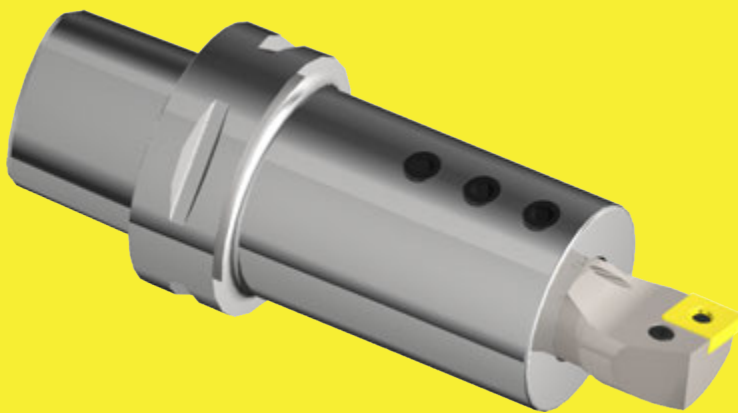
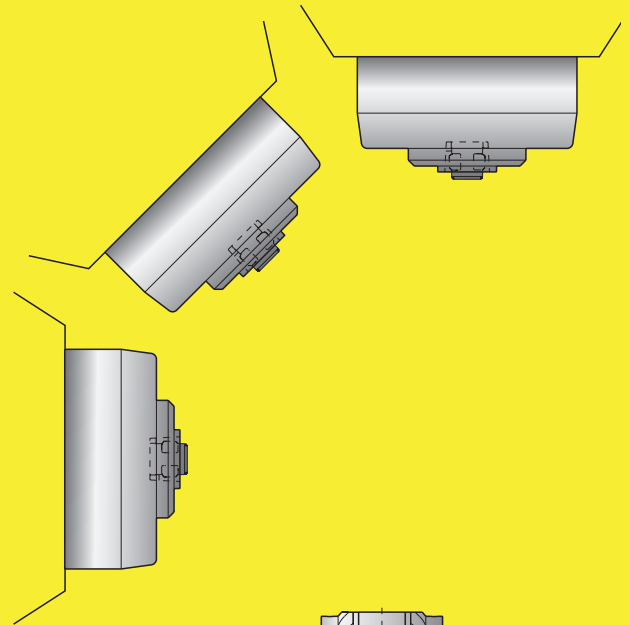
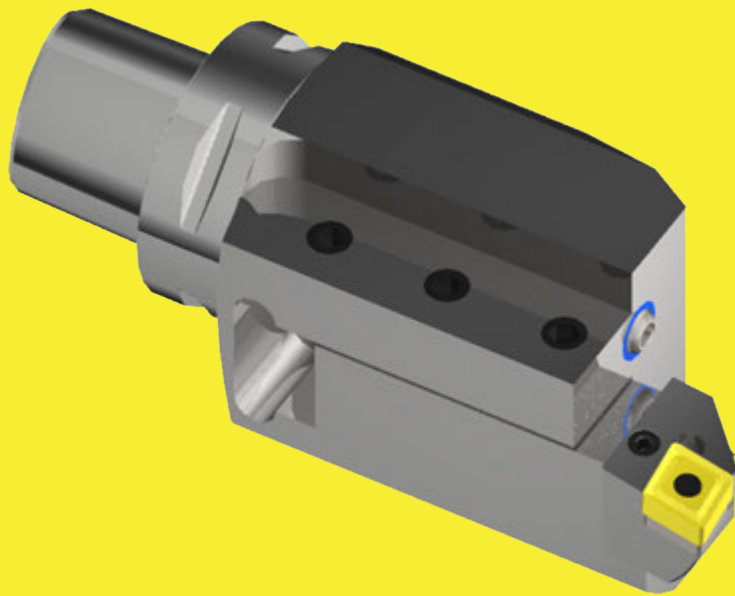
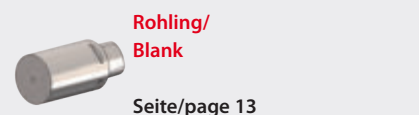
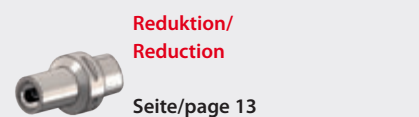
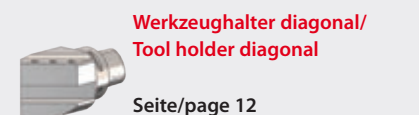
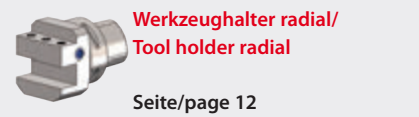
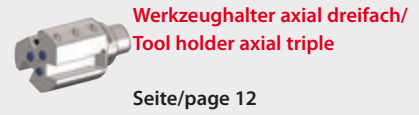
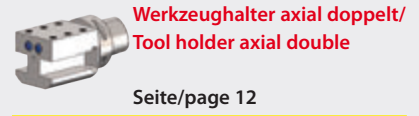
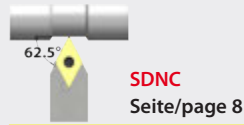
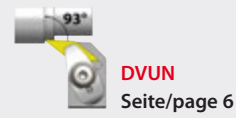




Dreh - werkzeuge Turning tools

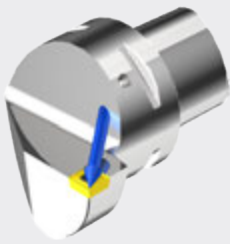




NEW

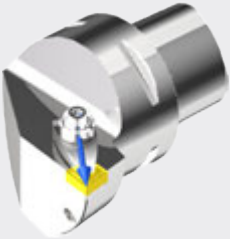
Kühlung und Klemmsysteme

Cooling and clamping systems



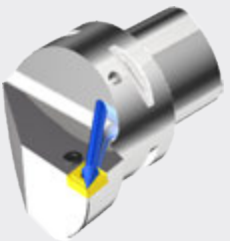
- Spansystem: Die Wendeplatte wird mittels Schraubenklemmung Typ S gespannt.
- Kühlsystem: Klemmhalter für positive Wendeplatten besitzen eine ausgerichtete Kühlmitteldüse.

- Clamping system: The insert is tightened via screw clamping Type S.
- Cooling system: Turning tools for positive inserts feature an adjusted coolant nozzle.



- Spansystem: Die Wendeplatte wird mittels Doppelklemmung Typ D gespannt.
- Kühlsystem: Klemmhalter mit Doppelklemmung verfügen über eine ausrichtbare Hochdruckkühldüse.

- Clamping system: The insert is tightened via double-clamping Type D.
- Cooling system: Turning tools with double-clamping feature an adjustable high-pressure coolant nozzle.



- Spansystem: Die Wendeplatte wird mittels Kniehebelspannung Typ P gespannt.
- Kühlsystem: Klemmhalter mit Kniehebelspannung besitzen eine ausgerichtete Kühlmitteldüse.

- Clamping system: The insert is tightened via knuckle joint Type P.
- Cooling system: Turning tools with knuckle joint-clamping feature an adjusted coolant nozzle.

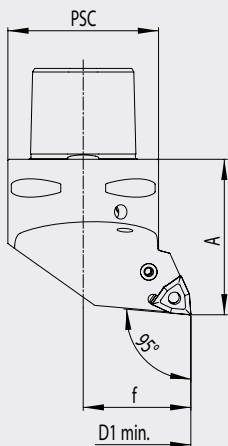
Klemmhalter

Turning tool

- für effiziente Drehbearbeitung
- optimale Kühlung durch ausgerichtete Kühldüse und Hochdruckkühldüse
- Klemmhalter für Aussenbearbeitung können auch für die Innenbearbeitung verwendet werden unter Berücksichtigung des D1 min.

- to turn efficiently
- optimal cooling by adjusted cooling nozzle and high pressure cooling nozzle
- Turning tools for exterior machining may also be used for interior machining, in consideration of D1 min.

- Rechte Ausführung dargestellt
- Right hand shown



PWLN R/L 95°/80°



Bestell-Nr. / Order number	PSC	f	D1 min.	A	Wendeplatte/ Insert	Ersatzteile/ Spareparts
PS4.PWE.(R/L)LA.050	40	27	50	50	WN .. 08 04 ..	P04
PS5.PWE.(R/L)LA.060	50	35	65	60	WN .. 08 04 ..	P04
PS6.PWE.(R/L)LA.065	63	45	80	65	WN .. 08 04 ..	P04

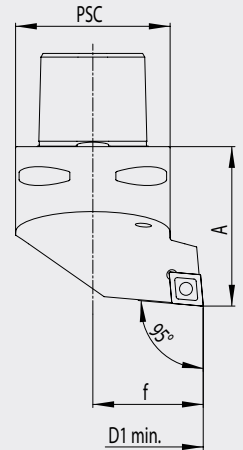


SCLC R/L 95°/80°



Bestell-Nr./ Order number	PSC	f	D1 min.	A	Wendeplatte/ Insert	Ersatzteile/ Spareparts
PS4.KCC.(R/L)LA.050	40	27	50	50	CC..12 04..	S01
PS5.KCC.(R/L)LA.060	50	35	65	60	CC..12 04..	S01
PS6.KCC.(R/L)LA.065	63	45	80	65	CC..12 04..	S01

- Rechte Ausführung dargestellt
- Right hand shown



PCLN R/L 95°/80°



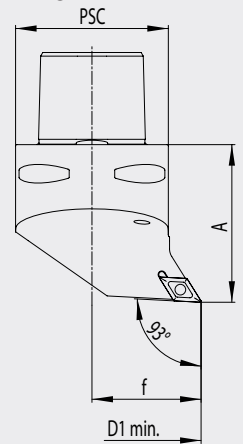
Bestell-Nr./ Order number	PSC	f	D1 min.	A	Wendeplatte/ Insert	Ersatzteile/ Spareparts
PS4.PCD.(R/L)LA.050	40	27	50	50	CN..12 04..	P01
PS5.PCD.(R/L)LA.060	50	35	65	60	CN..12 04..	P01
PS6.PCD.(R/L)LA.065	63	45	80	65	CN..12 04..	P01
PS6.PCE.(R/L)LA.065	63	45	80	65	CN..16 06..	P02

SDUC R/L 93°/55°



Bestell-Nr./ Order number	PSC	f	D1 min.	A	Wendeplatte/ Insert	Ersatzteile/ Spareparts
PS4.KDB.(R/L)UA.050	40	27	50	50	DC..11 T3..	S05
PS5.KDB.(R/L)UA.060	50	35	65	60	DC..11 T3..	S05
PS6.KDB.(R/L)UA.065	63	45	80	65	DC..11 T3..	S05

- Rechte Ausführung dargestellt
- Right hand shown



PDUN R/L 93°/55°



Bestell-Nr./ Order number	PSC	f	D1 min.	A	Wendeplatte/ Insert	Ersatzteile/ Spareparts
PS4.PDF.(R/L)UA.050	40	27	50	50	DN..15 06..*	P05
PS5.PDF.(R/L)UA.060	50	35	65	60	DN..15 06..*	P05
PS6.PDF.(R/L)UA.065	63	45	80	65	DN..15 06..*	P05

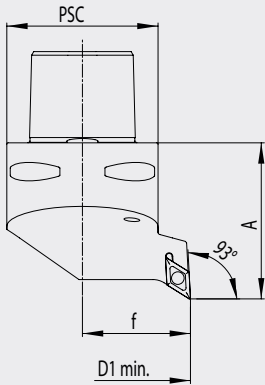
* DN..15 04.. möglich mit
Unterlegplatte WDF.ER2.101.004

* DN..15 04.. possible with tip pad
WDF.ER2.101.004

SDJC R/L 55°/93°



- Rechte Ausführung dargestellt
- Right hand shown



Bestell-Nr./ Order number	PSC	f	D1 min.	A	Wendeplatte/ Insert	Ersatzteile/ Spareparts
PS4.KDB.(R/L)JA.050	40	27	50	50	DC..11 T3..	S05
PS5.KDB.(R/L)JA.060	50	35	60	60	DC..11 T3..	S05
PS6.KDB.(R/L)JA.065	63	45	80	65	DC..11 T3..	S05



PDJN R/L 55°/93°



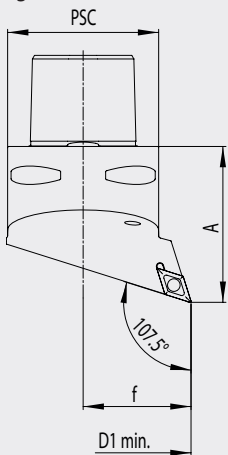
Bestell-Nr./ Order number	PSC	f	D1 min.	A	Wendeplatte/ Insert	Ersatzteile/ Spareparts
PS4.PDF.(R/L)JA.050	40	27	-	50	DN..15 06..*	P05
PS5.PDF.(R/L)JA.060	50	35	-	60	DN..15 06..*	P05
PS6.PDF.(R/L)JA.065	63	45	-	65	DN..15 06..*	P05



SDHC R/L 107.5°/55°



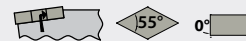
- Rechte Ausführung dargestellt
- Right hand shown



Bestell-Nr./ Order number	PSC	f	D1 min.	A	Wendeplatte/ Insert	Ersatzteile/ Spareparts
PS4.KDB.(R/L)HA.050	40	27	50	50	DC..11 T3..	S05
PS5.KDB.(R/L)HA.060	50	35	65	60	DC..11 T3..	S05
PS6.KDB.(R/L)HA.065	63	45	80	65	DC..11 T3..	S05



PDHN R/L 107.5°/55°



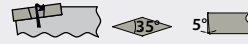
Bestell-Nr./ Order number	PSC	f	D1 min.	A	Wendeplatte/ Insert	Ersatzteile/ Spareparts
PS4.PDF.(R/L)HA.050	40	27	50	50	DN..15 06..*	P05
PS5.PDF.(R/L)HA.060	50	35	65	60	DN..15 06..*	P05
PS6.PDF.(R/L)HA.065	63	45	80	65	DN..15 06..*	P05



* DN..15 04.. möglich mit
Unterlegplatte WDF.ER2.101.004

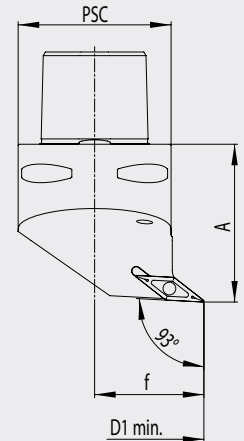
* DN..15 04.. possible with tip pad
WDF.ER2.101.004

SVUB R/L 93°/35°

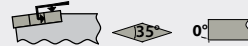


Bestell-Nr. / Order number	PSC	f	D1 min.	A	Wendeplatte/ Insert	Ersatzteile/ Spareparts
PS6.KVF.(R/L) UA.065	63	45	80	65	VB .. 16 04 ..	S07

- Rechte Ausführung dargestellt
- Right hand shown



DVUN R/L 93°/35°



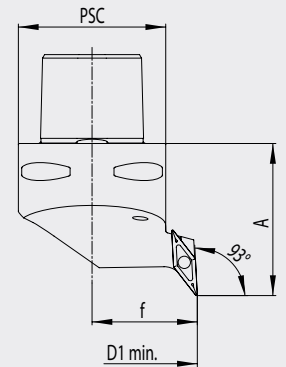
Bestell-Nr. / Order number	PSC	f	D1 min.	A	Wendeplatte/ Insert	Ersatzteile/ Spareparts
PS6.KVD.(R/L) UA.065	63	45	80	65	VN .. 16 04 ..	D07

SVJB R/L 35°/93°



Bestell-Nr. / Order number	PSC	f	D1 min.	A	Wendeplatte/ Insert	Ersatzteile/ Spareparts
PS6.KVF.(R/L) JA.065	63	45		65	VB .. 16 04 ..	S07

- Rechte Ausführung dargestellt
- Right hand shown

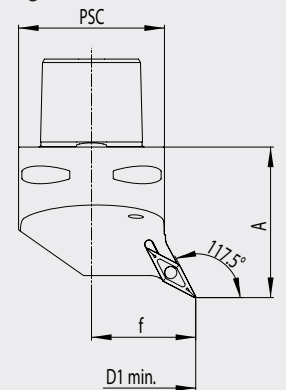


SVPB R/L 117.5°/35°

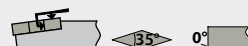


Bestell-Nr. / Order number	PSC	f	D1 min.	A	Wendeplatte/ Insert	Ersatzteile/ Spareparts
PS4.KVF.(R/L) PA.050	40	27	50	50	VB .. 16 04 ..	S07
PS5.KVF.(R/L) PA.060	50	35	65	60	VB .. 16 04 ..	S07
PS6.KVF.(R/L) PA.065	63	45	80	65	VB .. 16 04 ..	S07

- Rechte Ausführung dargestellt
- Right hand shown

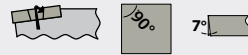


DVPN R/L 117.5°/35°

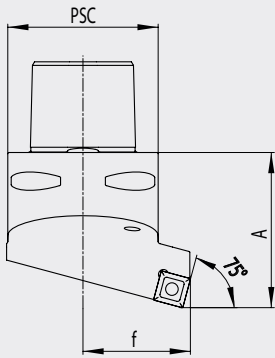


Bestell-Nr. / Order number	PSC	f	D1 min.	A	Wendeplatte/ Insert	Ersatzteile/ Spareparts
PS4.KVD.(R/L) PA.050	40	27	50	50	VN .. 16 04 ..	D07
PS5.KVD.(R/L) PA.060	50	35	65	60	VN .. 16 04 ..	D07
PS6.KVD.(R/L) PA.065	63	45	80	65	VN .. 16 04 ..	D07

SSBC R/L 90°/75°



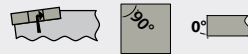
- Rechte Ausführung dargestellt
- Right hand shown



Bestell-Nr./ Order number	PSC	f	D1 min.	A	Wendeplatte/ Insert	Ersatzteile/ Spareparts
PS6.KSB.(R/L)BA.065	63	45	-	65	SC .. 12 04 ..	S09



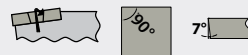
PSBN R/L 90°/75°



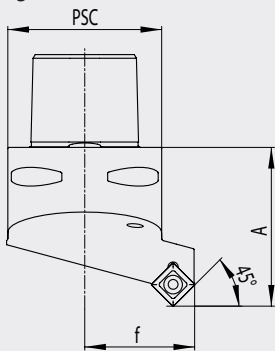
Bestell-Nr./ Order number	PSC	f	D1 min.	A	Wendeplatte/ Insert	Ersatzteile/ Spareparts
PS6.PSD.(R/L)BA.065	63	45	-	65	SN .. 12 04 ..	P07



SSSC R/L 90°/45°



- Rechte Ausführung dargestellt
- Right hand shown



Bestell-Nr./ Order number	PSC	f	D1 min.	A	Wendeplatte/ Insert	Ersatzteile/ Spareparts
PS6.KSB.(R/L)SA.065	63	45	-	65	SC .. 12 04 ..	S09



PSSN R/L 90°/45°



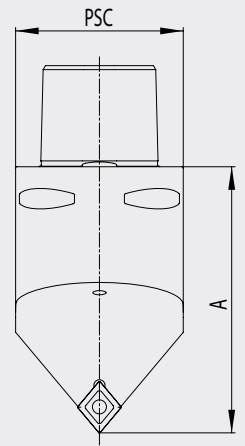
Bestell-Nr./ Order number	PSC	f	D1 min.	A	Wendeplatte/ Insert	Ersatzteile/ Spareparts
PS6.PSD.(R/L)SA.065	63	45	-	65	SN .. 12 04 ..	P07



SCMC N 50°/80°/50°



Bestell-Nr. / Order number	PSC	A	Wendeplatten/ Inserts	Ersatzteile/ Spareparts
PS6.KCC.NMA.100	63	100	CC .. 12 04 ..	S01
PS6.KCC.NMA.130	63	130	CC .. 12 04 ..	S01



PCMN N 50°/80°/50°

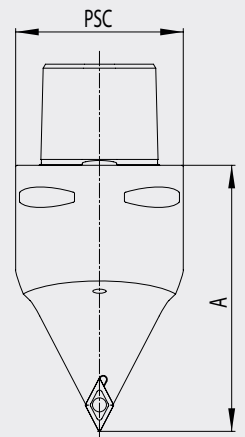


Bestell-Nr. / Order number	PSC	A	Wendeplatten/ Inserts	Ersatzteile/ Spareparts
PS6.PCD.NMA.100	63	100	CN .. 12 04 ..	P01
PS6.PCD.NMA.130	63	130	CN .. 12 04 ..	P01
PS6.PCE.NMA.100	63	100	CN .. 16 06 ..	P03
PS6.PCE.NMA.130	63	130	CN .. 16 06 ..	P03

SDNC N 62.5°/55°/62.5°



Bestell-Nr. / Order number	PSC	A	Wendeplatten/ Inserts	Ersatzteile/ Spareparts
PS6.KDB.NNA.100	63	100	DC .. 11 T3 ..	S05
PS6.KDB.NNA.130	63	130	DC .. 11 T3 ..	S05



PDNN N 62.5°/55°/62.5°

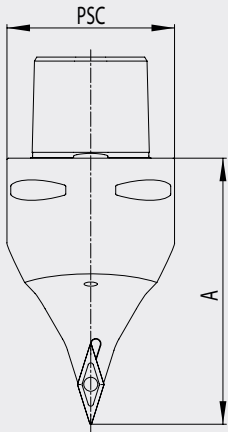


Bestell-Nr. / Order number	PSC	A	Wendeplatten/ Inserts	Ersatzteile/ Spareparts
PS6.PDF.NNA.100	63	100	DN .. 15 06 ..*	P06
PS6.PDF.NNA.130	63	130	DN .. 15 06 ..*	P06

* DN .. 15 04 .. möglich mit Unterlegplatte WDF.ER2.101.004

* DN .. 15 04 .. possible with tip pad WDF.ER2.101.004

SVVB N 72.5°/35°/72.5°



Bestell-Nr. / Order number	PSC	A	Wendeplatten/ Inserts	Ersatzteile/ Spareparts
PS6.KVF.NVA.100	63	100	VB .. 16 04 ..	S07
PS6.KVF.NVA.130	63	130	VB .. 16 04 ..	S07



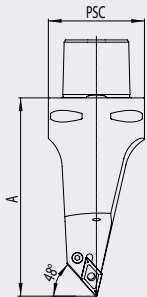
DVVN N 72.5°/35°/72.5°



Bestell-Nr. / Order number	PSC	A	Wendeplatten/ Inserts	Ersatzteile/ Spareparts
PS6.KVD.NVA.100	63	100	VN .. 16 04 ..	D08
PS6.KVD.NVA.130	63	130	VN .. 16 04 ..	D08



PDMN L 48° (93°)/55°



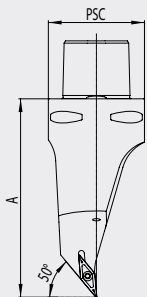
Bestell-Nr. / Order number	PSC	A	Wendeplatten/ Inserts	Ersatzteile/ Spareparts
PS6.PDF.NXA.130	63	130	DN .. 15 06 ..*	P06

* DN .. 15 04 .. möglich mit Unterlegplatte WDF.ER2.101.004

* DN .. 15 04 .. possible with tip pad WDF.ER2.101.004



SVMB L 50° (95°)/35°



Bestell-Nr. / Order number	PSC	A	Wendeplatten/ Inserts	Ersatzteile/ Spareparts
PS6.KVF.NMA.130	63	130	VB .. 16 04 ..	S07

SVMC L 50° (95°)/35°



Bestell-Nr. / Order number	PSC	A	Wendeplatten/ Inserts	Ersatzteile/ Spareparts
PS6.KVB.NMA.130	63	130	VC .. 16 04 ..	S07

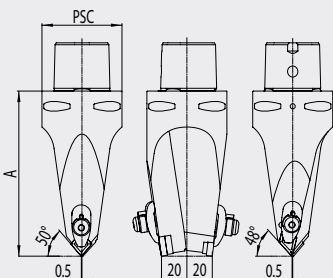
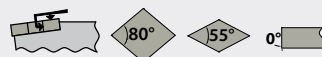
DVMN L 50° (95°)/35°



Bestell-Nr. / Order number	PSC	A	Wendeplatten/ Inserts	Ersatzteile/ Spareparts
PS6.KVD.NMA.130	63	130	VN .. 16 04 ..	D08



T DCM 50° (95°) / DDM 48° (93°)



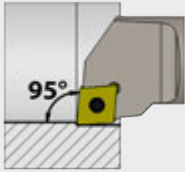
Bestell-Nr. / Order number	PSC	A	Wendeplatten/ Inserts	Ersatzteile/ Spareparts
PS6.KCD.NXD.130	63	130	DN .. 15 06 ..*	D06
			CN .. 12 04 ..	D01

* DN .. 15 04 .. möglich mit Unterlegplatte WDF.ER2.101.004

* DN .. 15 04 .. possible with tip pad WDF.ER2.101.004

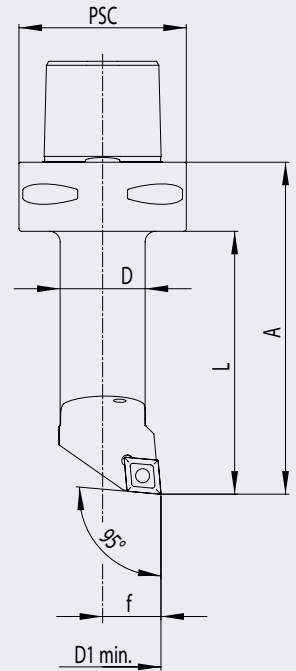


SCLC R/L 95°/80°

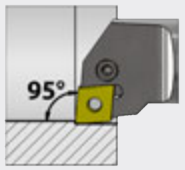


Bestell-Nr./ Order number	PSC	f	D	D1 min.	A	L	Wendeplatte / Insert	Ersatzteile/ Spareparts
PS4.BCC.(R/L)LA.090	40	17	25	32	90	69	CC .. 12 04 ..	S01
PS4.BCC.(R/L)LB.110	40	22	32	40	110	89	CC .. 12 04 ..	S01
PS5.BCC.(R/L)LA.090	50	17	25	32	90	67	CC .. 12 04 ..	S01
PS5.BCC.(R/L)LB.110	50	22	32	40	110	88	CC .. 12 04 ..	S01
PS6.BCC.(R/L)LB.125	63	22	32	40	125	103	CC .. 12 04 ..	S01
PS6.BCC.(R/L)LB.160	63	22	32	40	160	138	CC .. 12 04 ..	S01
PS6.BCC.(R/L)LC.140	63	27	40	50	140	118	CC .. 12 04 ..	S01
PS6.BCC.(R/L)LC.180	63	27	40	50	180	158	CC .. 12 04 ..	S01

- Rechte Ausführung dargestellt
- Right hand shown

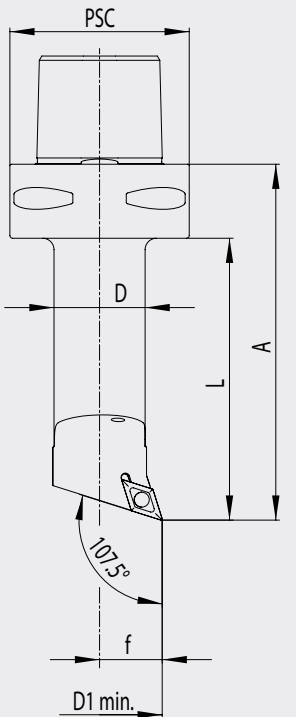


PCLN R/L 95°/80°

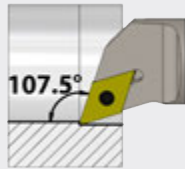


Bestell-Nr./ Order number	PSC	f	D	D1 min.	A	L	Wendeplatte / Insert	Ersatzteile/ Spareparts
PS4.PCD.(R/L)LB.110	40	22	32	40	110	89	CN .. 12 04 ..	P01
PS5.PCD.(R/L)LB.110	50	22	32	40	110	88	CN .. 12 04 ..	P01
PS6.PCD.(R/L)LC.140	63	27	40	50	140	118	CN .. 12 04 ..	P01
PS6.PCD.(R/L)LC.180	63	27	40	50	180	158	CN .. 12 04 ..	P01

- Rechte Ausführung dargestellt
- Right hand shown



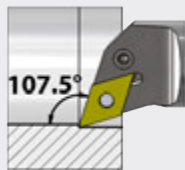
SDQC R/L 107.5°/55°



Bestell-Nr./ Order number	PSC	f	D	D1 min.	A	L	Wendeplatte / Insert	Ersatzteile/ Spareparts
PS4.BDB.(R/L)QA.090	40	17	25	32	90	69	DC .. 11 T3 ..	S05
PS4.BDB.(R/L)QB.110	40	22	32	40	110	89	DC .. 11 T3 ..	S05
PS5.BDB.(R/L)QA.090	50	17	25	32	90	67	DC .. 11 T3 ..	S05
PS5.BDB.(R/L)QB.110	50	22	32	40	110	88	DC .. 11 T3 ..	S05
PS6.BDB.(R/L)QB.125	63	22	32	40	125	103	DC .. 11 T3 ..	S05
PS6.BDB.(R/L)QB.160	63	22	32	40	160	138	DC .. 11 T3 ..	S05
PS6.BDB.(R/L)QC.140	63	27	40	50	140	118	DC .. 11 T3 ..	S05
PS6.BDB.(R/L)QC.180	63	27	40	50	180	158	DC .. 11 T3 ..	S05

- Rechte Ausführung dargestellt
- Right hand shown

PDQN R/L 107.5°/55°



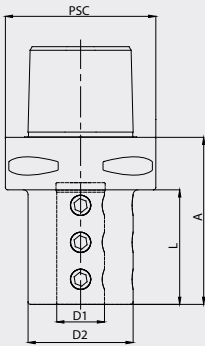
Bestell-Nr./ Order number	PSC	f	D	D1 min.	A	L	Wendeplatte / Insert	Ersatzteile/ Spareparts
PS4.PDF.(R/L)QB.110	40	22	32	40	110	89	DN .. 15 06 .. *	P05
PS5.PDF.(R/L)QB.110	50	22	32	40	110	88	DN .. 15 06 .. *	P05
PS6.PDF.(R/L)QC.140	63	27	40	50	140	118	DN .. 15 06 .. *	P05
PS6.PDF.(R/L)QC.180	63	27	40	50	180	158	DN .. 15 06 .. *	P05

* DN .. 15 04 .. möglich mit Unterlegplatte WDF.ER2.101.004

* DN .. 15 04 .. possible with tip pad WDF.ER2.101.004

Bohrstangenhalter

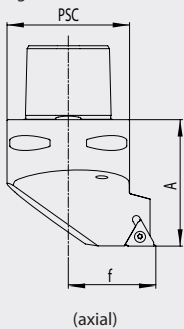
Boring bar holder



Bestell-Nr. / Order number	PSC	D1	D2	A	L
PS4.B06.K01.065	40	6	34	65	43
PS4.B08.K01.065	40	8	34	65	43
PS4.B10.K01.065	40	10	34	65	43
PS4.B12.K01.065	40	12	36	65	43
PS4.B16.K01.065	40	16	40	65	43
PS4.B20.K01.065	40	20	44	65	-
PS5.B06.K01.070	50	6	34	70	48
PS5.B08.K01.070	50	8	34	70	48
PS5.B10.K01.070	50	10	34	70	48
PS5.B12.K01.070	50	12	36	70	48
PS5.B16.K01.070	50	16	40	70	48
PS5.B20.K01.070	50	20	44	70	48
PS6.B06.K01.080	63	6	34	80	58
PS6.B08.K01.080	63	8	34	80	58
PS6.B10.K01.080	63	10	34	80	58
PS6.B12.K01.080	63	12	36	80	58
PS6.B16.K01.080	63	16	40	80	58
PS6.B20.K01.080	63	20	44	80	58
PS6.B25.K01.100	63	25	50	100	78
PS6.B32.K01.100	63	32	56	100	78
PS6.B40.K01.105	63	40	63	105	83



- Rechte Ausführung dargestellt
- Right hand shown



Aussengewinde radial

External thread radial

Bestell-Nr. / Order number	PSC	f	D1 min.	A	R/L	Wendeplatte/ Insert	Ersatzteile/ Spareparts
PS6.KGB.RGR.065	63	45	-	65	R	16 ER	G01
PS6.KGB.LGR.065	63	45	-	65	L	16 EL	G02



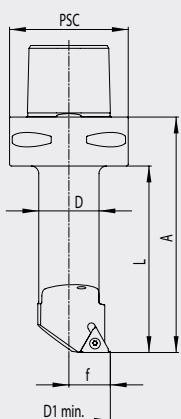
Aussengewinde axial

External thread axial

Bestell-Nr. / Order number	PSC	f	D1 min.	A	R/L	Wendeplatte/ Insert	Ersatzteile/ Spareparts
PS6.KGB.RGA.065	63	45	-	65	R	16 EL	G04
PS6.KGB.LGA.065	63	45	-	65	L	16 ER	G03



- Rechte Ausführung dargestellt
- Right hand shown



Innengewinde

Internal thread

Bestell-Nr. / Order number	PSC	f	D	D1 min.	A	L	Wendepl./ Insert	Ersatz./ Sparep.
PS6.BGB.RGA.125	63	22	32	40	125	103	16 IL	G04
PS6.BGB.LGA.125	63	22	32	40	125	103	16 IR	G03
PS6.BGB.RGA.140	63	27	40	50	140	138	16 IL	G04
PS6.BGB.LGA.140	63	27	40	50	140	138	16 IR	G03

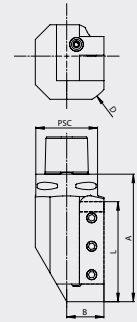


Werkzeughalter axial

Tool holder axial



Bestell-Nr./ Order number	PSC	B	Vierkant Square	A	L	ØD
PS4.V20.(R/L)11.080	40	30	20x20	80	60	80
PS5.V20.(R/L)11.098	50	30	20x20	98	75	80
PS6.V20.(R/L)11.100	63	30	20x20	100	75	80
PS6.V25.(R/L)11.130	63	38	25x25	130	102	102

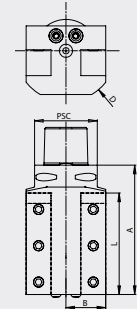


Werkzeughalter axial doppelt

Tool holder axial double



Bestell-Nr./ Order number	PSC	B	Vierkant Square	A	L	ØD	rechts/links right/left
PS4.V20.R21.080	40	30	20x20	80	60	80	R
PS5.V20.R21.098	50	30	20x20	98	75	80	R
PS6.V20.R21.100	63	30	20x20	100	75	80	R
PS6.V25.R21.130	63	40	25x25	130	102	102	R

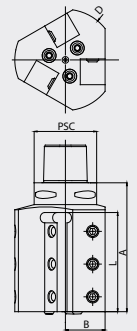


Werkzeughalter axial dreifach

Tool holder axial triple



Bestell-Nr./ Order number	PSC	B	Vierkant Square	A	L	ØD	rechts/links right/left
PS5.V20.R31.123	50	36	20x20	123	97	90	R
PS6.V20.R31.125	63	36	20x20	125	97	90	R
PS6.V25.R31.130	63	40	25x25	130	102	102	R

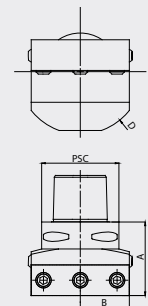


Werkzeughalter radial

Tool holder radial



Bestell-Nr./ Order number	PSC	B	Vierkant Square	A	ØD
PS4.V20.N11.055	40	30	20x20	55	80
PS5.V20.N11.058	50	30	20x20	58	80
PS6.V20.N11.060	63	30	20x20	60	80
PS6.V25.N11.071	63	40	25x25	71	102

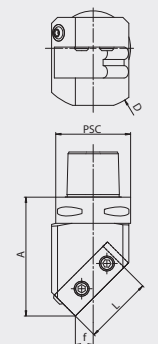


Werkzeughalter diagonal 45°

Tool holder diagonal 45°

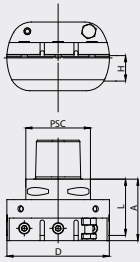


Bestell-Nr./ Order number	PSC	f	Vierkant Square	A	ØD	rechts/links right/left
PS5.V20.R12.098	50	15	20x20	98	80	R
PS5.V20.L12.098	50	15	20x20	98	80	L
PS6.V20.R12.100	63	15	20x20	100	80	R
PS6.V20.L12.100	63	15	20x20	100	80	L
PS6.V25.R12.110	63	15	25x25	110	102	R
PS6.V25.L12.110	63	15	25x25	110	102	L



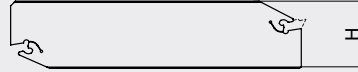
Abstechhalter radial

Cut-off block radial



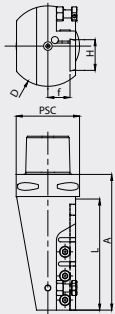
Bestell-Nr. / Order number	PSC	A	H	L	ØD	rechts/links right/left
PS5.AM3.K11.058	50	58	26	53	80	R/L
PS6.AM3.K11.060	63	60	32	54.5	100	R/L

- zur Aufnahme von Stechschwertern
- mit Innenkühlung
- to hold cut-off blades
- with inner coolant supply



Abstechhalter axial

Cut-off block axial



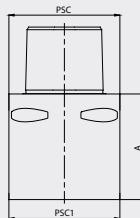
Bestell-Nr. / Order number	PSC	f	A	H	L	ØD	rechts/links right/left
PS5.AM3.K11.095	50	22	95	26	75	80	R
PS5.AM3.K12.095	50	22	95	26	75	80	L
PS6.AM3.K11.145	63	22	145	32	110	80	R
PS6.AM3.K12.145	63	22	145	32	110	80	L

- zur Aufnahme von Stechschwertern
- mit Innenkühlung
- to hold cut-off blades
- with inner coolant supply



Verlängerung

Extension

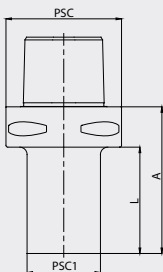


Bestell-Nr. / Order number	PSC	PSC 1	A
PS4.PS4.K01.060	40	40	60
PS5.PS5.K01.080	50	50	80
PS6.PS6.K01.060	63	63	60
PS6.PS6.K01.100	63	63	100



Reduktion

Reduction

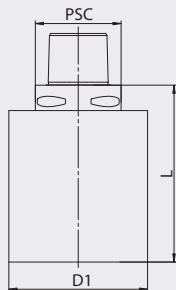


Bestell-Nr. / Order number	PSC	PSC 1	L	A
PS5.PS4.K01.065	50	40	40	65
PS6.PS4.K01.080	63	40	58	80
PS6.PS5.K01.080	63	50	51	80



Rohling

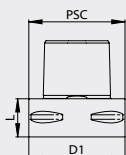
Blank



Bestell-Nr. / Order number	PSC	D1	L
PS4.Ro5.001.050	40	54	50
PS4.Ro8.001.080	40	80	80
PS5.Ro7.001.060	50	70	60
PS5.Ro8.001.098	50	80	98
PS5.Ro9.001.123	50	90	123
PS6.Ro6.001.100	63	63	100
PS6.Ro0.001.130	63	102	130

Trennstellenverschluss

Blanking plug

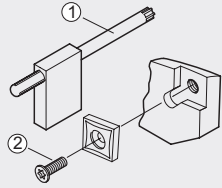


Bestell-Nr. / Order number	PSC	D1	L
PS6.000.001.025	63	63	25

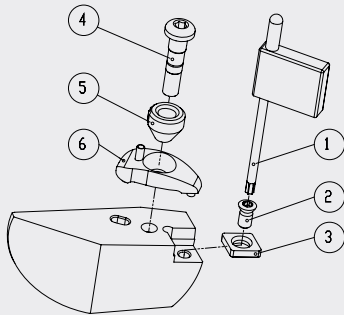


Ersatzteile / Zubehör

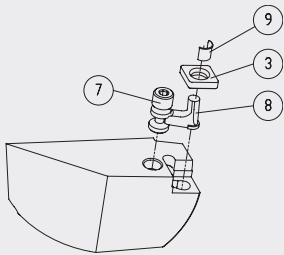
Spare parts / Accessories



Für Klemmhalter/ Bohrstange For turning tool/ boring bar	Typ/ Type	Bestell-Nr. / Order number ^①	Bestell-Nr. / Order number ^②
		Torx-Schlüssel/ Torx driver	Torx-Schraube Torx screw
xxx.xCC.xxx.xxx	S01	WCC.ER1.001.000	WCC.ER2.001.010
xxx.xCD.xxx.xxx	S02	WCC.ER1.001.000	WCC.ER2.001.010
xxx.xCE.xxx.xxx	S03	WCE.ER1.001.000	WCE.ER2.001.012
xxx.xWE.xxx.xxx	S04	WCC.ER1.001.000	WCC.ER2.001.010
xxx.xDB.xxx.xxx	S05	WCB.ER1.001.000	WCB.ER2.001.009
xxx.xDF.xxx.xxx	S06	WCC.ER1.001.000	WCC.ER2.001.010
xxx.xVF.xxx.xxx	S07	WCB.ER1.001.000	WCB.ER2.001.009
xxx.xVD.xxx.xxx	S08	WCB.ER1.001.000	WCB.ER2.001.009
xxx.xSB.xxx.xxx	S09	WCC.ER1.001.000	WCC.ER2.001.010



Für Klemmhalter/ Bohrstange For turning tool/ boring bar	Typ/ Type	Bestell-Nr. / Order number ^③	Bestell-Nr. / Order number ^④	Bestell-Nr. / Order number ^⑤	Bestell-Nr. / Order number ^⑥
		Zwischenlage/ Tip pad	Spannschraube/ Clamping screw	Düsenring/ Nozzle ring	Spannpratze/ Clamping short
xxx.xCD.xxx.xxx	D01	WCD.ER2.101.003	WCC.ER4.103.032	WCC.ER5.102.012	WCC.ER3.102.024
xxx.KCE.R/Lxx.xxx	D02	WCE.ER2.101.004	WCC.ER4.103.032	WCC.ER5.102.012	WCC.ER3.102.024
xxx.KCE.Nxx.xxx	D03	WCE.ER2.101.004	WCC.ER4.103.032	WCC.ER5.102.012	WCC.ER3.102.029
xxx.KWE.R/Lxx.xxx	D04	WWE.ER2.101.004	WCC.ER4.103.032	WCC.ER5.102.012	WCC.ER3.102.024
xxx.xDF.R/Lxx.xxx	D05	WDF.ER2.101.003	WCC.ER4.103.032	WCC.ER5.102.012	WCC.ER3.102.024
xxx.KDF.Nxx.xxx	D06	WDF.ER2.101.003	WCC.ER4.103.032	WCC.ER5.102.012	WCC.ER3.102.029
xxx.xVD.R/Lxx.xxx	D07	WVD.ER2.101.003	WCC.ER4.103.032	WCC.ER5.102.012	WCC.ER3.102.024
xxx.KVD.Nxx.xxx	D08	WVD.ER2.101.003	WCC.ER4.103.032	WCC.ER5.102.012	WCC.ER3.102.029
xxx.KSD.R/Lxx.xxx	D09	WSD.ER2.101.003	WCC.ER4.103.032	WCC.ER5.102.012	WCC.ER3.102.024

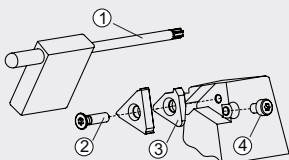


Für Klemmhalter/ Bohrstange For turning tool/ boring bar	Typ/ Type	Bestell-Nr. / Order number ^③	Bestell-Nr. / Order number ^⑦	Bestell-Nr. / Order number ^⑧	Bestell-Nr. / Order number ^⑨
		Zwischenlage/ Tip pad	Spannschraube/ Clamping screw	Kniehebel/ Lever	Rohrstift/ Hollow pin
xxx.PCD.xxx.xxx	P01	WCD.ER2.101.003	WCD.ER4.101.017	WCD.ER3.101.000	WCD.ER1.101.000
xxx.PCE.R/Lxx.xxx	P02	WCE.ER2.101.004	WCE.ER4.101.004	WCE.ER3.101.000	WCE.ER1.101.000
xxx.PCE.Nxx.xxx	P03	WCE.ER2.101.004	WCE.ER4.101.004	WCE.ER3.101.000	WCE.ER1.101.000
xxx.PWE.R/Lxx.xxx	P04	WWE.ER2.101.004	WCD.ER4.101.017	WDF.ER3.101.000	WCD.ER1.101.000
xxx.PDF.R/Lxx.xxx	P05	WDF.ER2.101.003	WCD.ER4.101.017	WDF.ER3.101.000	WCD.ER1.101.000
xxx.PDF.Nxx.xxx	P06	WDF.ER2.101.003	WCD.ER4.101.017	WDF.ER3.101.000	WCD.ER1.101.000
xxx.PSD.R/Lxx.xxx	P07	WSD.ER2.101.003	WCD.ER4.101.017	WCD.ER3.101.000	WCD.ER1.101.000

Für Werkzeughalter/
Für Bohrstangenhalter
For tool holder/
For boring bar holder

Bestell-Nr. /
Order number

	Klemmschraube/ Clamping screw	Dimension
xxx.V20.xxx.xxx	ERU.GS6.001.018	M10 x 18
xxx.V25.xxx.xxx	ERU.GS7.001.025	M12 x 25
xxx.B06.xxx.xxx	ERU.GS4.001.010	M 6 x 10
xxx.B08...B12.xxx.xxx	ERU.GS5.001.010	M 8 x 10
xxx.B16...B40.xxx.xxx	ERU.GS6.001.012	M10 x 12

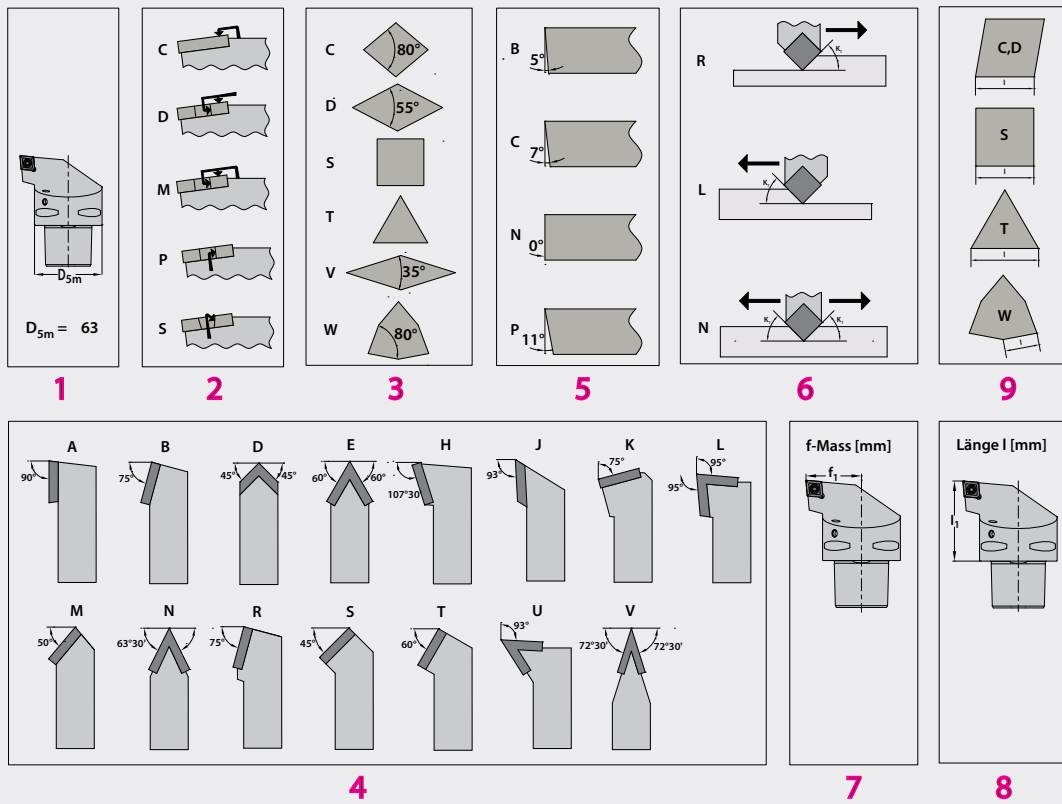


Für Gewindehalter For thread tool	Typ/ Type	Bestell-Nr. / Order number ^①	Bestell-Nr. / Order number ^②	Bestell-Nr. / Order number ^③	Bestell-Nr. / Order number ^④
		Torx-Schlüssel/ Torx driver	Torx-Schraube Torx screw	Zwischenlage/ Tip pad	Schraube/ Screw
xxx.KGB.RGR.xxx	G01	WGB.ER1.001.000	WGB.ER2.001.012	WGB.ER2.102.003	WGB.ER3.001.007
xxx.KGB.LGR.xxx	G02	WGB.ER1.001.000	WGB.ER2.001.012	WGB.ER2.101.003	WGB.ER3.001.007
xxx.xGB.RGA.xxx	G03	WGB.ER1.001.000	WGB.ER2.001.012	WGB.ER2.101.003	WGB.ER3.001.007
xxx.xGB.LGA.xxx	G04	WGB.ER1.001.000	WGB.ER2.001.012	WGB.ER2.102.003	WGB.ER3.001.007

Bezeichnung von PSC Klemhalter
für Aussenbearbeitung

Identification of external PSC
turning tool holder

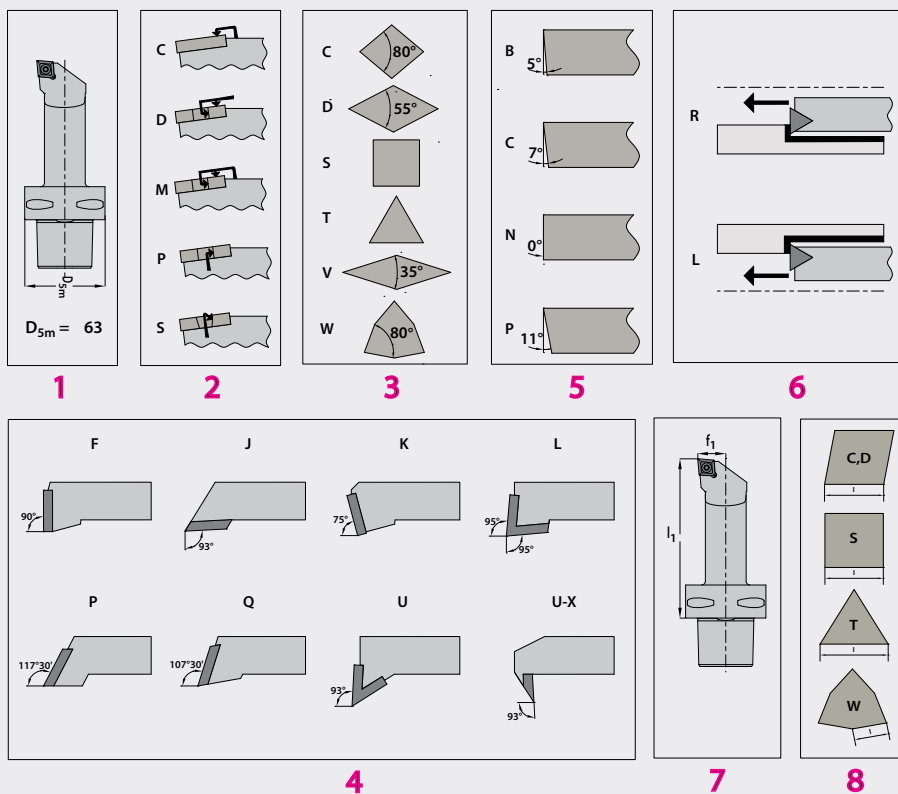
PSC 63 | D | C | L | N | R | 45 | 065 | 12
1 | 2 | 3 | 4 | 5 | 6 | 7 | 8 | 9



Bezeichnung von PSC Klemhalter
für Innenbearbeitung

Identification of internal PSC
turning tool holder

PSC 63 | S | C | L | C | R | - | 27180 | - | 09
1 | 2 | 3 | 4 | 5 | 6 | 7 | 8



SWISS  **TOOLS**

Swiss Tool Systems AG

Wydenstrasse 28

CH-8575 Bürglen

Phone +41 (0)71 634 85 20

Fax +41 (0)71 634 85 29

www.swisstools.org