

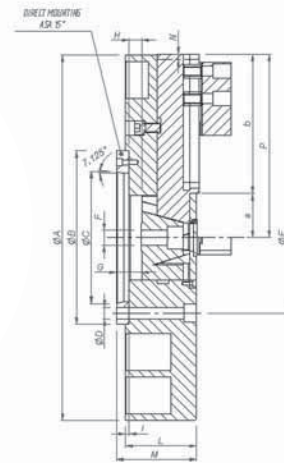
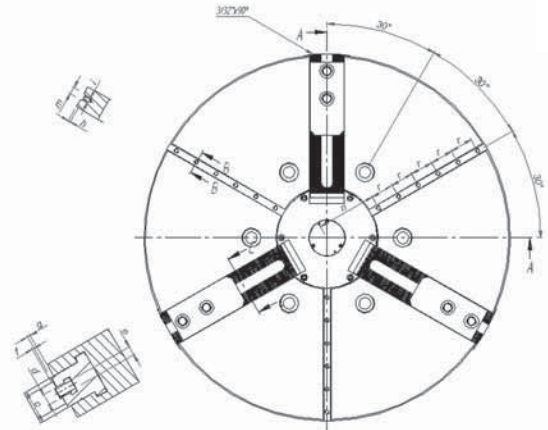
PLATOS AUTOMÁTICOS

POWER CHUCKS

Plato automático a 3 garras
diámetro 630 - 1000 mm,
sin paso de barra

Closed center chuck
630 - 1000 mm.
diameter

| Modelo / Model SPB 3G | mm | 630 | 700 | 800 | 900 | 1000 |
|--------------------------|----|--------------|--------------|--------------|-------------|--------------|
| A | mm | 630 | 700 | 800 | 900 | 1000 |
| B H6 | mm | 400 | 400 | 400 | 400 | 400 |
| C | mm | 285.77 (15") | 285.77 (15") | 285.77 (15") | 285.77(15") | 285.77 (15") |
| D | mm | 26 | 26 | 26 | 26 | 26 |
| E | mm | 330.2 | 330.2 | 330.2 | 330.2 | 330.2 |
| F | | M30 | M30 | M30 | M30 | M30 |
| G | mm | 55 | 55 | 55 | 55 | 55 |
| H (Carrera) / H (Stroke) | mm | 38 | 38 | 38 | 38 | 38 |
| I | mm | 8 | 8 | 8 | 8 | 8 |
| L | mm | 155 | 155 | 155 | 168 | 168 |
| M | mm | 175 | 175 | 175 | 188 | 188 |
| N (Carrera) / N (Stroke) | mm | 10 | 10 | 10 | 10 | 10 |
| P | mm | 320 | 355 | 405 | 455 | 505 |
| a | mm | 100 | 100 | 100 | 100 | 100 |
| b | mm | 220 | 255 | 305 | 355 | 405 |
| c | mm | 75 | 75 | 75 | 75 | 75 |
| d h8 | mm | 25.5 | 25.5 | 25.5 | 25.5 | 25.5 |
| e | | M 20 | M 20 | M 20 | M 20 | M 20 |
| f | mm | 4 | 4 | 4 | 4 | 4 |
| g | mm | 6 | 6 | 6 | 6 | 6 |
| h | mm | 5 | 5 | 5 | 5 | 5 |
| i | | M 10 | M 10 | M 10 | M 10 | M 10 |
| m | mm | 15 | 15 | 15 | 15 | 15 |
| n | mm | 130 | 130 | 130 | 130 | 130 |
| r | mm | 50 | 50 | 50 | 50 | 50 |



Plato automático autocen-
trante a tres garras diámetros
630 - 1000 mm. Garras base
con dentado en pulgadas
3/32 " x 90 °. Sin paso de
barra y con funcionamiento
mediante plano inclinado

Closed center power chuck
630 - 1000 mm. diameters.
Master jaws with inch
serration 3/32 " x 90 °.
Wedge Type.

La fuerza de bloqueo (KN) han sido medidas con unas garras superiores standard sobre la posición máxima externa del autocentrado.

The dynamic gripping forces have been measured using the standard soft top jaws placed in the most external position, but not exceeding the outer diameter of the chuck.

Características técnicas

Technical data

| Diámetro / Diameters | Mm | 630 | 700 | 800 | 900 | 1000 |
|---|--------|------|------|------|-----|------|
| Carrera de la garra / Radial jaw stroke | Mm | 10 | 10 | 10 | 10 | 10 |
| Carrera del plano inclinado / Axial wedge stroke | Mm | 38 | 38 | 38 | 38 | 38 |
| Fuerza tracción máxima / Max. draw pull | KN | 100 | 100 | 100 | 100 | 100 |
| Fuerza de amarrar máxima / Max. gripping force | KN | 240 | 240 | 240 | 240 | 240 |
| Velocidad máxima / Max. speed | r.p.m. | 1350 | 1220 | 1070 | 950 | 860 |
| Peso / Weight | Kg | 270 | 350 | 440 | 600 | 750 |
| Momento de inercia PD2 / Moment of inertia PD2 | Kg.m 2 | 27.6 | 42.8 | 70.4 | 122 | 188 |
| Diámetro amarrar mínimo / Min. clamping diameter* | Mm | 110 | 110 | 110 | 110 | 110 |
| Diámetro amarrar máximo / Max. Clamping diameter* | Mm | 700 | 775 | 875 | 975 | 1075 |

* Estos diámetros han sido calculados con las garras superiores duras estándar fabricadas por TdeG para estos platos.

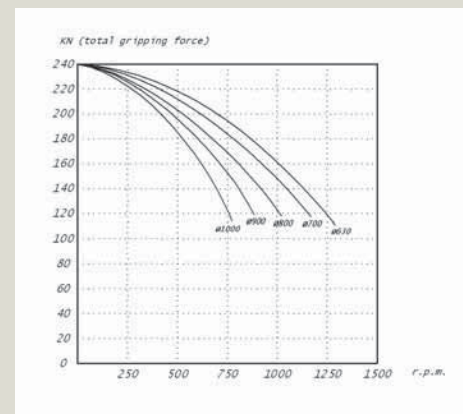
* These diameters have been calculated according to the standard TdeG hard top jaws for each chuck.

* Bajo petición, estos platos pueden ser fabricados con 4 ó 6 garras. Las dimensiones indicadas son de información general.

* Under request, this chucks can be produced with 4 or 6 jaws. (SPB 4G or SPB 6G). Dimensions shown as general information only.

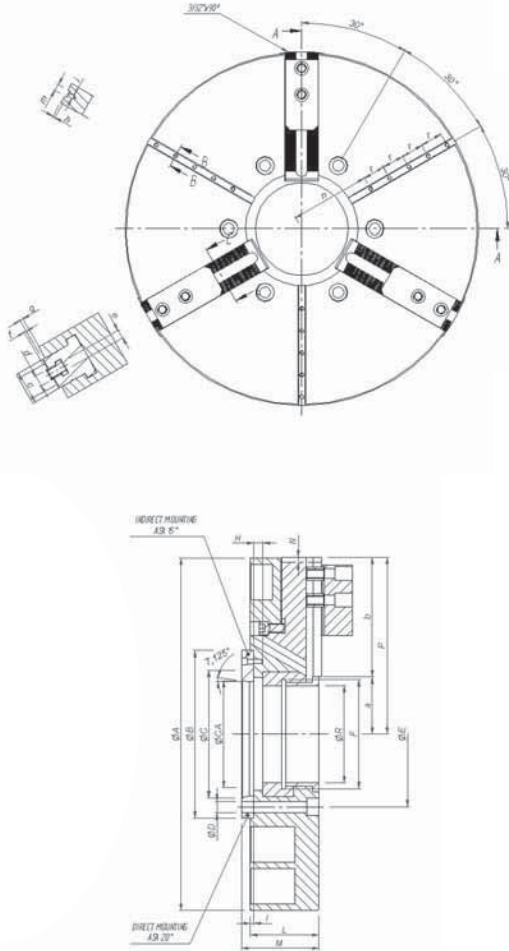
Diagrama de fuerza de
bloqueo dinámica
(total 3 garras)

Gripping force diagram
KN (total gripping force)



Plato automático auto centrante a 3 garras con paso de barra de diámetros 630 – 1000 mm

Open center power chucks 630 – 1000 mm. diameters



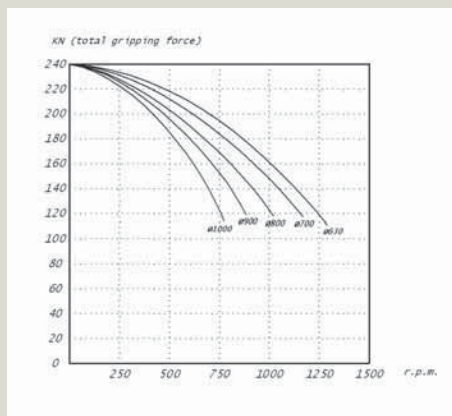
| Modelo CPB 3G | mm | 630 | 700 | 800 | 900 | 1000 |
|--------------------------|----|--------------|--------------|--------------|--------------|--------------|
| A | mm | 630 | 700 | 800 | 900 | 1000 |
| B H6 | mm | 520 | 520 | 520 | 520 | 520 |
| C | mm | 412,77 (20") | 412,77 (20") | 412,77 (20") | 412,77 (20") | 412,77 (20") |
| Ca | mm | 285,77 (15") | 285,77 (15") | 285,77 (15") | 285,77 (15") | 285,77 (15") |
| D | mm | 28 | 28 | 28 | 28 | 28 |
| E | mm | 463,6 | 463,6 | 463,6 | 463,6 | 463,6 |
| F | mm | M 230 x 3 | M 230 x 3 | M 260 x 3 | M 260 x 3 | M 260 x 3 |
| G | mm | 30 | 30 | 30 | 30 | 30 |
| H (Carrera) / H (Stroke) | mm | 38 | 38 | 38 | 38 | 38 |
| I | mm | 8 | 8 | 8 | 8 | 8 |
| L | mm | 165 | 165 | 165 | 178 | 178 |
| M | mm | 190 | 190 | 190 | 203 | 203 |
| N (Carrera) / N (Stroke) | mm | 10 | 10 | 10 | 10 | 10 |
| P | mm | 320 | 355 | 405 | 455 | 505 |
| R | mm | 220 | 220 | 250 | 250 | 250 |
| a | mm | 180 | 180 | 195 | 195 | 195 |
| b | mm | 140 | 175 | 210 | 260 | 310 |
| c | mm | 75 | 75 | 75 | 75 | 75 |
| d h8 | mm | 25,5 | 25,5 | 25,5 | 25,5 | 25,5 |
| e | mm | M 20 | M 20 | M 20 | M 20 | M 20 |
| f | mm | 4 | 4 | 4 | 4 | 4 |
| g | mm | 6 | 6 | 6 | 6 | 6 |
| h | mm | 5 | 5 | 5 | 5 | 5 |
| i | mm | M 10 | M 10 | M 10 | M 10 | M 10 |
| m | mm | 15 | 15 | 15 | 15 | 15 |
| n | mm | 205 | 205 | 205 | 205 | 205 |
| r | mm | 50 | 50 | 50 | 50 | 50 |

Diagrama de fuerza de bloqueo dinámica

Total 3 garras

Gripping force diagram

KN (total gripping force)



Plato auto centrante automático a 3 garras diámetros 630 – 1000 mm con paso de barra y con garras superiores con dentado en pulgadas de 3/32" x 90° o 3" x 60°. Acciona-miento mediante plano inclinado.

Open center power chuck 630 – 1000 mm. diameters. Master jaws with inch serration 3/32" x 90°. Wedge Type.

La fuerza de bloqueo (KN) han sido medidas con unas garras superiores standard sobre la posición máxima externa del auto centrado.

The dynamic gripping forces have been measured using the standard soft top jaws placed in the most external position, but not exceeding the outer diameter of the chuck.

Características técnicas

Technical data

| Diámetro / Diameters | Mm | 630 | 700 | 800 | 900 | 1000 |
|--|-------------------|------|------|------|-----|------|
| Carrera de la garras / Radial jaw stroke | Mm | 10 | 10 | 10 | 10 | 10 |
| Carrera del plano inclinado / Axial wedge stroke | Mm | 38 | 38 | 38 | 38 | 38 |
| Fuerza tracción máxima / Max. draw pull | KN | 100 | 100 | 100 | 100 | 100 |
| Fuerza de amarre máxima / Max. gripping force | KN | 240 | 240 | 240 | 240 | 240 |
| Velocidad máxima / Max. speed | r.p.m. | 1350 | 1220 | 1070 | 950 | 860 |
| Peso / Weight | Kg | 240 | 310 | 400 | 550 | 700 |
| Momento de inercia PD2 / Moment of inertia PD2 | Kg.m ² | 38 | 60 | 102 | 170 | 265 |
| Diámetro amarre mínimo / Min. clamping diameter* | Mm | 265 | 265 | 290 | 290 | 290 |
| Diámetro amarre máximo / Max. Clamping diameter* | Mm | 700 | 775 | 875 | 975 | 1075 |

* Estos diámetros han sido calculados con las garras superiores duras estándar fabricadas por TdeG para estos platos.

* These diameters have been calculated according to the standard TdeG hard top jaws for each chuck.

* Bajo petición, estos platos pueden ser fabricados con 4 ó 6 garras. Las dimensiones indicadas son de información general.

* Under request, this chucks can be produced with 4 or 6 jaws. (CPB 3G or CPB 4C). Dimensions shown as general information only.