

ISO 7388/2 A - DIN 69872

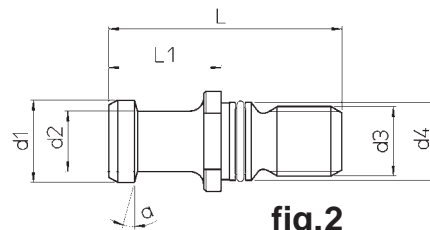
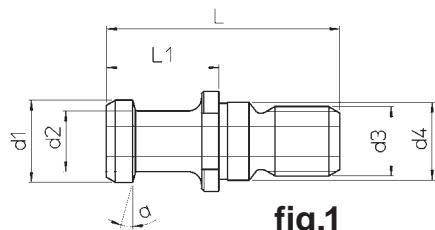


fig.1

fig.2

REF.	CODE	ISO	d ₁	d ₂	d ₃	d ₄	L	L ₁	a	fig.
ISO 7388/2 A DIN 69872	20 143 025 0401	40	19	14	M16	17	54	26	15°	1
	20 143 025 0451	45	23	17	M20	21	65	30		
	20 143 025 0501	50	28	21	M24	25	74	34		
	20 143 025 0400	40	19	14	M16	17	54	26		
	20 143 025 0500	50	28	21	M24	25	74	34	2	

ISO 7388/2 B - ANSI B.5 50

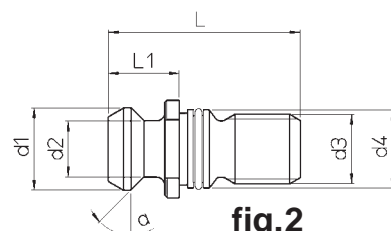
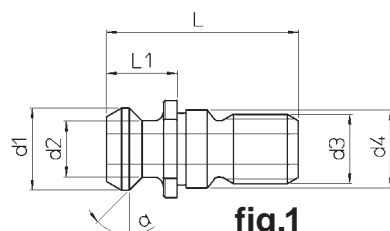
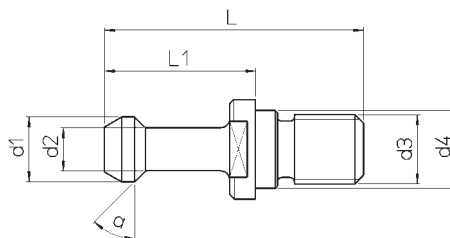


fig.1

fig.2

REF.	CODE	ISO	d ₁	d ₂	d ₃	d ₄	L	L ₁	a	fig.
ISO 7388/2 B ANSI B.5 50	20 143 025 1401	40	18.95	12.95	M16	17	44.50	16.40	45°	1
	20 143 025 1451	45	24.05	16.30	M20	21	56	20.95		
	20 143 025 1501	50	29.10	19.60	M24	25	65.50	25.55		
	20 143 025 1400	40	18.95	12.95	M16	17	44.50	16.40		
	20 143 025 1500	50	29.10	19.60	M24	25	65.50	25.55	2	

MAS 403 BT - 30° - 45°



REF.	CODE	ISO	d ₁	d ₂	d ₃	d ₄	L	L ₁	a
MAS 403 BT 30°	20 143 025 2301	30	11	7	M12	12.5	43	23	30°
	20 143 025 2401	40	15	10	M16	17	60	35	
	20 143 025 2451	45	19	14	M20	21	70	40	
	20 143 025 2501	50	23	17	M24	25	85	45	
MAS 403 BT 45°	20 143 025 2302	30	11	7	M12	12.5	43	23	45°
	20 143 025 2402	40	15	10	M16	17	60	35	
	20 143 025 2452	45	19	14	M20	21	70	40	
	20 143 025 2502	50	23	17	M24	25	85	45	