

AW
DIN 1835 B-E

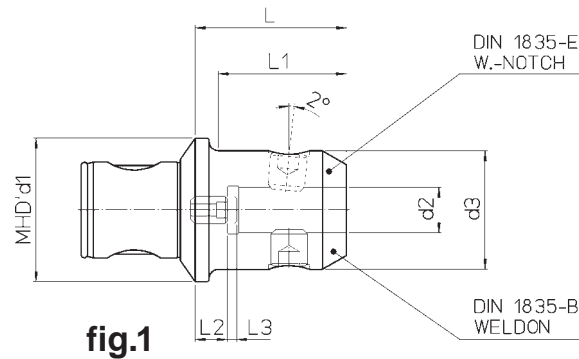


fig.1

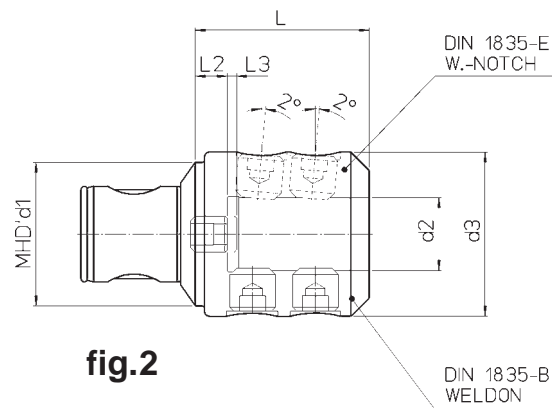


fig.2

REF.	CODE	MHD' d ₁	d ₂ ^{H5}	d ₃	L	L ₁	L ₂	L ₃	kg	fig.
AW 50/6	65 58 050 0006 0	50	6	25	44	32.5	7	2	0.5	1
AW 50/8	65 58 050 0008 0		8	28		33				
AW 50/10	65 58 050 0010 0		10	35	52	42	11	3	0.7	
AW 50/12	65 58 050 0012 0		12	42	57					
AW 50/14	65 58 050 0014 0		14	48	67	61	17	1.1		
AW 50/16	65 58 050 0016 0		16	51					20	
AW 50/20	65 58 050 0020 0		20	63	80	-	22	1.8	2	
AW 50/25	65 58 050 0025 0		25	63	80	-	22	1.8	2	
AW 63/16	65 58 063 0016 0	63	16	48	64	53	14	4	1.4	1
AW 63/20	65 58 063 0020 0		20	52	66	56			1.5	
AW 63/25	65 58 063 0025 0		25	64	74	-	16	2.1		
AW 63/32	65 58 063 0032 0		32	72	76	-	14	2.5	2	
AW 80/40	65 58 080 0040 0	80	40	80	83	-	12	3.2		

Combi-toolholders Weldon (DIN 1835 B) and Whistle Notch (DIN 1835 E) with axial adjustment screw.

Werkzeugaufnahme Weldon (nach DIN 1835-B) und Whistle Notch (nach DIN 1835-E) mit Axialverstellungsschraube.

Adaptadores combinados Weldon (DIN 1835 B) y Whistle Notch (DIN 1835 E) con tornillo de regulación axial.

Adaptateurs combinés Weldon (DIN 1835 B) et Whistle Notch (DIN 1835 E) avec vis de réglage axial.

Adattatori combinati Weldon (DIN 1835 B) e Whistle Notch (DIN 1835 E) con vite di regolazione assiale.

