

Testarossa

Testarossa

Testarossa

Testarossa

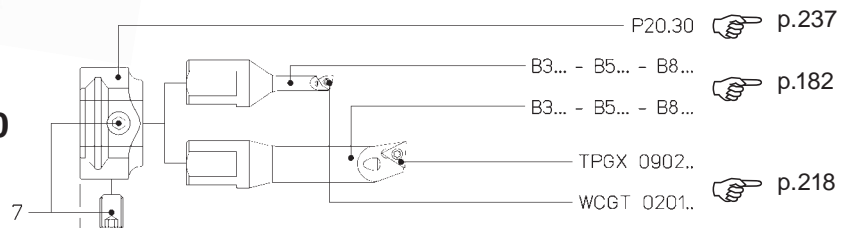
Testarossa



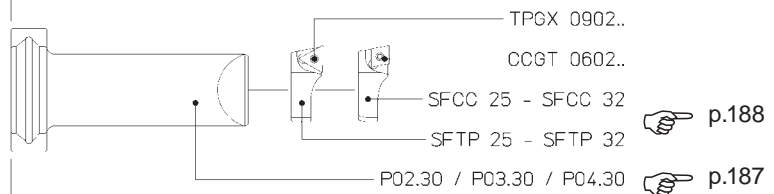
TRM 50/63
TRM 63/63

Ø 6 ~ 125

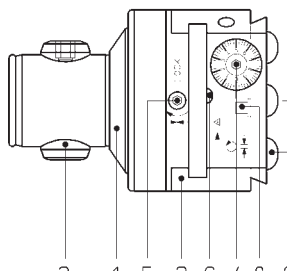
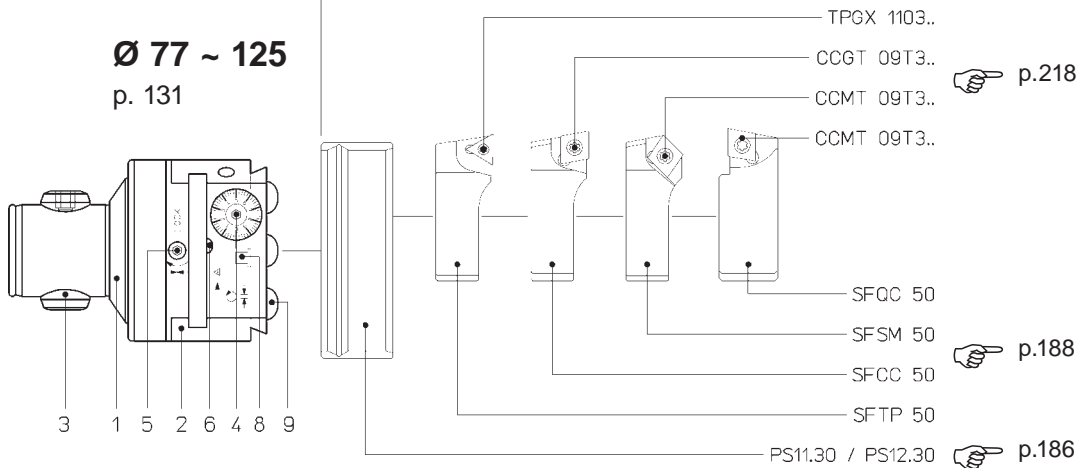
Ø 6 ~ 30
p. 129



Ø 30 ~ 77
p. 130



Ø 77 ~ 125
p. 131



128

COMPONENTS

1. Body
2. Slide toolholder
3. Expanding radial pin
4. Micrometric vernier scale
5. Slide clamp screw
6. Coolant outlet
7. Tool clamp screw
8. Oiler
9. Toolholder lock screw

BAUTEILE

1. Körper
2. Werkzeugschlitten
3. Spreizbolzen
4. Mikrometrischer Nonius
5. Schlittenklemmschraube
6. Kühlmittelaustrittloch
7. Werkzeugklemmschraube
8. Schmiernippel
Bohrstangen.
9. Werkzeughalter-
spannschrauben

COMPONENTES

1. Cuerpo
2. Guía portaherramientas
3. Perno radial expansible
4. Nonio micrométrico
5. Tornillo bloqueo guía
6. Agujero salida refrigerante
7. Tornillo bloqueo
herramientas
8. Engrasador
9. Tornillos bloqueo
portaherramientas

COMPOSANTS

1. Corps
2. Coulisseau
3. Tige radial expansible
4. Vernier micrométrique
5. Vis blocage coulisseau
6. Sortie du liquide d'arrosage
7. Vis blocage outil
8. Graisseur
9. Vis blocage
porte-outils

COMPONENTI

1. Corpo
2. Slitta portautensili
3. Perno radiale espandibile
4. Nonio micrometrico
5. Vite bloccaggio slitta
6. Uscita refrigerante
7. Vite bloccaggio utensili
8. Oliatore
9. Viti bloccaggio
portautensili

p. 260

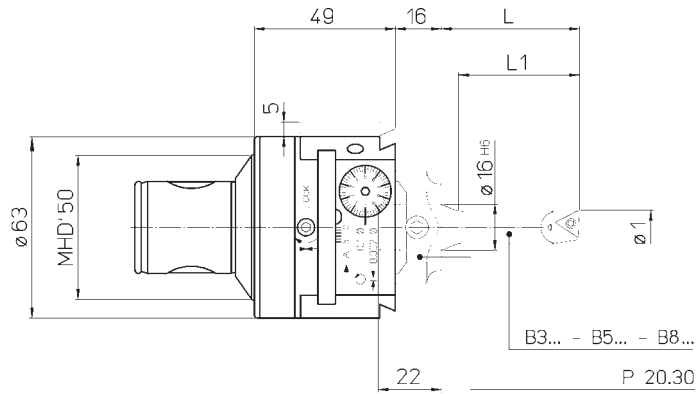
p. 218-219

p. 242



TRM 50/63 TRM 63/63

Ø 6 ~ 30



REF.	CODE	MHD'd ₁	Ø ₁	B...	L	L ₁			kg	
TRM 50/63 TRM 63/63	45 50 050 0063 0 45 50 063 0063 0	50 63	6 ~ 8	B3.06	29	21	•	—	1.1 1.5	
				B5.06	36	—	•	—		
				B8.06	45	—	•	—		
			8 ~ 10	B3.08	36	28	•	—		
				B5.08	48	—	•	—		
				B8.08	60	—	•	—		
			10 ~ 12	B3.10	43	35	—	•		
				B5.10	60	—	—	•		
				B8.10	75	—	—	•		
			11 ~ 13	B3.11	48	40	—	•		
				B3.12	48	42	—	•		
				B5.12	72	—	—	•		
			12 ~ 14	B8.12	90	—	—	•		
				14 ~ 16	B3.14	52	50	—		•
					B5.14	84	—	—		•
			B8.14		105	—	—	•		
			16 ~ 18	B3.16	58	50	—	•		
				B5.16	96	—	—	•		
B8.16	120	—		—	•					
18 ~ 22	B3.18	63	—	—	•					
22 ~ 30	B3.22	68	—	—	•					



129



Testarossa

Testarossa

Testarossa

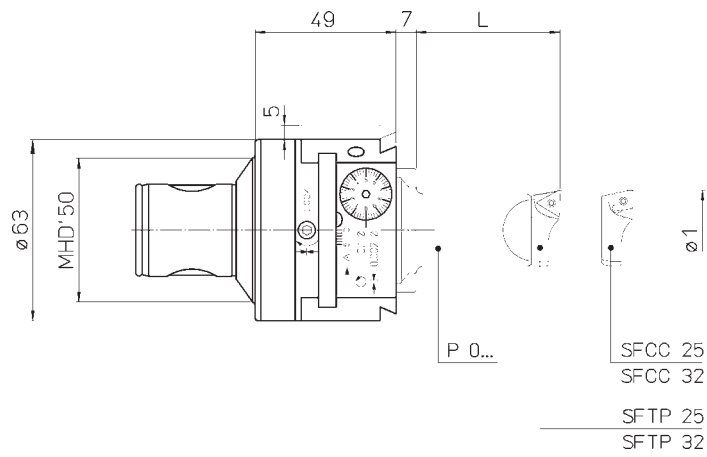
Testarossa

Testarossa

TRM 50/63

TRM 63/63

Ø 30 ~ 77



REF.	CODE	MHD'd ₁	Ø ₁	L	P 0...	SF..			kg
TRM 50/63 TRM 63/63	45 50 050 0063 0 45 50 063 0063 0	50	30 ~ 66	50	P 02.30	SFTP 25 SFCC 25	•	•	1.1
				80	P 03.30				
				125	P 04.30				
		35.5 ~ 77	50	P 02.30	SFTP 32 SFCC 32	•	•	1.5	
			80	P 03.30					
			125	P 04.30					

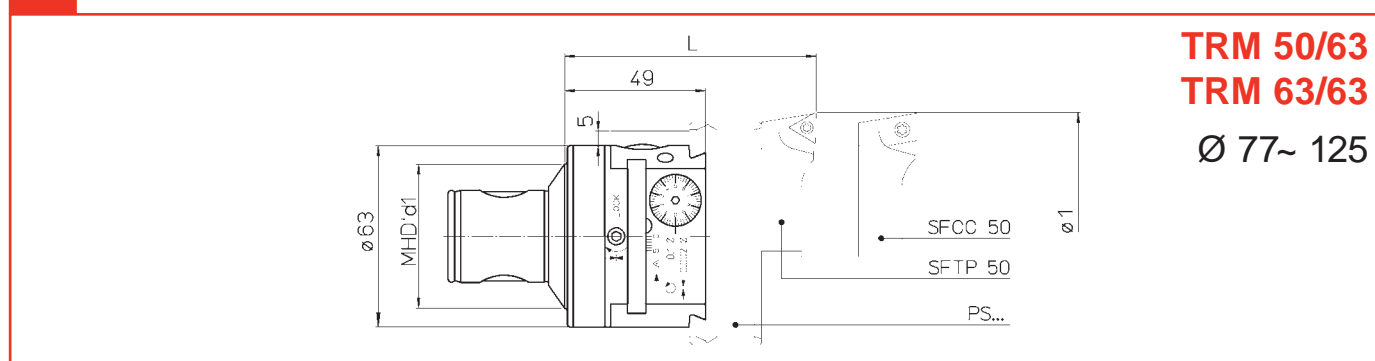
130

p. 260

p. 218-219

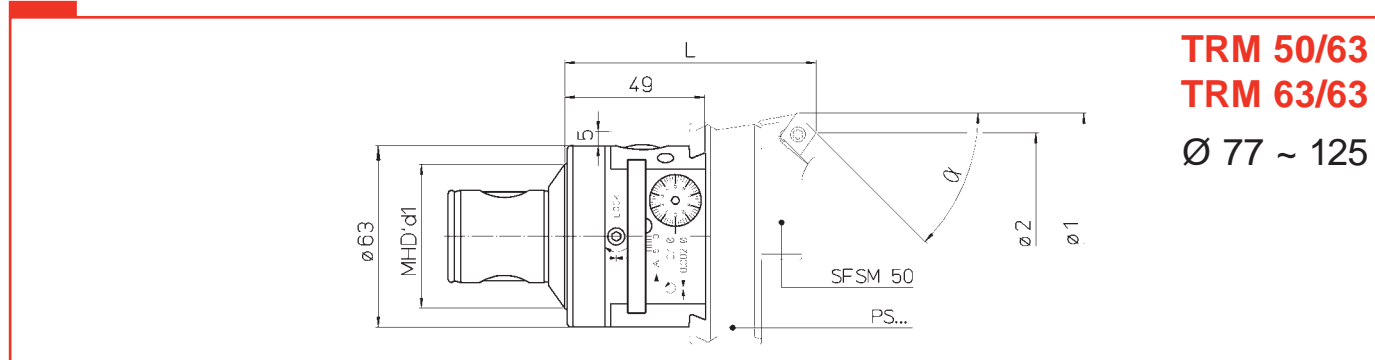
p. 242





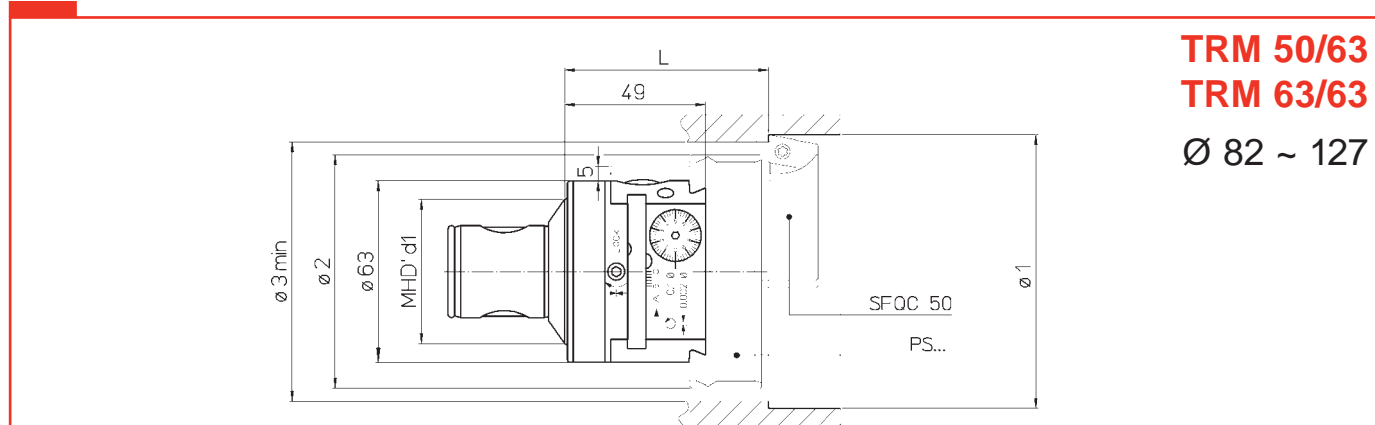
TRM 50/63
TRM 63/63
Ø 77~ 125

REF.	CODE	MHD'd1	Ø1	L	PS..	SF..	△	□	kg
TRM 50/63	45 50 050 0063 0	50	77 ~ 100	87.5	PS 11.30	SFTP 50	•	•	1.1
TRM 63/63	45 50 063 0063 0	63	95 ~ 125		PS 12.30	SFCC 50		•	1.5



TRM 50/63
TRM 63/63
Ø 77 ~ 125

REF.	CODE	MHD'd1	Ø1	Ø2	α	L	PS..	SF5M	□	kg
TRM 50/63 TRM 63/63	45 50 050 0063 0 45 50 063 0063 0	50 63	77 ~ 100 95 ~ 125	72 ~ 95	15°	87.5	PS 11.30 PS 12.30	SF5M 50-15°	•	1.1 1.5
				67 ~ 90	30°			SF5M 50-30°		
				63.5 ~ 86.5	45°			SF5M 50-45°		
				90 ~ 120	15°					
				85.5 ~ 115.5	30°					
				81.5 ~ 111.5	45°					



TRM 50/63
TRM 63/63
Ø 82 ~ 127

$\text{Ø}3 \text{ min} = (\text{Ø}1 + \text{Ø}2 + 1) : 2$

REF.	CODE	MHD'd1	Ø1	Ø2	L	PS..	SFQC	□	kg
TRM 50/63	45 50 050 0063 0	50	82 ~ 102	75	70.5	PS 11.30	SFQC 50	•	1.1
TRM 63/63	45 50 063 0063 0	63	100 ~ 127	93		PS 12.30			

